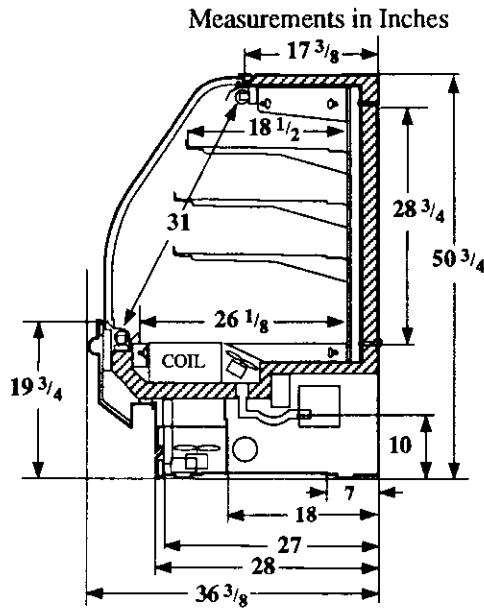


Double Curved Tilt Glass, 4 Display Levels, and Sliding Rear Doors
(Also available as a Self-contained Model.)

Vision NEBBDT
Bakery

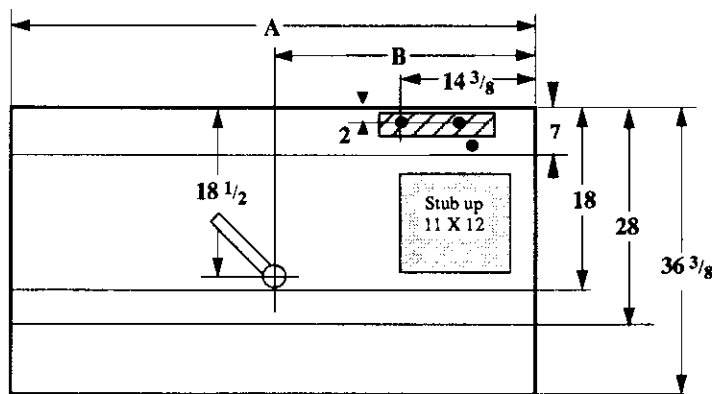
Refrigeration Data

Discharge Air °F	30
Evaporator °F	18
Unit Sizing °F	16
<i>BTU/HR/FOOT</i>	
Parallel	480
Satellite	490
Conventional	500



Defrost Data

Frequency Hrs	12
<i>ELECTRIC</i>	
Temp Term °F	NA
Failsafe Min	NA
<i>REVERSE AIR</i>	
Temp Term °F	NA
Failsafe Min	NA
<i>GAS</i>	
Duration Min	NA
<i>OFFTIME</i>	
Duration Min	40



Electrical Service	Dimension	59" Case	78" Case
Waste Outlet	A	59	78
	B	29 1/2	39

Conventional Controls

Low Pressure Backup Control	
CI/CO (PSIG)	
R-22 34/24	R-502 42/32
Indoor Condenser only, Pressure Defrost Termination (PSIG)	
R-22 82	R-502 96

Physical Data

Merchandise	
Drip Pipe (in.)	3/4
Liquid Line (in.)	3/8
Suction Line (in.)	5/8

Evaporator Estimated Charge		
Length	R-22	R-502
	(lbs)	(lbs)
59"	3.5	4
78"	5	5

Length Added to Lineup by Ends and Partitions

Each End (in.)	1 1/2
Each Regular Partition (in.)	1 1/2

Vision NEBBDT Bakery

Electrical Data

Merchandiser	59In	78In
Number of Fans - Evaporator	2	3
- Ambient	2	3

Merchandiser	Amperes		Watts	
	59In	78In	59In	78In
Fans	1.1	1.6	130	190
Enrg Eff Fans (Reverse Air)	NA			
Constant on Anti-sweat Heaters	NA			
Cycling Anti-sweat Heaters	3.7	5.0	444	600
Min. Circuit Ampacity	5	6.8		
With Enrg Eff Fans (Reverse Air)	NA			
Max. Over Current Protection	15	15		
Supplemental Gas Heaters	NA			
208V 1Φ Electric Defrost	NA			
120V 1Φ Supplemental Rev. Air	NA			
Self-contained Only				
Fans, Anti-sweat Htr, Evaporator Pan Htr and Condensing Unit	13.4	17.3	1600	2075
Standard Lighting				
1 Row Canopy, Interior Front Ledge Light				
Advance	0.75	1.50	90	180
Valmont (GE)	0.80	1.60	88	176
3 Rows Shelf				
Valmont (GE)	0.99	1.41	120	159
Robertson	0.99	0.99	No Listing	No Listing

Revised 12-15-93