

Double Curved Fixed Glass, 2 Display Levels (including Mezzanine Shelf), Gravity Coil, Rear Sliding Doors



Refrigeration Data

Discharge Temp °F	24
Evaporator °F	21
Unit Sizing °F	19
<i>BTU/HR/FOOT</i>	
Parallel	422
Satellite	434
Conventional	445

Defrost Data

Frequency Hrs	24
<i>ELECTRIC</i>	
Temp Term °F	NA
Failsafe Min	NA
<i>REVERSE AIR</i>	
Temp Term °F	NA
Failsafe Min	NA
<i>GAS</i>	
Duration Min	NA
<i>OFFTIME</i>	
Duration Min	90

Conventional Controls

Low Pressure Backup Control	
CI/CO (PSIG)	
R-22 37/27	R-502 45/35
Indoor Condenser only, Pressure Defrost Termination (PSIG)	
R-22 76	R-502 89

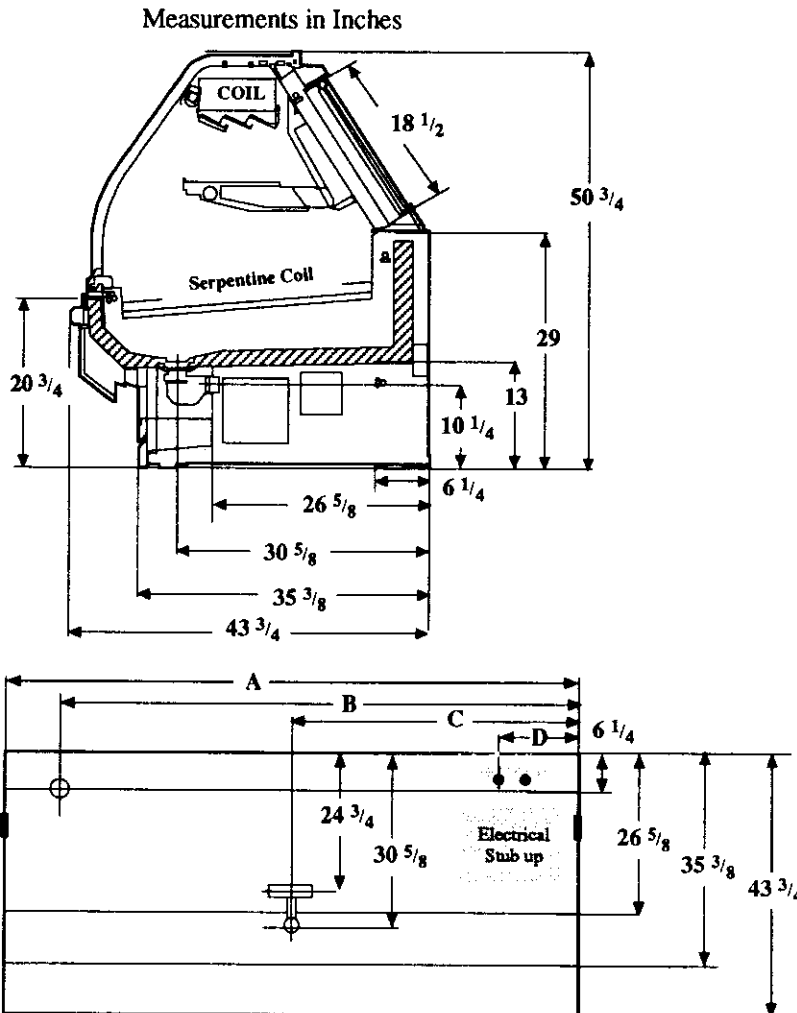
Physical Data

Merchandise	
Drip Pipe (in.)	1 1/2
Liquid Line (in.)	3/8
Suction Line (in.)	7/8

Evaporator Estimated Charge		
Length	R-22	R-502
	(lbs)	(lbs)
8'	15	15
12'	22	22

Length Added to Lineup by Ends and Partitions

Each End (in.)	1 1/2
Each Partition (in.)	1 1/2



Electrical Service	Dimension	8' Case	12' Case
Waste Outlet	A	96 1/4	144 3/8
Refrigeration Outlet	B	84 1/4	138 3/8
Passageway Port	C	48 1/8	72 1/4
	D	8 1/2	8 1/2

Revised 12-15-93

Vision NEGDF Delicatessen
--

Electrical Data

Merchandiser	8Ft	12Ft
Number of Fans - Ambient	NA	

Merchandiser	Amperes		Watts	
	8Ft	12Ft	8Ft	12Ft
Fans	NA			
Enrg Eff Fans (Reverse Air)	NA			
Constant on Anti-sweat Heaters	NA			
Cycling Anti-sweat Heaters	NA			
Supplemental Gas Heaters	NA			
Min. Circuit Ampacity	NA			
With Enrg Eff Fans (Reverse Air)	NA			
Max. Over Current Protection	20	20		
208V Electric Defrost	NA			
Supplemental Rev. Air	NA			

Standard Lighting*

2 Rows Interior	[2.8]	[4.2]		
Valmont (GE)	2.12	3.21	150	255

*[] = Serial Plate Amperage includes wire harness for 1 row of lighted mezzanine shelves.