

Double Curved Hinged Glass, Single Display Level
Gravity Coil, Rear Sliding Doors

Vision NEG DHS
Seafood

Refrigeration Data

Discharge Temp °F	24
Evaporator °F	21
Unit Sizing °F	19
<i>BTU/HR/FOOT</i>	
Parallel	422
Satellite	434
Conventional	445

Defrost Data

Frequency Hrs	24
<i>ELECTRIC</i>	
Temp Term °F	NA
Failsafe Min	NA
<i>REVERSE AIR</i>	
Temp Term °F	NA
Failsafe Min	NA
<i>GAS</i>	
Duration Min	NA
<i>OFFTIME</i>	
Duration Min	90

Conventional Controls

Low Pressure Backup Control	
CI/CO (PSIG)	
R-22 37/27	R-502 45/35
Indoor Condenser only, Pressure Defrost Termination (PSIG)	
R-22 76	R-502 89

Physical Data

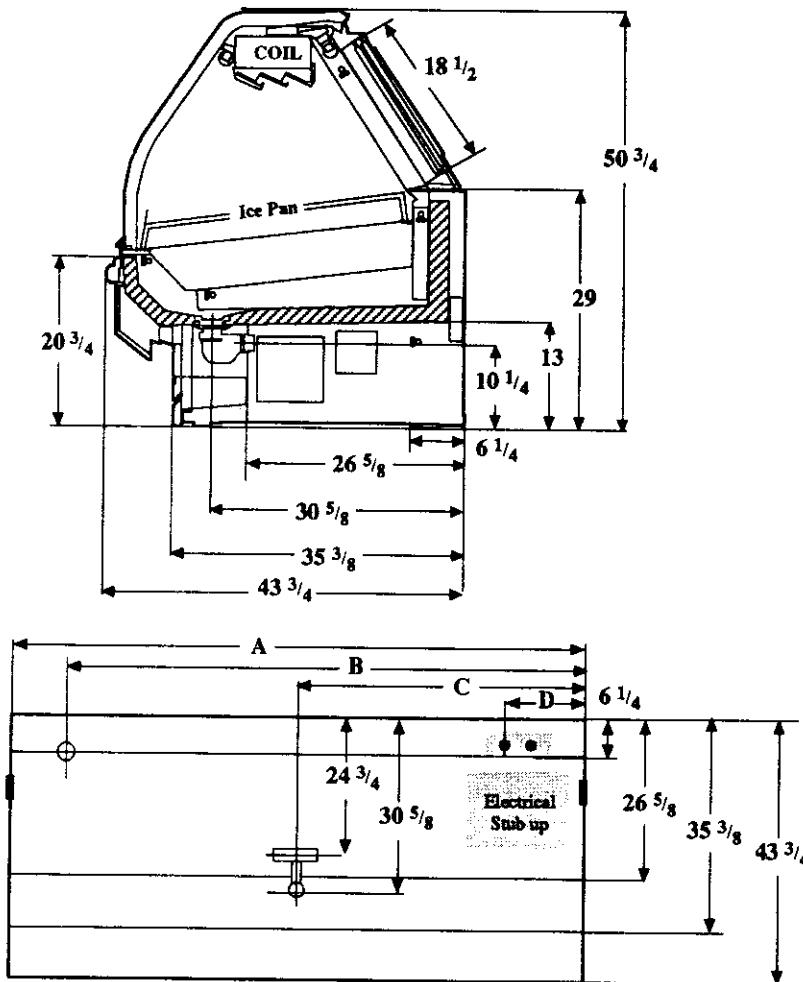
Merchandiser	
Drip Pipe (in.)	1 1/2
Liquid Line (in.)	3/8
Suction Line (in.)	5/8

Evaporator Estimated Charge		
Length	R-22	R-502
	(lbs)	(lbs)
8'	15	15
12'	22	22

Length Added to Lineup by Ends and Partitions

Each End (in.)	1 1/2
Each Insulated Partition (in.)	1 1/2

Measurements in Inches



	Electrical Service	Dimension	8' Case	12' Case
	Waste Outlet	A	96 1/4	144 3/8
	Refrigeration Outlet	B	84 1/4	138 3/8
	Passageway Port	C	48 1/8	72 1/4
		D	8 1/2	8 1/2

Revised 12-15-93

Vision NEGDHS Seafood
--

Electrical Data

Merchandise	8Ft	12Ft
Number of Fans - Induction	NA	

Merchandise	Amperes		Watts	
	8Ft	12Ft	8Ft	12Ft
Fans Enrg Eff Standard	NA			
Constant on Anti-sweat Heaters	NA			
Cycling Anti-sweat Heaters	NA			
Supplemental Gas Heaters	NA			
Min. Circuit Ampacity	NA			
Max. Over Current Protection	20	20		
208V 1Φ Electric Defrost	NA			
120V 1Φ Supplemental Rev. Air	NA			

Standard Lighting*

2 Rows Canopy				
Magnatec/Universal	1.00	1.40	104	152

Revised 12-15-93