

Double Curved Hinged Glass, 3 Display Levels (including Mezzanine Shelves), Gravity Coil, Induction Fan and Coil for Bottom Level, Rear Sliding Doors

Vision **NEGDH**
Delicatessen

Refrigeration Data

| | |
|--------------------|-----|
| Discharge Temp °F | 24 |
| Evaporator °F | 21 |
| Unit Sizing °F | 19 |
| <i>BTU/HR/FOOT</i> | |
| Parallel | 422 |
| Satellite | 434 |
| Conventional | 445 |

Defrost Data

| | |
|--------------------|----|
| Frequency Hrs | 24 |
| <i>ELECTRIC</i> | |
| Temp Term °F | NA |
| Failsafe Min | NA |
| <i>REVERSE AIR</i> | |
| Temp Term °F | NA |
| Failsafe Min | NA |
| <i>GAS</i> | |
| Duration Min | NA |
| <i>OFFTIME</i> | |
| Duration Min | 90 |

Conventional Controls

| | |
|--|-------------|
| Low Pressure Backup Control | |
| C/CO (PSIG) | |
| R-22 37/27 | R-502 45/35 |
| Indoor Condenser only, Pressure Defrost Termination (PSIG) | |
| R-22 76 | R-502 89 |

Physical Data

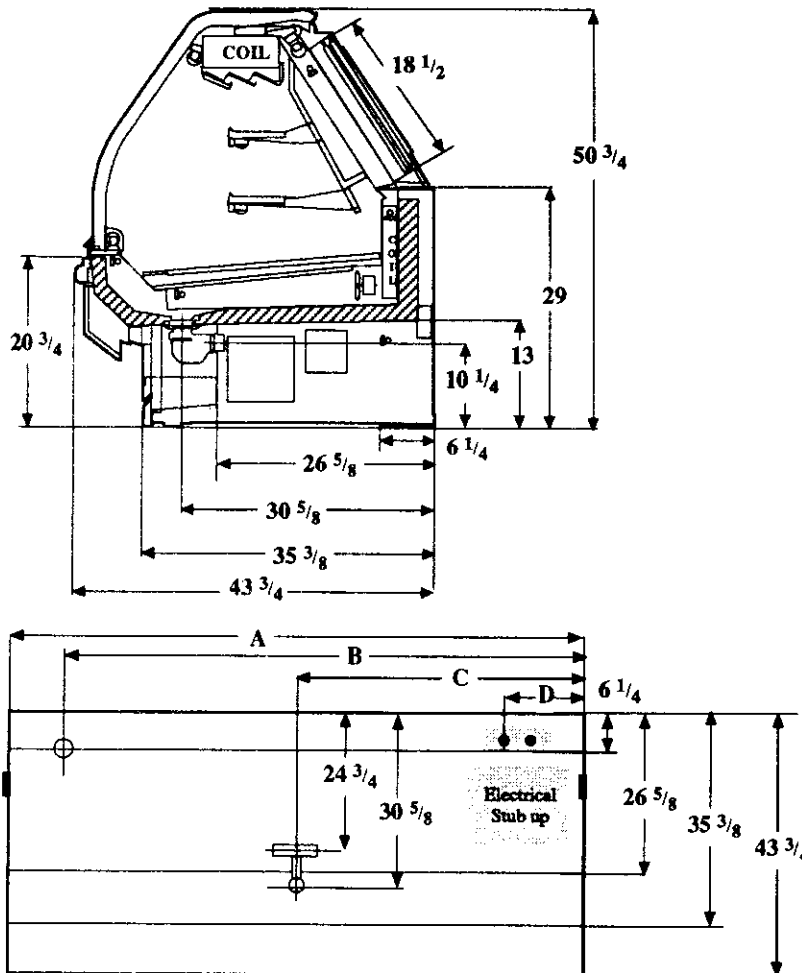
| | |
|--------------------|-------|
| Merchandise | |
| Drip Pipe (in.) | 1 1/2 |
| Liquid Line (in.) | 3/8 |
| Suction Line (in.) | 5/8 |

| | | |
|------------------------------------|------------|-------------|
| Evaporator Estimated Charge | | |
| Length | R-22 (lbs) | R-502 (lbs) |
| 8' | 15 | 15 |
| 12' | 22 | 22 |

Length Added to Lineup by Ends and Partitions

| | |
|--------------------------------|-------|
| Each End (in.) | 1 1/2 |
| Each Insulated Partition (in.) | 1 1/2 |

Measurements in Inches



| | | | |
|----------------------|-----------|---------|----------|
| Electrical Service | Dimension | 8' Case | 12' Case |
| Waste Outlet | A | 96 1/4 | 144 3/8 |
| Refrigeration Outlet | B | 84 1/4 | 138 3/8 |
| Passageway Port | C | 48 1/8 | 72 1/4 |
| | D | 8 1/2 | 8 1/2 |

Revised 12-15-93

| |
|--|
| Vision NEGDH Delicatessen |
|--|

Electrical Data

| | | |
|----------------------------|------------|-------------|
| Merchandiser | 8Ft | 12Ft |
| Number of Fans - Induction | 2 | 3 |

| Merchandiser | Amperes | | Watts | |
|--------------------------------|----------------|-------------|--------------|-------------|
| | 8Ft | 12Ft | 8Ft | 12Ft |
| Fans Enrg Eff Standard | 0.2 | 0.2 | 20 | 30 |
| Constant on Anti-sweat Heaters | NA | | | |
| Cycling Anti-sweat Heaters | NA | | | |
| Supplemental Gas Heaters | NA | | | |
| Min. Circuit Ampacity | NA | | | |
| Max. Over Current Protection | 20 | 20 | | |
| 208V 1Φ Electric Defrost | NA | | | |
| 120V 1Φ Supplemental Rev. Air | NA | | | |

Standard Lighting*

| | | | | |
|----------------------------|-------|-------|-----|-----|
| 2 Rows Canopy, 1 Row Ledge | [3.0] | [4.2] | | |
| Advance | 1.71 | 2.25 | 192 | 261 |
| Valmont (GE) | 1.77 | 2.16 | 204 | 258 |
| Magnatec/Universal | 1.68 | 2.42 | 172 | 246 |

*[] = Serial Plate Amperage includes wire harness for 2 rows of lighted mezzanine shelves.