

Double Curved Tilt Glass, 2 Display Levels (including Mezzanine Shelf),  
Gravity Coil, Rear Sliding Doors

**Vision NEGDT**  
**Delicatessen**

**Refrigeration Data**

Discharge Temp °F	24
Evaporator °F	21
Unit Sizing °F	19
<i>BTU/HR/FOOT</i>	
Parallel	422
Satellite	434
Conventional	445

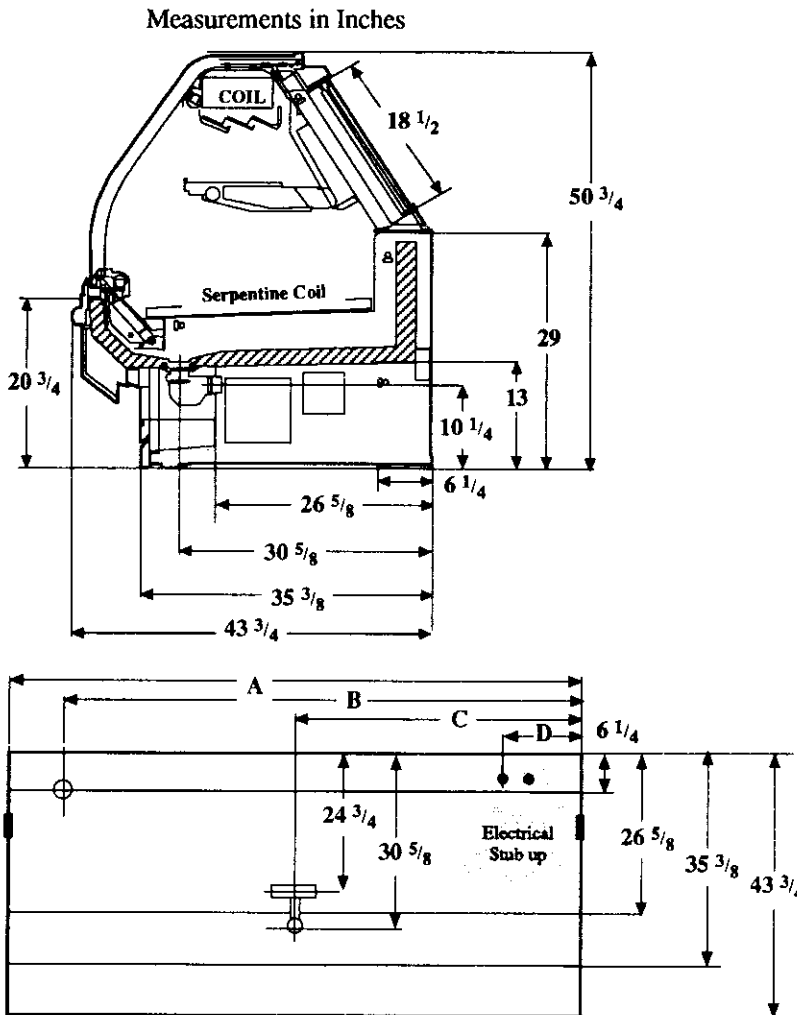
**Defrost Data**

Frequency Hrs	24
<i>ELECTRIC</i>	
Temp Term °F	NA
Failsafe Min	NA
<i>REVERSE AIR</i>	
Temp Term °F	NA
Failsafe Min	NA
<i>GAS</i>	
Duration Min	NA
<i>OFFTIME</i>	
Duration Min	90

**Conventional Controls**

Low Pressure Backup Control  
C/CO (PSIG)  
R-22 37/27      R-502 45/35

Indoor Condenser only, Pressure  
Defrost Termination (PSIG)  
R-22 76      R-502 89



Electrical Service	Dimension	8' Case	12' Case
○ Waste Outlet	A	96 1/4	144 3/8
○ Refrigeration Outlet	B	84 1/4	138 3/8
▮ Passageway Port	C	48 1/8	72 1/4
	D	8 1/2	8 1/2

Revised 12-15-93

**Physical Data**

<b>Merchandiser</b>	
Drip Pipe (in.)	1 1/2
Liquid Line (in.)	3/8
Suction Line (in.)	7/8

<b>Evaporator Estimated Charge</b>		
Length	R-22	R-502
	(lbs)	(lbs)
8'	15	15
12'	22	22

**Length Added to Lineup by  
Ends and Partitions**

Each End (in.)	1 1/2
Each Partition (in.)	1 1/2

<b>Vision NEGDT</b> <b>Delicatessen</b>
--

**Electrical Data**

<b>Merchandiser</b>	<b>8Ft</b>	<b>12Ft</b>
Number of Fans - Ambient	NA	

<b>Merchandiser</b>	<b>Amperes</b>		<b>Watts</b>	
	<b>8Ft</b>	<b>12Ft</b>	<b>8Ft</b>	<b>12Ft</b>
Fans	NA			
Enrg Eff Fans (Reverse Air)	NA			
Constant on Anti-sweat Heaters	NA			
Cycling Anti-sweat Heaters	NA			
Supplemental Gas Heaters	NA			
Min. Circuit Ampacity	NA			
With Enrg Eff Fans (Reverse Air)	NA			
Max. Over Current Protection	20	20		
<b>208V 1Φ Electric Defrost</b>	NA			
<b>208V 1Φ Supplemental Rev. Air</b>	NA			

**Standard Lighting\***

2 Rows Canopy, 1 Row Ledge	[3.5]	[5.3]		
Valmont (GE)	2.85	4.31	256	389

\*[ ] = Serial Plate Amperage includes wire harness for 1 row of lighted mezzanine shelves.