

Double Curved Tilt Glass, 2 Display Levels (including Mezzanine Shelf), Gravity Coil, Rear Sliding Doors



**Refrigeration Data**

Discharge Temp °F	24
Evaporator °F	21
Unit Sizing °F	19
<i>BTU/HR/FOOT</i>	
Parallel	422
Satellite	434
Conventional	445

**Defrost Data**

Frequency Hrs	24
<i>ELECTRIC</i>	
Temp Term °F	NA
Failsafe Min	NA
<i>REVERSE AIR</i>	
Temp Term °F	NA
Failsafe Min	NA
<i>GAS</i>	
Duration Min	NA
<i>OFFTIME</i>	
Duration Min	90

**Conventional Controls**

Low Pressure Backup Control	
CI/CO (PSIG)	
R-22 37/27	R-502 45/35
Indoor Condenser only, Pressure Defrost Termination (PSIG)	
R-22 76	R-502 89

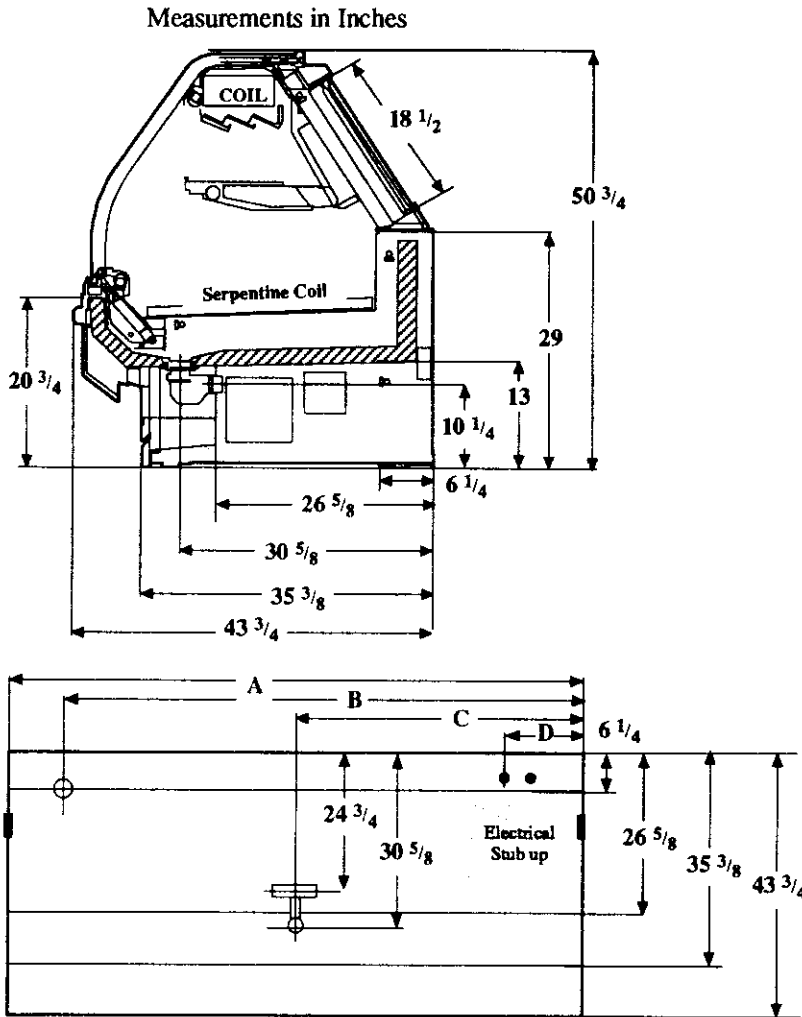
**Physical Data**

Merchandise	
Drip Pipe (in.)	1 1/2
Liquid Line (in.)	3/8
Suction Line (in.)	5/8

<b>Evaporator Estimated Charge</b>		
Length	R-22	R-502
	(lbs)	(lbs)
8'	15	15
12'	22	22

**Length Added to Lineup by Ends and Partitions**

Each End (in.)	1 1/2
Each Insulated Partition (in.)	1 1/2



Electrical Service	Dimension	8' Case	12' Case
Waste Outlet	A	96 1/4	144 3/8
Refrigeration Outlet	B	84 1/4	138 3/8
Passageway Port	C	48 1/8	72 1/4
	D	8 1/2	8 1/2

Revised 12-15-93

<b>Vision NEGDT</b> <b>Meat</b>
------------------------------------

**Electrical Data**

<b>Merchandise</b>	<b>8Ft</b>	<b>12Ft</b>
Number of Fans - Ambient	NA	

<b>Merchandise</b>	<b>Amperes</b>		<b>Watts</b>	
	<b>8Ft</b>	<b>12Ft</b>	<b>8Ft</b>	<b>12Ft</b>
Fans	NA			
Enrg Eff Fans (Reverse Air)	NA			
Constant on Anti-sweat Heaters	NA			
Cycling Anti-sweat Heaters	NA			
Supplemental Gas Heaters	NA			
Min. Circuit Ampacity	NA			
With Enrg Eff Fans (Reverse Air)	NA			
Max. Over Current Protection	20	20		
<b>208V 1Φ Electric Defrost</b>	NA			
<b>120V 1Φ Supplemental Rev. Air</b>	NA			

**Standard Lighting\***

2 Rows Canopy, 1 Row Ledge	[3.5]	[5.3]		
Valmont (GE)	2.85	4.31	256	389

\*[ ] = Serial Plate Amperage includes wire harness for 1 row of lighted mezzanine shelves.

Revised 06-15-93