

Single Curved Fixed Glass, Single Display Level,
Gravity Coil, Rear Sliding Doors

Vision **NEGSF**
Seafood

Refrigeration Data

Discharge Temp °F	24
Evaporator °F	21
Unit Sizing °F	19
<i>BTU/HR/FOOT</i>	
Parallel	422
Satellite	434
Conventional	445

Defrost Data

Frequency Hrs	24
<i>ELECTRIC</i>	
Temp Term °F	NA
Failsafe Min	NA
<i>REVERSE AIR</i>	
Temp Term °F	NA
Failsafe Min	NA
<i>GAS</i>	
Duration Min	NA
<i>OFFTIME</i>	
Duration Min	90

Conventional Controls

Low Pressure Backup Control	
C1/CO (PSIG)	
R-22 37/27	R-502 45/35
Indoor Condenser only, Pressure	
Defrost Termination (PSIG)	
R-22 76	R-502 89

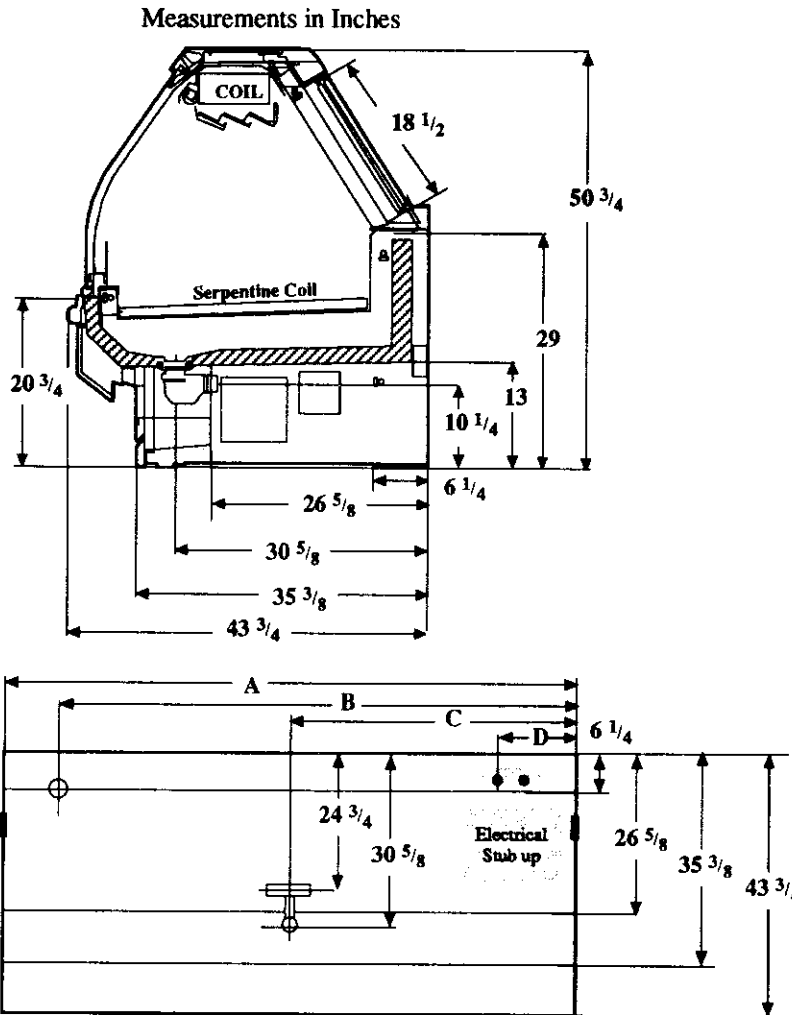
Physical Data





Merchandise	
Drip Pipe (in.)	1 1/2
Liquid Line (in.)	3/8
Suction Line (in.)	5/8

Evaporator Estimated Charge		
Length	R-22	R-502
	(lbs)	(lbs)
8'	17	17
12'	25	25

**Length Added to Lineup by
Ends and Partitions**

Each End (in.)	1 1/2
Each Partition (in.)	1 1/2



 Electrical Service	Dimension	8' Case	12' Case
 Waste Outlet	A	96 1/4	144 3/8
 Refrigeration Outlet	B	84 1/4	138 3/8
 Passageway Port	C	48 1/8	72 1/4
Revised 12-15-93	D	8 1/2	8 1/2

Vision NEGSF Seafood

Electrical Data

Merchandiser	8Ft	12Ft
Number of Fans -	NA	

Merchandiser	Amperes		Watts	
	8Ft	12Ft	8Ft	12Ft
Fans	NA			
Enrg Eff Fans (Reverse Air)	NA			
Constant on Anti-sweat Heaters	NA			
Cycling Anti-sweat Heaters	NA			
Supplemental Gas Heaters	NA			
Min. Circuit Ampacity	NA			
With Enrg Eff Fans (Reverse Air)	NA			
Max. Over Current Protection	20	20		
208V 1Φ Electric Defrost	NA			
120V 1Φ Supplemental Rev. Air	NA			

Standard Lighting

2 Rows Interior				
Valmont (GE)	2.12	3.21	150	255