

Double Curved Hinged Glass, Single Display Level,
Gravity Coil, Rear Sliding Doors

Vision **NESGDH**
Seafood

Refrigeration Data

Discharge Temp °F	26
Evaporator °F	24
Unit Sizing °F	22

BTU/HR/FOOT

	Standard Gravity Only	Optional Serpentine Added
Parallel	218	365
Satellite	224	375
Conventional	230	385

Defrost Data

Frequency Hrs	24
---------------	----

ELECTRIC

Temp Term °F	NA
Failsafe Min	NA

REVERSE AIR

Temp Term °F	NA
Failsafe Min	NA

GAS

Duration Min	NA
--------------	----

OFFTIME

Duration Min	90
--------------	----

Conventional Controls

Low Pressure Backup Control
CI/CO (PSIG)

R-22 40/30	R-502 49/39
------------	-------------

Indoor Condenser only, Pressure Defrost Termination (PSIG)

R-22 76	R-502 89
---------	----------

Physical Data

Merchandise

Drip Pipe (in.)	1 1/2
Liquid Line (in.)	3/8
Suction Line (in.)	5/8

Evaporator Estimated Charge*

Length	R-22 (lbs)	R-502 (lbs)
8'	10	10
12'	14	14

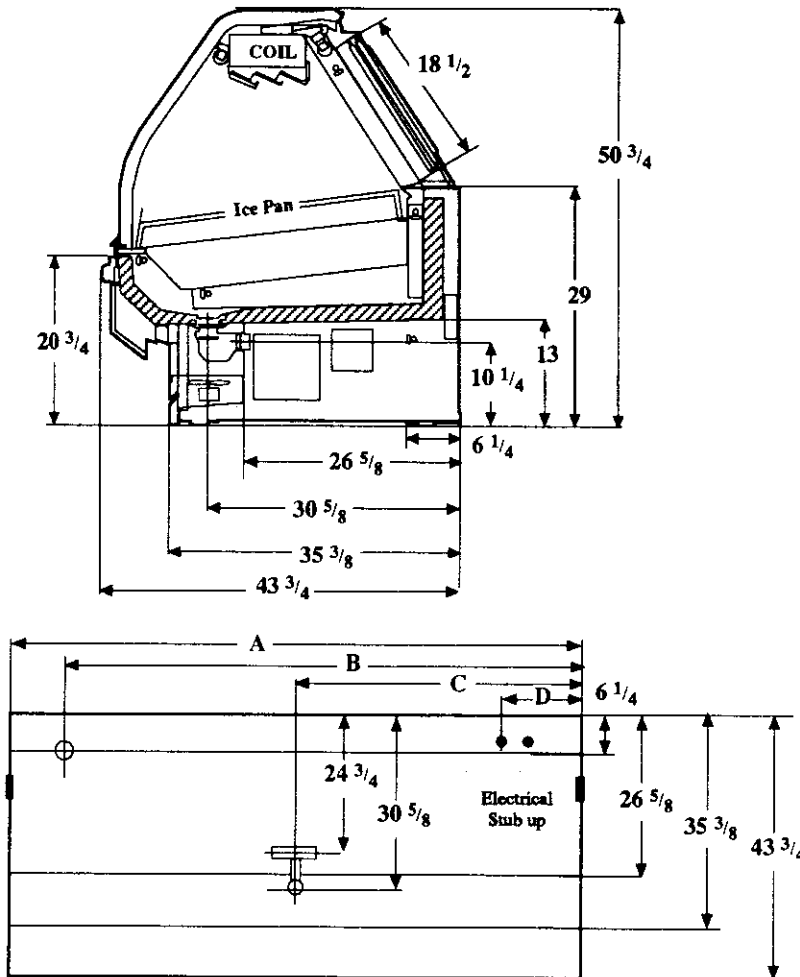
*Includes Serpentine Coil

Length Added to Lineup by
Ends and Partitions

Each End (in.) 1 1/2

Each Partition (in.) 1 1/2

Measurements in Inches



Electrical Service	Dimension	8' Case	12' Case
Waste Outlet	A	96 1/4	144 3/8
Refrigeration Outlet	B	84 1/4	138 3/8
Passageway Port	C	48 1/8	72 1/4
	D	8 1/2	8 1/2

Revised 12-15-93

Vision NESGDH Seafood
--

Electrical Data

Merchandise	8Ft	12Ft
Number of Fans - Ambient	2	3

Merchandise	Amperes		Watts	
	8Ft	12Ft	8Ft	12Ft
Fans	1.26	1.89	102	153
Enrg Eff Fans (Reverse Air)	NA			
Constant on Anti-sweat Heaters	NA			
Cycling Anti-sweat Heaters	NA			
Supplemental Gas Heaters	NA			
Min. Circuit Ampacity	1.46	2.09		
With Enrg Eff Fans (Reverse Air)	NA			
Max. Over Current Protection	20	20		
208V 1Φ Electric Defrost	NA			
120V 1Φ Supplemental Rev. Air	NA			

Standard Lighting

2 Rows Interior Valmont (GE)	2.12	3.21	150	255
---------------------------------	------	------	-----	-----

Revised 12-15-93

HUSSMANN CORPORATION • BRIDGETON, MO 63044