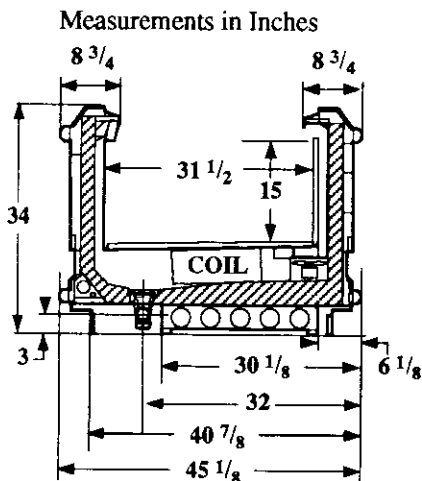


Single Level Narrow Island Display

Vision NF1N
Frozen Food

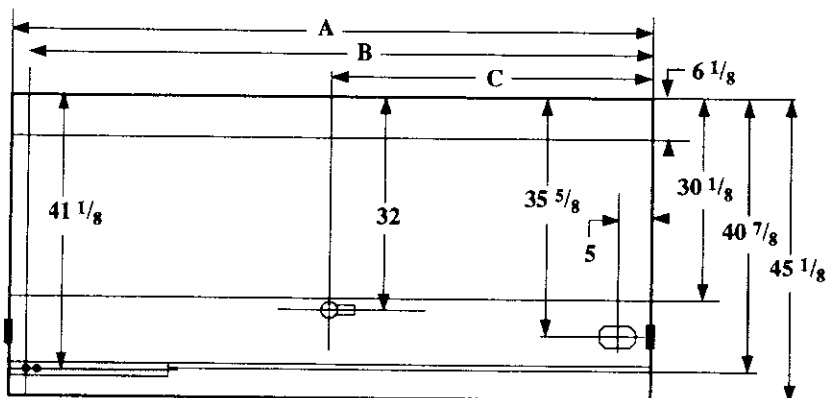
Refrigeration Data

| | |
|--------------------|-------------|
| Discharge Air °F | -10 |
| Evaporator °F | -20 |
| Unit Sizing °F | -23 |
| <i>BTU/HR/FOOT</i> | |
| Parallel | 275 |
| Satellite | Not Applied |
| Conventional | 315 |



Defrost Data

| | |
|--------------------|----|
| Frequency Hrs | 24 |
| <i>ELECTRIC</i> | |
| Temp Term °F | 52 |
| Failsafe Min | 60 |
| <i>REVERSE AIR</i> | |
| Temp Term °F | 48 |
| Failsafe Min | 90 |
| <i>GAS</i> | |
| Duration Min | 20 |
| <i>OFFTIME</i> | |
| Duration Min | NA |



| | | | |
|---|------------------|----------------|-----------------|
| <ul style="list-style-type: none"> ●●● Electrical Service ○ Waste Outlet ○ Refrigeration Outlet ┆ Passageway Port | Dimension | 8' Case | 12' Case |
| | A | 96 1/4 | 144 3/8 |
| | B | 93 5/8 | 141 3/4 |
| | C | 48 1/8 | 72 1/4 |

Conventional Controls

| | |
|---|------------|
| Low Pressure Backup Control | |
| CI/CO (PSIG) | |
| R-22 7/0 | R-502 11/0 |
| Indoor Condenser only, Pressure Defrost Termination (PSIG) | |
| R-22 NA | R-502 NA |

Physical Data

| | | |
|------------------------------------|------------|-------------|
| Merchandiser | | |
| Drip Pipe (ins) | | 1 1/2 |
| Liquid Line (ins) | | 3/8 |
| Suction Line (ins) | | 7/8 |
| Evaporator Estimated Charge | | |
| Length | R-22 (lbs) | R-502 (lbs) |
| 8 | 17 | 13 |
| 12 | 21 | 19 |

| | |
|--|-------|
| Length Added to Lineup by Ends and Partitions | |
| Each End (ins) | 1 1/2 |
| Each Insulated Partition (ins) | |
| | 1 1/2 |

| |
|--|
| Vision NF1N Frozen Food |
|--|

Electrical Data

Merchandiser

Number of Fans - Evaporator

| | |
|------------|-------------|
| 8Ft | 12Ft |
| 2 | 3 |

Merchandiser

Fans

Standard
 Energy Efficient
 Reverse Air
 Constant on Anti-sweat Heaters

| Amperes | |
|----------------|-------------|
| 8Ft | 12Ft |
| 1.20 | 1.80 |
| 0.40 | 0.60 |
| 0.62 | 0.93 |
| 0.70 | 1.00 |

| Watts | |
|--------------|-------------|
| 8Ft | 12Ft |
| 80 | 120 |
| 40 | 60 |
| 60 | 90 |
| 84 | 120 |

Cycling Anti-sweat Heaters

NA

Min. Circuit Ampacity

With Standard Fans
 With Energy Efficient Fans
 With Reverse Air Fans

| | |
|------|------|
| 2.10 | 3.00 |
| 1.30 | 1.80 |
| 1.52 | 2.13 |

Max. Over Current Protection

| | |
|----|----|
| 20 | 20 |
|----|----|

Supplemental Gas Heaters

| | |
|-----|-----|
| 0.2 | 0.2 |
|-----|-----|

| | |
|----|----|
| 25 | 25 |
|----|----|

208V 1Φ Electric Defrost

| | |
|-----|------|
| 8.2 | 12.1 |
|-----|------|

| | |
|------|------|
| 1706 | 2517 |
|------|------|

120V 1Φ Supplemental Rev. Air

| | |
|-----|-----|
| 6.8 | 9.9 |
|-----|-----|

| | |
|-----|------|
| 816 | 1188 |
|-----|------|

Standard Lighting

None

Revised 12-15-93