

Single Level Narrow Island Display

Vision NF1N
Meat

Refrigeration Data

Discharge Air °F	20	22	*24
Evaporator °F	14	16	18
Unit Sizing °F	12	14	16
<i>BTU/HR/FOOT</i>			
Parallel	255	250	240
Satellite	260	255	245
Conventional	270	260	255

* Hussmann recommends.

Defrost Data

Frequency Hrs	24
<i>ELECTRIC</i>	
Temp Term °F	52
Failsafe Min	60
<i>REVERSE AIR</i>	
Temp Term °F	48
Failsafe Min	60
<i>GAS</i>	
Duration Min	20
<i>OFFTIME</i>	
Duration Min	NA

Conventional Controls

Low Pressure Backup Control	
CI/CO (PSIG)	
R-22	34/24
R-502	42/32

Indoor Condenser only, Pressure	
Defrost Termination (PSIG)	
R-22	NA
R-502	NA

Physical Data

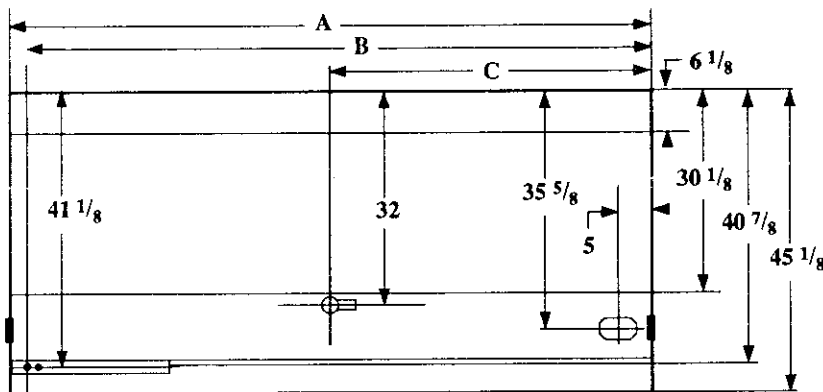
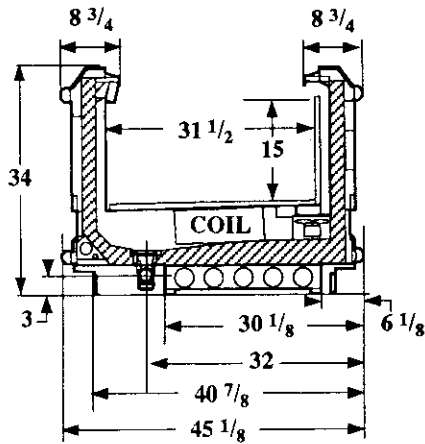
Merchandise	
Drip Pipe (ins)	1 1/2
Liquid Line (ins)	3/8
Suction Line (ins)	7/8

Evaporator Estimated Charge		
Length	R-22	R-502
	(lbs)	(lbs)
8	17	13
12	21	19

Length Added to Lineup by Ends and Partitions

Each End (ins)	1 1/2
Each Insulated	
Partition (ins)	1 1/2

Measurements in Inches



	Electrical Service	Dimension	8' Case	12' Case
	Waste Outlet	A	96 1/4	144 3/8
	Refrigeration Outlet	B	93 5/8	141 3/4
	Passageway Port	C	48 1/8	72 1/4

Vision NF1N Meat

Electrical Data
Merchandiser

Number of Fans - Evaporator

8Ft	12Ft
2	3

Merchandiser

Fans

Standard

Energy Efficient

Reverse Air

Constant on Anti-sweat Heaters

Cycling Anti-sweat Heaters

Min. Circuit Ampacity

With Standard Fans

With Energy Efficient Fans

With Reverse Air Fans

Max. Over Current Protection

Supplemental Gas Heaters

208V 1Φ Electric Defrost

120V 1Φ Supplemental Rev. Air

Amperes	
8Ft	12Ft
1.20	1.80
0.40	0.60
0.62	0.93
0.70	1.00
NA	
2.10	3.00
1.30	1.80
1.52	2.13
20	20
0.2	0.2
8.2	12.1
6.8	9.9

Watts	
8Ft	12Ft
80	120
40	60
60	90
84	120
25	25
1706	2517
816	1188

Standard Lighting

None

Revised 12-15-93