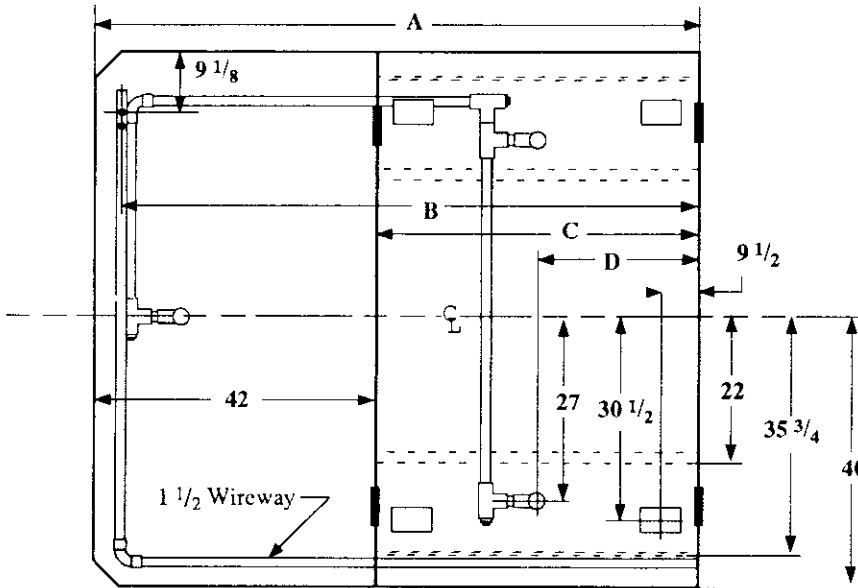
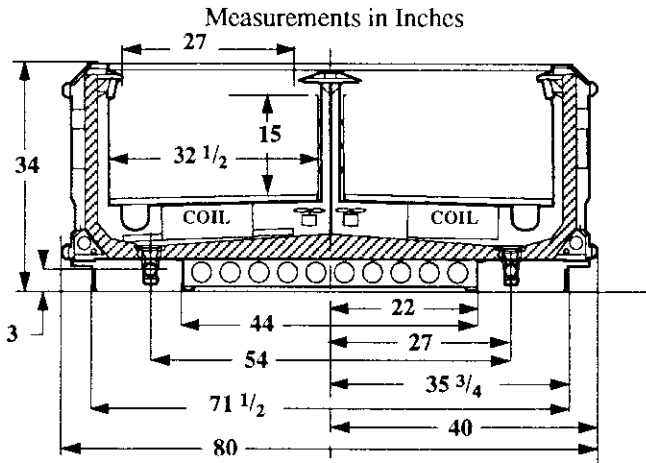


Single Level Wide Island Display, Unitized End and Center



- Electrical Service
- Waste Outlet
- Refrigeration Outlet
- Passageway Port

Dimension	90" Case	138" Case
A	90 1/4	138 3/8
B	86 1/4	134 3/8
C	48 1/4	96 3/8
D	24 1/8	48 1/4

**Refrigeration Data**

Discharge Air °F	24	
Evaporator °F	18	
Unit Sizing °F	16	
<i>BTU/HR/CASE</i>		
Parallel	90	138
	3360	5280
Satellite	3430	5390
Conventional	3570	5610

**Defrost Data**

Frequency Hrs	24
<i>ELECTRIC</i>	
Temp Term °F	52
Failsafe Min	60
<i>REVERSE AIR</i>	
Temp Term °F	48
Failsafe Min	60
<i>GAS</i>	
Duration Min	24
<i>OFFTIME</i>	
Duration Min	NA

**Conventional Controls**

Low Pressure Backup Control		
CI/CO (PSIG)		
R-22	34/24	R-502 42/32
Indoor Condenser only, Pressure Defrost Termination (PSIG)		
R-22	NA	R-502 NA

**Physical Data**

Merchandiser		
Drip Pipe (ins)	1 1/2	
Liquid Line (ins)	3/8	
Suction Line (ins)	7/8	

Length	Evaporator Estimated Charge	
	R-22 (lbs)	R-502 (lbs)
90	17	13
138	21	19

**Length Added to Lineup by Ends and Partitions**

Each End (ins)	6 1/2
Each Insulated Partition (ins)	1 1/2

<b>Vision NFCWE</b> <b>Meat</b>
------------------------------------

**Electrical Data**

**Merchandiser**

Number of Fans - Evaporator

<b>90In</b>	<b>138In</b>
3	5

<b>Merchandiser</b>	<b>Amperes</b>		<b>Watts</b>	
	<b>90In</b>	<b>138In</b>	<b>90In</b>	<b>138In</b>
Fans				
Standard	1.80	3.00	120	200
Energy Efficient	0.60	1.00	60	100
Reverse Air	0.93	1.65	90	150
Constant on Anti-sweat Heaters	3.30	5.50	396	660
Cycling Anti-sweat Heaters	NA			
Min. Circuit Ampacity				
With Standard Fans	5.30	8.70		
With Energy Efficient Fans	4.10	6.70		
With Reverse Air Fans	4.43	7.35		
Max. Over Current Protection	20	20		
Supplemental Gas Heaters	0.5	0.5	60	60
<b>208V 1Φ Electric Defrost</b>	13.1	21.5	2725	4472
<b>120V 1Φ Supplemental Rev. Air</b>	11.4	18.7	1368	2248

**Standard Lighting**

None