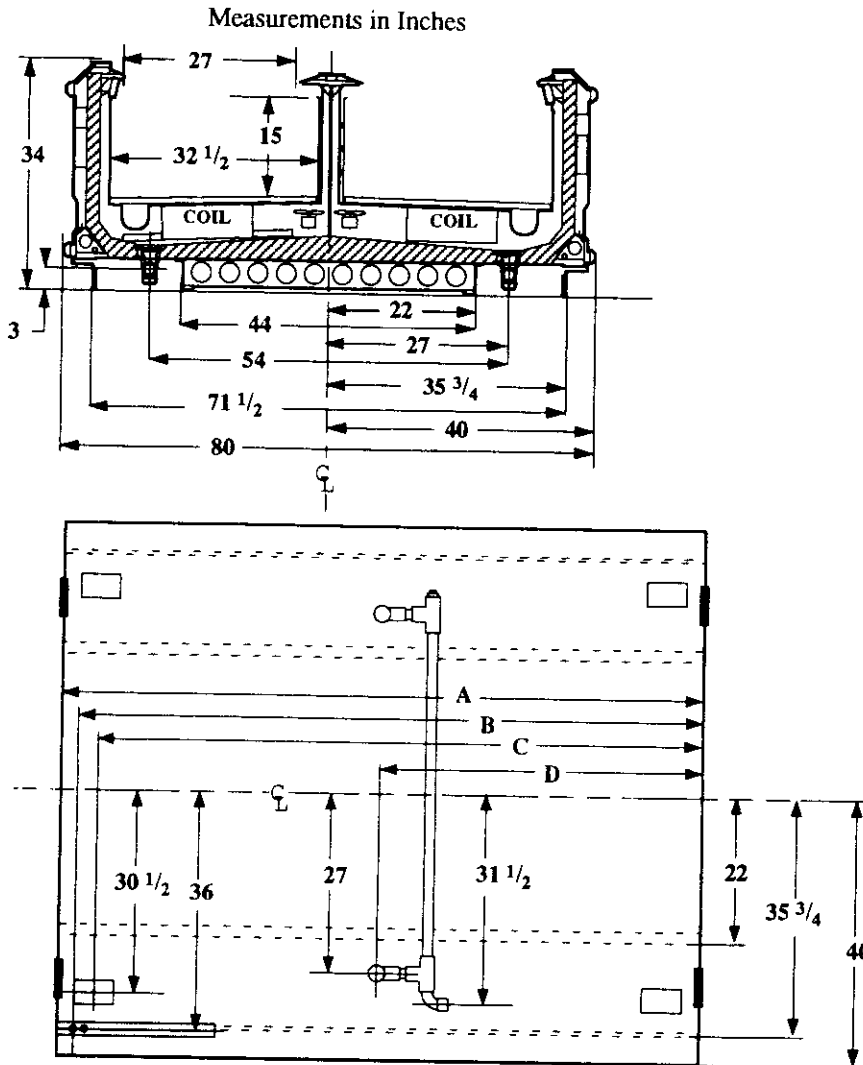


Single Level Wide Island Display

Vision NFCW
Frozen Food/Ice Cream



Refrigeration Data

Discharge Air °F	-20
Evaporator °F	-30
Unit Sizing °F	-33
BTU/HR/FOOT*	
Parallel	370
Satellite	385
Conventional	425

* PER side.

Defrost Data

Frequency Hrs	24
ELECTRIC	
Temp Term °F	52
Failsafe Min	60
REVERSE AIR	
Temp Term °F	48
Failsafe Min	90
GAS	
Duration Min	24
OFFTIME	
Duration Min	NA

Conventional Controls

Low Pressure Backup Control	
CI/CO (PSIG)	
R-22 7/0	R-502 7/0

Indoor Condenser only, Pressure Defrost Termination (PSIG)	
R-22 NA	R-502 NA

Physical Data

Merchandise	
Drip Pipe (ins)	1 1/2
Liquid Line (ins)	3/8
Suction Line (ins)	7/8

Evaporator Estimated Charge		
Length	R-22	R-502
	(lbs)	(lbs)
8	17	13
12	21	19

Length Added to Lineup by Ends and Partitions

Each End (ins)	1 1/2
Each Insulated Partition (ins)	
	1 1/2

Vision NFCW Frozen Food/Ice Cream
--

Electrical Data

Merchandiser

Number of Fans - Evaporator

8Ft	12Ft
4	6

Merchandiser	Amperes		Watts	
	8Ft	12Ft	8Ft	12Ft
Fans				
Standard	2.40	3.60	160	240
Energy Efficient	0.80	1.20	80	120
Reverse Air	1.24	1.96	120	180
Constant on Anti-sweat Heaters	1.60	2.40	192	288
Cycling Anti-sweat Heaters	NA			
Min. Circuit Ampacity				
With Standard Fans	4.20	6.20		
With Energy Efficient Fans	2.60	3.80		
With Reverse Air Fans	3.04	4.56		
Max. Over Current Protection	20	20		
Supplemental Gas Heaters	0.4	0.4	50	50
208V 1 Φ Electric Defrost	16.4	24.2	3411	5034
120V 1 Φ Supplemental Rev. Air	14.2	21.0	1704	2520

Standard Lighting

None

Revised 12-15-93