

Single Level Intermediate Island Display

Vision NFN
Frozen Food

Refrigeration Data

Discharge Air °F	-10
Evaporator °F	-20
Unit Sizing °F	-23
<i>BTU/HR/FOOT</i>	
Parallel	410
Satellite	Not Applied
Conventional	470

Defrost Data

Frequency Hrs	24
<i>ELECTRIC</i>	
Temp Term °F	52
Failsafe Min	60
<i>REVERSE AIR</i>	
Temp Term °F	48
Failsafe Min	90
<i>GAS</i>	
Duration Min	20
<i>OFFTIME</i>	
Duration Min	NA

Conventional Controls

Low Pressure Backup Control	
C/CO (PSIG)	
R-22 7/0	R-502 11/0
Indoor Condenser only, Pressure	
Defrost Termination (PSIG)	
R-22 NA	R-502 NA

Physical Data

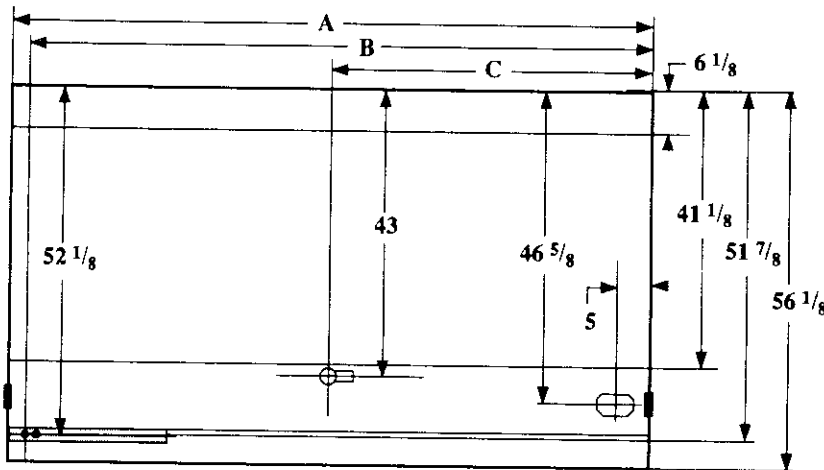
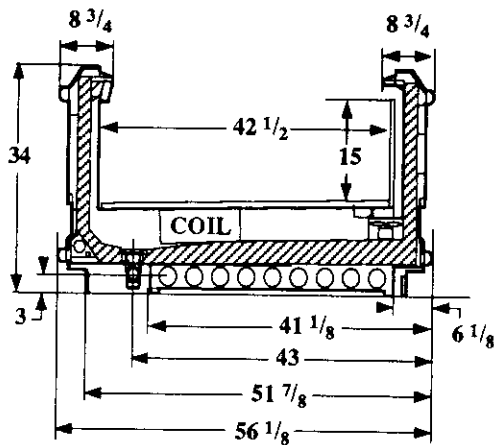
Merchandise	
Drip Pipe (ins)	1 1/2
Liquid Line (ins)	3/8
Suction Line (ins)	7/8

Evaporator Estimated Charge		
Length	R-22	R-502
	(lbs)	(lbs)
8	17	13
12	21	19

**Length Added to Lineup by
Ends and Partitions**

Each End (ins)	1 1/2
Each Insulated	
Partition (ins)	1 1/2

Measurements in Inches



	Electrical Service	Dimension	8' Case	12' Case
	Waste Outlet	A	96 1/4	144 3/8
	Refrigeration Outlet	B	93 5/8	141 3/4
	Passageway Port	C	48 1/8	72 1/4

Vision NFN Frozen Food

Electrical Data

Merchandise	8Ft	12Ft	Watts	
	8Ft	12Ft	8Ft	12Ft
Number of Fans - Evaporator	2	3		
	Amperes			
	8Ft	12Ft	8Ft	12Ft
Fans				
Standard	1.20	1.80	80	120
Energy Efficient	0.40	0.60	40	60
Reverse Air	0.62	0.93	60	90
Constant on Anti-sweat Heaters	0.70	1.00	84	120
Cycling Anti-sweat Heaters	NA			
Min. Circuit Ampacity				
With Standard Fans	2.10	3.00		
With Energy Efficient Fans	1.30	1.80		
With Reverse Air Fans	1.52	2.13		
Max. Over Current Protection	20	20		
Supplemental Gas Heaters	0.2	0.2	25	25
208V 1Φ Electric Defrost	10.5	15.7	2184	3266
120V 1Φ Supplemental Rev. Air	9.0	13.2	1080	1584

Standard Lighting

None

Revised 12-15-93