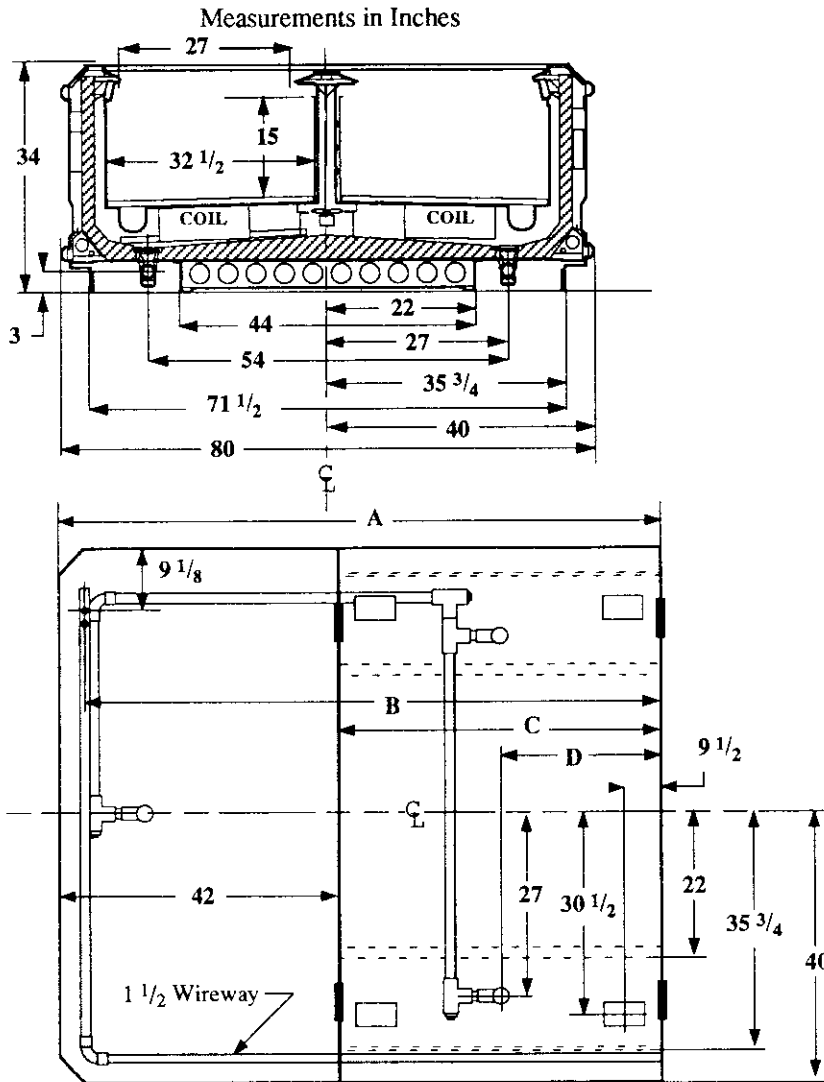


Single Level Wide Island Display, End and Center Unitized

Vision NFWE
Meat



Legend	Dimension	90" Case	138" Case
●●● Electrical Service	A	90 1/4	138 3/8
○ Waste Outlet	B	86 1/4	134 3/8
□ Refrigeration Outlet	C	48 1/4	96 3/8
┆ Passageway Port	D	24 1/8	48 1/4

Refrigeration Data

Discharge Air °F	24	
Evaporator °F	18	
Unit Sizing °F	16	
<i>BTU/HR/CASE</i>		
	90	138
Parallel	3360	5280
Satellite	3430	5390
Conventional	3570	5610

Defrost Data

Frequency Hrs	24
<i>ELECTRIC</i>	
Temp Term °F	52
Failsafe Min	60
<i>REVERSE AIR</i>	
Temp Term °F	48
Failsafe Min	60
<i>GAS</i>	
Duration Min	20
<i>OFFTIME</i>	
Duration Min	NA

Conventional Controls

Low Pressure Backup Control		
CI/CO (PSIG)		
R-22 34/24	R-502 42/32	
Indoor Condenser only, Pressure		
Defrost Termination (PSIG)		
R-22 NA	R-502 NA	

Physical Data

Merchandiser	
Drip Pipe (ins)	1 1/2
Liquid Line (ins)	3/8
Suction Line (ins)	7/8

Evaporator Estimated Charge		
Length	R-22 (lbs)	R-502 (lbs)
90	47	36
138	53	48

Length Added to Lineup by Ends and Partitions

Each End (ins)	6 1/2
Each Insulated Partition (ins)	
	1 1/2

Vision NFWE**Meat****Electrical Data****Merchandiser**

Number of Fans - Evaporator

90In	138In
2	3

Merchandiser**Fans**

	Amperes		Watts	
	90In	138In	90In	138In
Standard	1.20	1.80	80	120
Energy Efficient	0.40	0.60	40	60
Reverse Air	0.62	0.93	60	90
Constant on Anti-sweat Heaters	3.30	5.50	396	660
Cycling Anti-sweat Heaters	1.40	2.90	168	348
Min. Circuit Ampacity				
With Standard Fans	4.70	7.50		
With Energy Efficient Fans	3.90	6.30		
With Reverse Air Fans	4.12	6.63		
Max. Over Current Protection	20	20		
Supplemental Gas Heaters	0.5	0.5	60	60
208V 1Φ Electric Defrost	13.1	21.5	2725	4472
120V 1Φ Supplemental Rev. Air	11.4	18.7	1368	2248

Standard Lighting

None