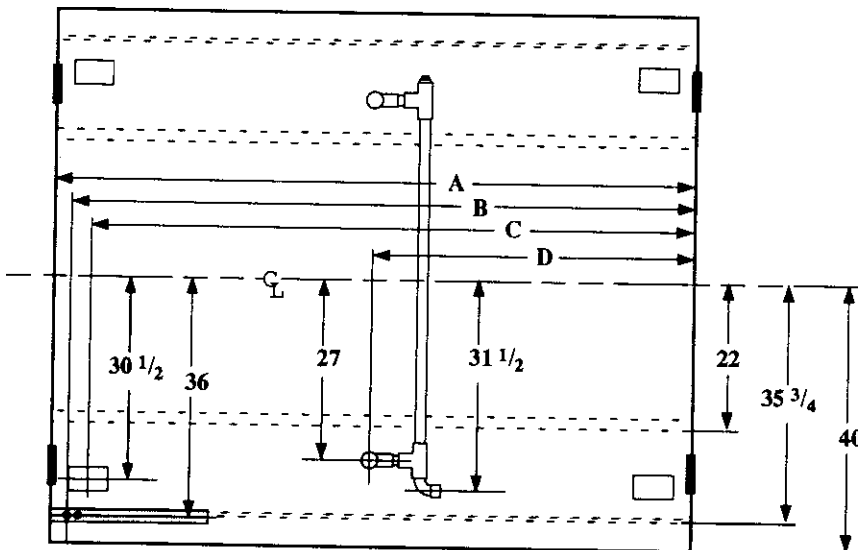
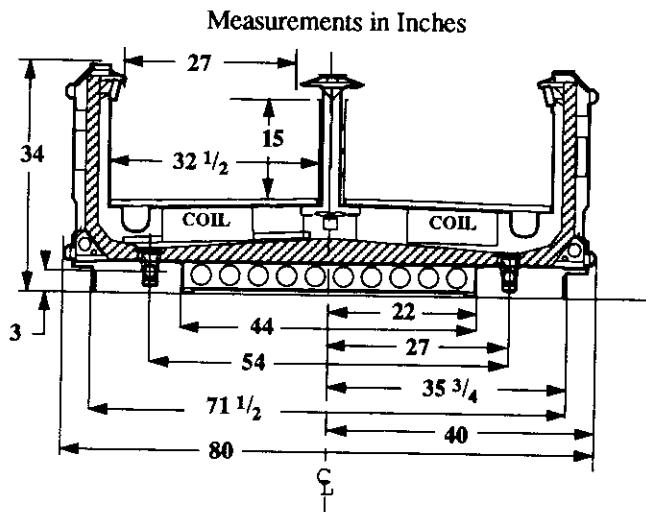


Single Level Wide Island Display

Vision NFW
Frozen Food



- Electrical Service
- Waste Outlet
- Refrigeration Outlet
- Passageway Port

Dimension	8' Case	12' Case
A	96 3/8	144 1/2
B	93 3/4	141 7/8
C	91 3/4	139 7/8
D	48 1/4	72 1/4

Refrigeration Data

Discharge Air °F	-10
Evaporator °F	-20
Unit Sizing °F	-23
<i>BTU/HR/FOOT*</i>	
Parallel	550
Satellite	Not Applied
Conventional	630

* Includes BOTH sides.

Defrost Data

Frequency Hrs	24
<i>ELECTRIC</i>	
Temp Term °F	52
Failsafe Min	60
<i>REVERSE AIR</i>	
Temp Term °F	48
Failsafe Min	90
<i>GAS</i>	
Duration Min	20
<i>OFFTIME</i>	
Duration Min	NA

Conventional Controls

Low Pressure Backup Control	
CI/CO (PSIG)	
R-22 7/0	R-502 11/0
Indoor Condenser only, Pressure	
Defrost Termination (PSIG)	
R-22 NA	R-502 NA

Physical Data

Merchandise	
Drip Pipe (ins)	1 1/2
Liquid Line (ins)	3/8
Suction Line (ins)	7/8

Evaporator Estimated Charge		
Length	R-22	R-502
	(lbs)	(lbs)
8	25	26
12	37	38

Length Added to Lineup by	
Ends and Partitions	
Each End (ins)	NA
Each Insulated	
Partition (ins)	1 1/2

Vision NFW Frozen Food

Electrical Data
Merchandiser

Number of Fans - Evaporator

8Ft	12Ft
2	3

Merchandiser	Amperes		Watts	
	8Ft	12Ft	8Ft	12Ft
Fans				
Standard	1.20	1.80	80	120
Energy Efficient	0.40	0.60	40	60
Reverse Air	0.62	0.93	60	90
Constant on Anti-sweat Heaters	1.60	2.40	192	288
Cycling Anti-sweat Heaters	NA			
Min. Circuit Ampacity				
With Standard Fans	3.00	4.40		
With Energy Efficient Fans	2.20	3.20		
With Reverse Air Fans	2.42	3.53		
Max. Over Current Protection	20	20		
Supplemental Gas Heaters	0.4	0.4	50	50
208V Electric Defrost	16.4	24.2	3411	5034
Supplemental Rev. Air	14.2	21.0	1704	2520

Standard Lighting

None

Revised 12-15-93