

Vision NP2
Produce

Refrigeration Data

| | |
|--------------------|-------------|
| Discharge Air °F | 39 |
| Evaporator °F | 21 |
| Unit Sizing °F | 19 |
| <i>BTU/HR/FOOT</i> | |
| Parallel | 770 |
| Satellite | Not Applied |
| Conventional | 865 |

Defrost Data

| | |
|-----------------------------|-------|
| Frequency Hrs | 6 |
| <i>ELECTRIC</i> | |
| Temp Term °F | NA |
| Failsafe Min | |
| <i>REVERSE AIR</i> | |
| Temp Term °F | NA |
| Failsafe Min | |
| <i>GAS</i> | |
| Duration Min | NA |
| <i>OFFTIME</i> | |
| Duration Min | 40 |
| <i>OFF CYCLE</i> | |
| CI/CO (PSIG) | 83/52 |
| (Must cycle every 6 hours.) | |

Conventional Controls

| | |
|-----------------------------|-------|
| Low Pressure Backup Control | |
| CI/CO (PSIG) | |
| R-22 | 37/27 |
| R-502 | 45/35 |

Indoor Condenser only, Pressure Defrost Termination (PSIG)

| | |
|-------|----|
| R-22 | 70 |
| R-502 | 82 |

Physical Data

| | |
|--------------------|-------|
| Merchandiser | |
| Drip Pipe (ins) | 1 1/2 |
| Liquid Line (ins) | 3/8 |
| Suction Line (ins) | 7/8 |

Evaporator Estimated Charge

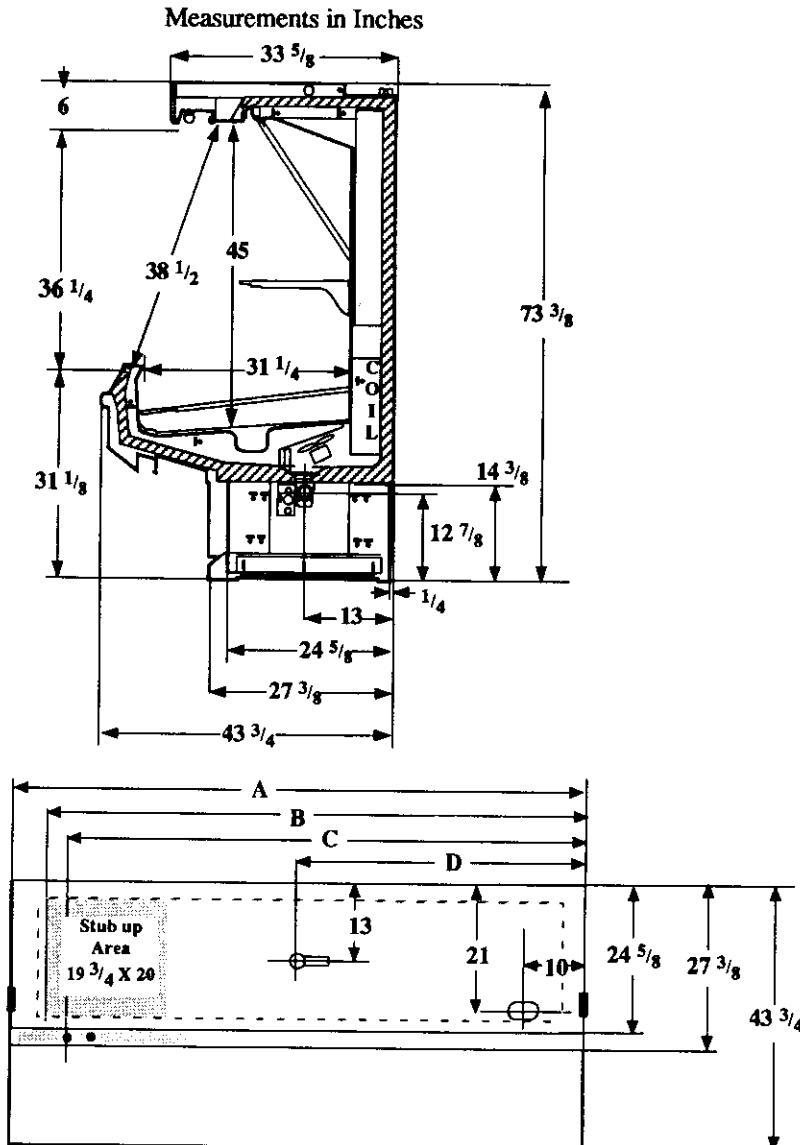
| Length | R-22 (lbs) | R-502 (lbs) |
|--------|------------|-------------|
| 8 | 6 | 6 |
| 12 | 9 | 9 |

Length Added to Lineup by Ends and Partitions

| | |
|----------------|-------|
| Each End (ins) | 1 1/2 |
|----------------|-------|

Each Insulated

| | |
|-----------------|-------|
| Partition (ins) | 1 1/2 |
|-----------------|-------|



| | | | | |
|--|----------------------|-----------|---------|----------|
| | Electrical Service | Dimension | 8' Case | 12' Case |
| | Waste Outlet | A | 96 3/8 | 144 1/2 |
| | Refrigeration Outlet | B | 90 3/8 | 138 1/2 |
| | Passageway Port | C | 86 3/8 | 134 1/2 |
| | | D | 48 1/8 | 72 1/4 |

| |
|-------------------------------------|
| Vision NP2 Produce |
|-------------------------------------|

Electrical Data

| Merchandiser | 8Ft | 12Ft | Watts | |
|----------------------------------|--------------------|------|-------|------|
| | 8Ft | 12Ft | 8Ft | 12Ft |
| Number of Fans - Evaporator | 1 | 2 | | |
| | Amperes | | | |
| Fans | 0.70 | 1.40 | 50 | 100 |
| Enrg Eff Fans (Reverse Air) | 0.26 | 0.52 | 27 | 54 |
| Constant on Anti-sweat Heaters | NA | | | |
| Cycling Anti-sweat Heaters | NA | | | |
| Min. Circuit Ampacity | 0.90 | 1.60 | | |
| With Enrg Eff Fans (Reverse Air) | 0.46 | 0.72 | | |
| Max. Over Current Protection | 20 | 20 | | |
| Supplemental Gas Heaters | NA | | | |
| 208V 1Φ Electric Defrost | NA | | | |
| 120V 1Φ Supplemental Rev. Air | NA | | | |
| | Standard Lighting* | | | |
| 1 Row Canopy | | | | |
| Advance | 0.73 | 1.19 | 86 | 141 |
| Valmont (GE) | 0.73 | 1.13 | 86 | 134 |
| Magnatec/Universal | 0.73 | 1.17 | 86 | 136 |

Revised 06-15-93