

Wide Island, Single Display Level with 41 inch Center Rail
 Available with (H) 46 inch Center Rail
 Available with wrap around end NPE, NPHE

Vision NPW(H)
Produce

Refrigeration Data

Discharge Air °F	39
Evaporator °F	21
Unit Sizing °F	19
<i>BTU/HR/FOOT</i>	
Parallel	1175
Satellite	Not Applied
Conventional	1235

Defrost Data

Frequency Hrs	8
<i>ELECTRIC</i>	
Temp Term °F	NA
Failsafe Min	
<i>REVERSE AIR</i>	
Temp Term °F	NA
Failsafe Min	
<i>GAS</i>	
Duration Min	NA
<i>OFFTIME</i>	
Duration Min	40
<i>OFF CYCLE</i>	
CI/CO (PSIG)	83/52
(Must cycle every 8 hours.)	

Conventional Controls

Low Pressure Backup Control	
CI/CO (PSIG)	
R-22	37/27
R-502	45/35
Indoor Condenser only, Pressure	
Defrost Termination (PSIG)	
R-22	70
R-502	82

Physical Data

Merchandiser	
Drip Pipe (ins)	1 1/2
Liquid Line (ins)	3/8
Suction Line (ins)	7/8

Evaporator Estimated Charge

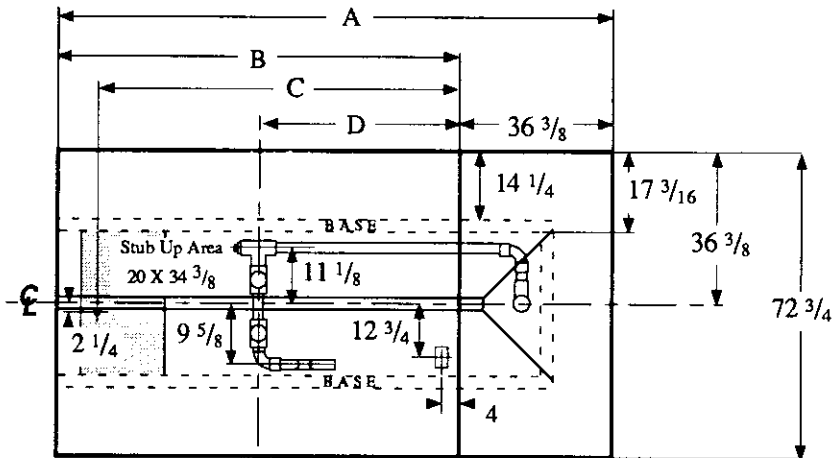
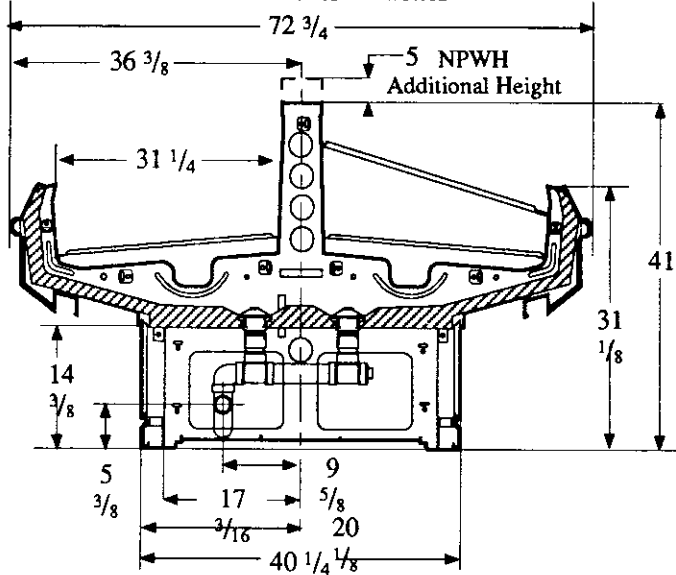
Length	R-22	R-502
	(lbs)	(lbs)
8	6	6
12	9	9

**Length Added to Lineup by
 Ends and Partitions**

Each End (ins) 1 1/2

Each Insulated
 Partition (ins) 1 1/2

Measurements in Inches



••• Electrical Service	Dimension	6' Case	8' Case	12' Case
○ Waste Outlet	A	108 5/8	132 3/4	180 7/8
□ Refrigeration Outlet	B	72 1/4	96 3/8	144 1/2
	C	62 1/4	86 3/8	134 1/2
	D	36 1/8	48 3/16	72 1/4

Vision NPW(H) Produce
--

Electrical Data

Merchandiser	6Ft	8Ft	12Ft			
	Amperes			Watts		
	6Ft	8Ft	12Ft	6Ft	8Ft	12Ft
Number of Fans - Evaporator	2	2	3			
Fans	1.40	1.40	2.10	100	100	150
Enrg Eff Fans (Reverse Air)	0.52	0.52	0.78	54	54	81
Constant on Anti-sweat Heaters		NA				
Cycling Anti-sweat Heaters		NA				
Min. Circuit Ampacity	1.60	1.60	2.30			
With Enrg Eff Fans (Reverse Air)	0.72	0.72	0.98			
Max. Over Current Protection		20	20			
Supplemental Gas Heaters		NA				
208V 1Φ Electric Defrost		NA				
120V 1Φ Supplemental Rev. Air		NA				

Standard Lighting*

None