

VuMor, Gravity Coil, 2 Display Levels (including Mezzanine Shelf),
Rear Sliding Doors, 22 inch Front Glass

Vision NVGA
Meat

Refrigeration Data

Discharge Temp °F 24
Evaporator °F 22
Unit Sizing °F 20

BTU/HR/FOOT
Parallel 162
Satellite 166
Conventional 170

Both EPR and Thermostat
Required

Defrost Data

Frequency Hrs 24

ELECTRIC
Temp Term °F NA
Failsafe Min NA

REVERSE AIR
Temp Term °F NA
Failsafe Min NA

GAS
Duration Min NA

OFFTIME
Duration Min 110

Conventional Controls

Low Pressure Backup Control
C/CO (PSIG)
R-22 38/28 R-502 47/37

Indoor Condenser only, Pressure
Defrost Termination (PSIG)
R-22 76 R-502 89

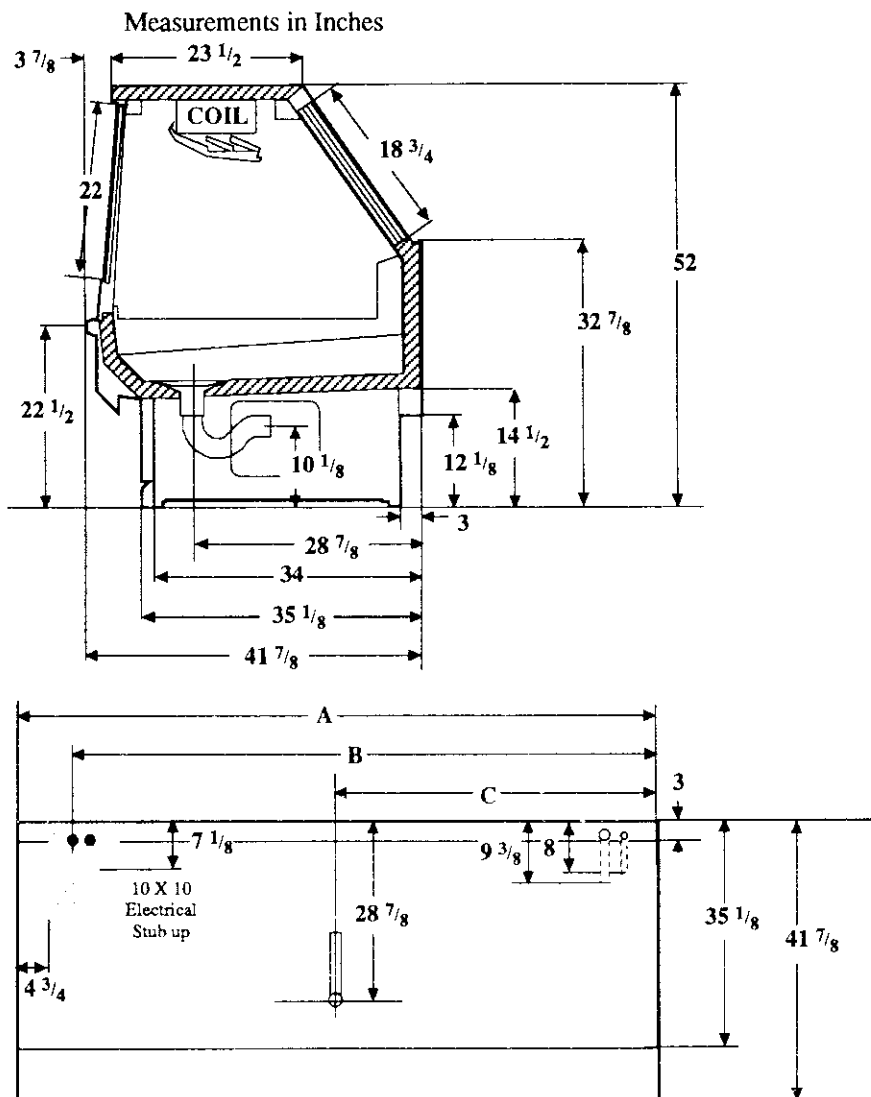
Physical Data

Merchandiser
Drip Pipe (in.) 2
Liquid Line (in.) 3/8
Suction Line (in.) 5/8

Length	Evaporator Estimated Charge	
	R-22 (lbs)	R-502 (lbs)
8'	17	17
12'	25	25

Length Added to Lineup by
Ends and Partitions

Each End (in.) 1 1/2
Each Partition (in.) 1 1/2



	Dimension	8' Case	12' Case
Electrical Service	A	96 1/8	144 1/2
Waste Outlet	B	87 5/8	136
Refrigeration Line	C	48	72 1/4
Connection			

Vision NVGA Meat

Electrical Data

Merchandiser	8Ft	12Ft		
Number of Fans - Evaporator	NA			

Merchandiser	Amperes		Watts	
	8Ft	12Ft	8Ft	12Ft
Fans	NA			
Enrg Eff Fans (Reverse Air)	NA			
Constant on Anti-sweat Heaters	NA			
Cycling Anti-sweat Heaters	NA			
Supplemental Gas Heaters	NA			
Min. Circuit Ampacity	NA	NA		
With Enrg Eff Fans (Reverse Air)	NA			
Max. Over Current Protection	20	20		
208V 1Φ Electric Defrost	NA			
120V 1Φ Supplemental Rev. Air	NA			

Standard Lighting

1 Row Top Interior				
Advance	0.73	1.19	86	141
Valmont (GE)	0.73	1.13	86	134
Magnatec/Universal	0.73	1.17	86	136

Revised 12-15-93