

VuMor, Gravity Coil, 2 Display Levels (including Mezzanine Shelf),  
Rear Sliding Doors, 25 inch Front Glass

**Vision NVGB**  
Meat

**Refrigeration Data**

Discharge Temp °F	24
Evaporator °F	22
Unit Sizing °F	20
<i>BTU/HR/FOOT</i>	
Parallel	162
Satellite	166
Conventional	170
Both EPR and Thermostat Required	

**Defrost Data**

Frequency Hrs	24
<i>ELECTRIC</i>	
Temp Term °F	NA
Failsafe Min	NA
<i>REVERSE AIR</i>	
Temp Term °F	NA
Failsafe Min	NA
<i>GAS</i>	
Duration Min	NA
<i>OFFTIME</i>	
Duration Min	110

**Conventional Controls**

Low Pressure Backup Control	
CI/CO (PSIG)	
R-22 38/28	R-502 47/37
Indoor Condenser only, Pressure	
Defrost Termination (PSIG)	
R-22 76	R-502 89

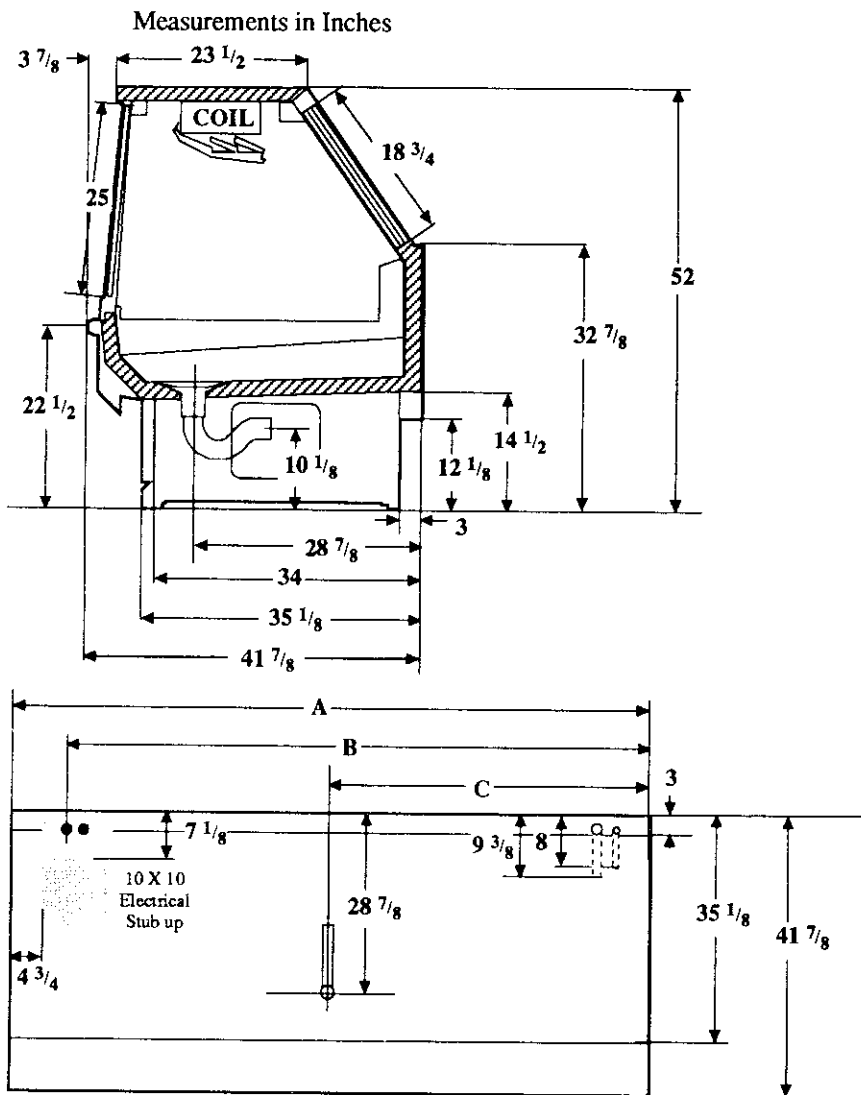
**Physical Data**

Merchandiser	
Drip Pipe (in.)	2
Liquid Line (in.)	3/8
Suction Line (in.)	5/8

Evaporator Estimated Charge		
Length	R-22	R-502
	(lbs)	(lbs)
8'	17	17
12'	25	25

**Length Added to Lineup by  
Ends and Partitions**

Each End (in.)	1 1/2
Each Partition (in.)	1 1/2



Electrical Service	<b>Dimension</b>	<b>8' Case</b>	<b>12' Case</b>
Waste Outlet	A	96 1/8	144 1/2
Refrigeration Line Connection	B	87 5/8	136
	C	48	72 1/4

<b>Vision NVGB</b> <b>Meat</b>
-----------------------------------

**Electrical Data**

<b>Merchandiser</b>	<b>8Ft</b>	<b>12Ft</b>
Number of Fans - Evaporator	NA	

<b>Merchandiser</b>	<b>Amperes</b>		<b>Watts</b>	
	<b>8Ft</b>	<b>12Ft</b>	<b>8Ft</b>	<b>12Ft</b>
Fans	NA			
Enrg Eff Fans (Reverse Air)	NA			
Constant on Anti-sweat Heaters	NA			
Cycling Anti-sweat Heaters	NA			
Supplemental Gas Heaters	NA			
Min. Circuit Ampacity	NA	NA		
With Enrg Eff Fans (Reverse Air)	NA			
Max. Over Current Protection	20	20		
<b>208V 1Φ Electric Defrost</b>	NA			
<b>120V 1Φ Supplemental Rev. Air</b>	NA			

**Standard Lighting**

<b>1 Row Top Interior</b>				
Advance	0.73	1.19	86	141
Valmont (GE)	0.73	1.13	86	134
Magnatec/Universal	0.73	1.17	86	136

Revised 12-15-93