

VuMor, Non-refrigerated, Single Display Level, Rear Sliding Doors,  
25 inch Front Glass

Vision **NVSB**  
Seafood

**Refrigeration Data**

Product Temp °F	NA
Evaporator °F	NA
Unit Sizing °F	NA
<i>BTU/HR/FOOT</i>	
Parallel	NA
Satellite	NA
Conventional	NA

**Defrost Data**

Frequency Hrs	NA
<i>ELECTRIC</i>	
Temp Term °F	NA
Failsafe Min	NA
<i>REVERSE AIR</i>	
Temp Term °F	NA
Failsafe Min	NA
<i>GAS</i>	
Duration Min	NA
<i>OFFTIME</i>	
Duration Min	NA

**Conventional Controls**

Low Pressure Backup Control	
CI/CO (PSIG)	
R-22 NA	R-502 NA
Indoor Condenser only, Pressure	
Defrost Termination (PSIG)	
R-22 NA	R-502 NA

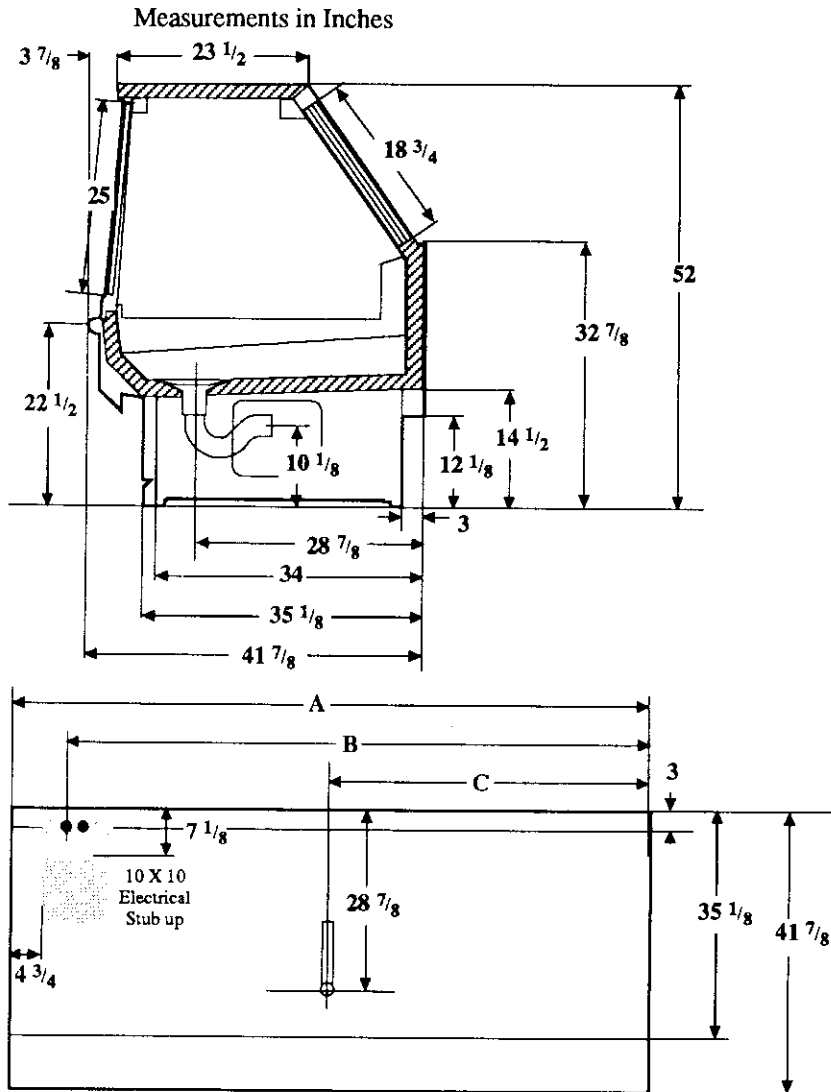
**Physical Data**

Merchandise	
Drip Pipe (in.)	2
Liquid Line (in.)	NA
Suction Line (in.)	NA

<b>Evaporator Estimated Charge</b>		
Length	R-22	R-502
	(lbs)	(lbs)
8'	NA	NA
12'	NA	NA

**Length Added to Lineup by  
Ends and Partitions**

Each End (in.)	1 1/2
Each Partition (in.)	1 1/2



Electrical Service  
Waste Outlet

<b>Dimension</b>	<b>8' Case</b>	<b>12' Case</b>
A	96 1/8	144 1/2
B	87 5/8	136
C	48	72 1/4

<b>Vision NVSB</b> <b>Seafood</b>
--------------------------------------

**Electrical Data**

**Merchandiser**                      **8Ft**    **12Ft**  
Number of Fans                      NA

<b>Merchandiser</b>	<b>Amperes</b>		<b>Watts</b>	
	<b>8Ft</b>	<b>12Ft</b>	<b>8Ft</b>	<b>12Ft</b>
Fans	NA			
Enrg Eff Fans (Reverse Air)	NA			
Constant on Anti-sweat Heaters	NA			
Cycling Anti-sweat Heaters	NA			
Supplemental Gas Heaters	NA			
Min. Circuit Ampacity	NA			
With Enrg Eff Fans (Reverse Air)	NA			
Max. Over Current Protection	20	20		
208V 1Φ Electric Defrost	NA			
120V 1Φ Supplemental Rev. Air	NA			

**Standard Lighting**

1 Row Top Interior				
Advance	0.73	1.19	86	141
Valmont (GE)	0.73	1.13	86	134
Magnatec/Universal	0.73	1.17	86	136