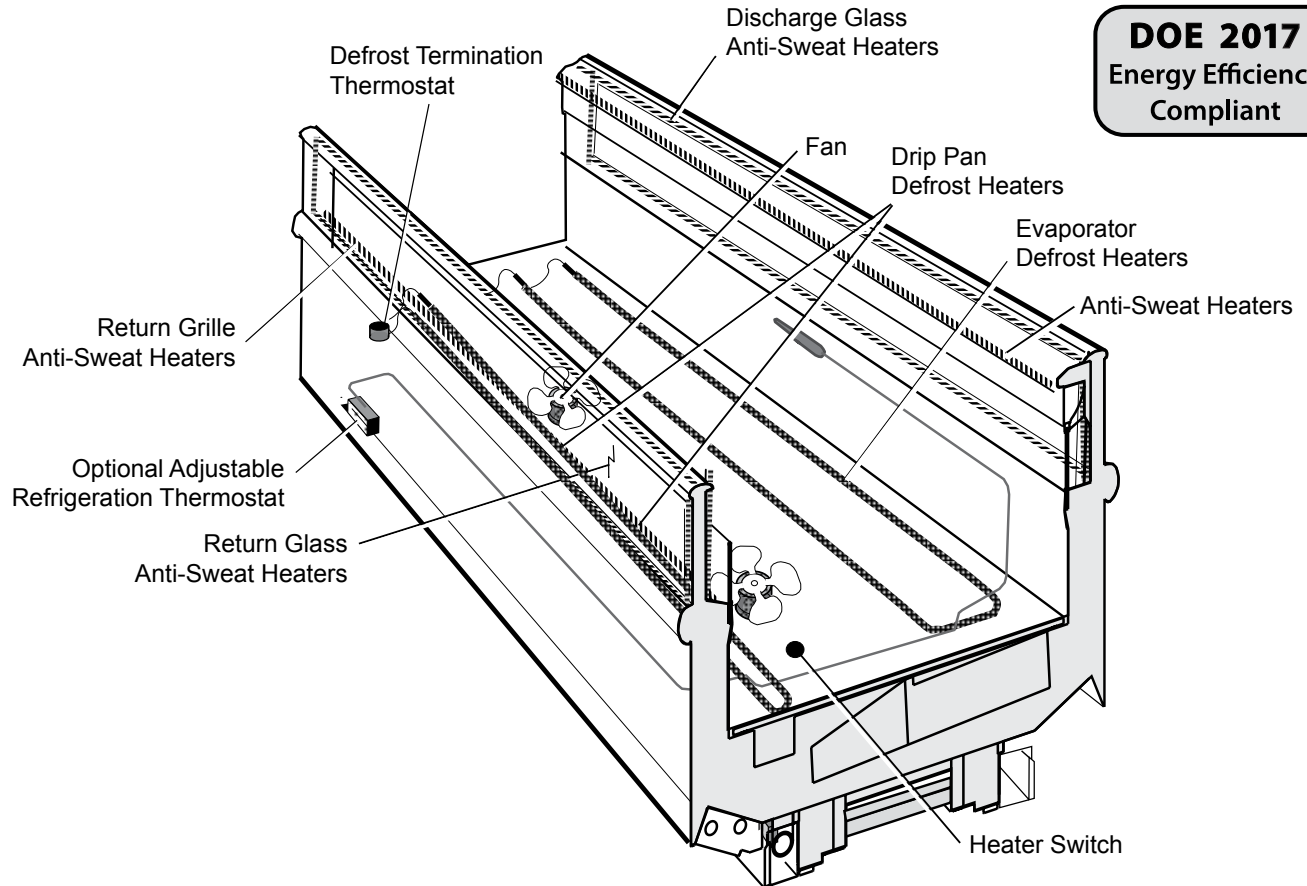
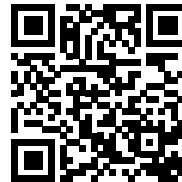


**DOE 2017**  
Energy Efficiency  
Compliant



#### NSF Certification

This merchandiser model is manufactured to meet NSF/ANSI (National Sanitation Foundation) Standard #7 requirements for construction, materials and cleanability.



Scan the QR code on your mobile device to access additional product information or order parts.

Parts may also be ordered at:

[parts.husmann.com](http://parts.husmann.com)

Call toll free: 1.855.487.7778

We reserve the right to change or revise specifications and product design in connection with any feature of our products. Such changes do not entitle the buyer to corresponding changes, improvements, additions or replacements for equipment previously sold or shipped.

Data sheet-Excel-FIG

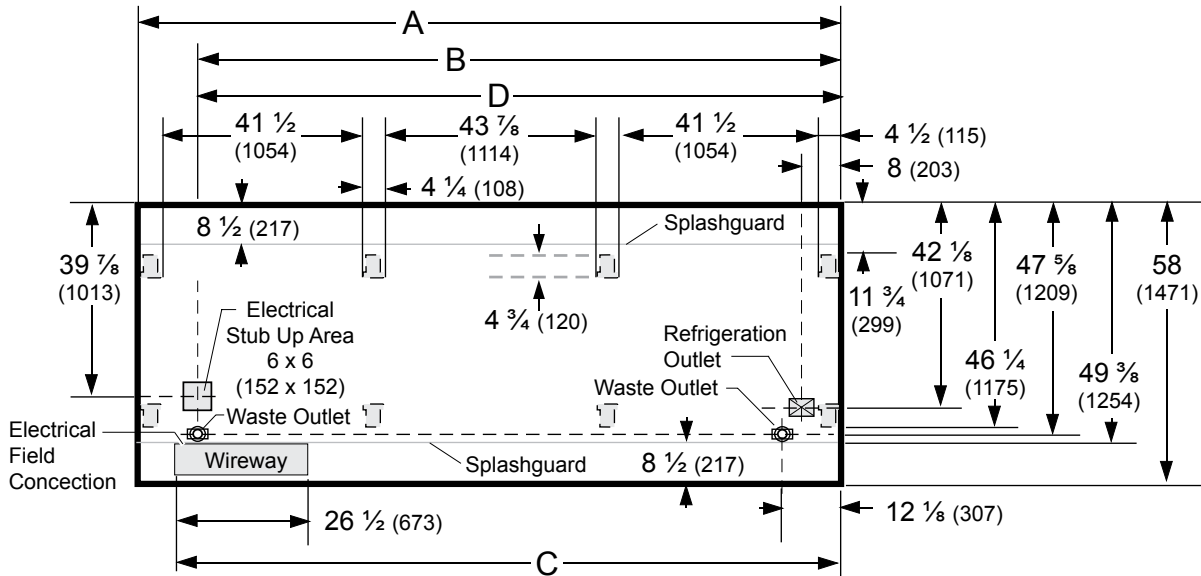
Note: Revision L: Added 6 foot data

# Engineering Plan Views

PHYSICAL DATA	
Merchandiser Drip Pipe (in.)	1 1/4
Merchandiser Liquid Line (in.)	3/8
Merchandiser Suction Line (in.)	5/8

## Intermediate Island Frozen Food

Dimensions shown as inches & (mm).



**NOTE: Case-to-Case Electrical Connections are made IN FRONT OF SPLASHGUARD.**

FRONT

	6 ft	8 ft	12 ft
<b>General</b>			
<b>(A)</b> Case Length ( <i>without ends or partitions</i> )	73 3/4 (1872)	96 3/8 (2448)	144 1/2 (3670)
<i>(Each end and insulated partition adds 2 in. (51 mm) to case line up.)</i>			
Maximum O/S dimension of case back to front ( <i>includes bumper</i> )	58 (1471)	58 (1471)	58 (1471)
Back of case to front of splashguard	49 3/8 (1254)	49 3/8 (1254)	49 3/8 (1254)
Back of case to O/S edge of front leg	46 1/4 (1175)	46 1/4 (1175)	46 1/4 (1175)
Distance between edges of external legs and center legs	48 1/2 (1232)	41 1/2 (1054)	41 1/2 (1054)
Distance between edges of center legs	NA	NA	43 7/8 (1114)
Distance between front legs and splashguard	3 1/8 (82)	3 1/8 (82)	3 1/8 (82)
<b>Electrical Service</b> <input checked="" type="checkbox"/> ( <i>Electrical Field Wiring connection point</i> )			
<b>(B)</b> RH End of case to center of stub up area	58 3/4 (1492)	84 1/4 (2141)	132 3/8 (3363)
Back of case to center of stub up area	39 7/8 (1013)	39 7/8 (1013)	39 7/8 (1013)
Length of electrical wireway <input type="checkbox"/> <b>Wireway</b>	26 1/2 (673)	26 1/2 (673)	26 1/2 (673)
<b>(C)</b> RH End of case to LH end of wireway	67 3/4 (1720)	90 1/8 (2289)	138 1/4 (3511)
<b>Waste Outlets</b> ( <i>One each end</i> ) <input checked="" type="checkbox"/>			
<b>(D)</b> RH End of case to the center of LH waste outlet	61 1/2 (1562)	84 1/4 (2141)	132 3/8 (3363)
RH End of case to the center of RH waste outlet	12 1/8 (307)	12 1/8 (307)	12 1/8 (307)
Back O/S of case to center of waste outlets	47 5/8 (1209)	47 5/8 (1209)	47 5/8 (1209)
Schedule 40 PVC drip pipe	1 1/4 (32)	1 1/4 (32)	1 1/4 (32)
<b>Refrigeration Outlet</b> <input type="checkbox"/>			
Back of case to center of refrigeration outlet	42 1/8 (1071)	42 1/8 (1071)	42 1/8 (1071)
RH end of case to center of refrigeration outlet	8 (203)	8 (203)	8 (203)

Intermediate Island Display with Glass Walls



Hussmann refrigerated merchandisers configured for sale for use in the United States meet or surpass the requirements of the DOE 2017 energy efficiency standards.

**Excel FIG**  
**Low / Medium Temperature**

**REFRIGERATION DATA§**

**Note:** This data is based on store temperature and humidity that does not exceed 75°F and 55% R.H.

	MED	FF
<b>Discharge Air (°F)</b>	+24	-12
<b>Evaporator(°F)</b>	+19	-20
<b>Unit Sizing (°F)</b>	+17	-23

§ Average evaporator temperature shown. Use dew point for high glide refrigerants for unit sizing. Care should be taken to use the dew point in PT tables for measuring and adjusting superheat. Adjust evaporator pressure as needed to maintain discharge air temperature shown.

<i>Btu/hr/ft</i>	MED	FF
<b>Parallel</b>	345	535
<b>Conventional</b>	360	560

**DEFROST DATA**

	MED	FF
<b>Frequency (hr)</b>	24	24
<b>Defrost Water (lb/ft/day)</b>	0.8	1.0

(± 15% based on case configuration and product loading).

<i>ELECTRIC</i>	MED	FF
<b>Temp Term (°F)</b>	48	48
<b>Failsafe (minutes)</b>	60	60

<i>GAS</i>	MED	FF
<b>Duration (minutes)</b>	NA	15

**OFFTIME** Not Recommended

**Standard Defrost Thermostat**

Close on rise: close 48°F — open 33°F

**CONVENTIONAL CONTROLS**

**Low Pressure Backup Control — CI/CO \*\***

	MED	FF
	+22°F / +10°F	
		-17°F / -29°F

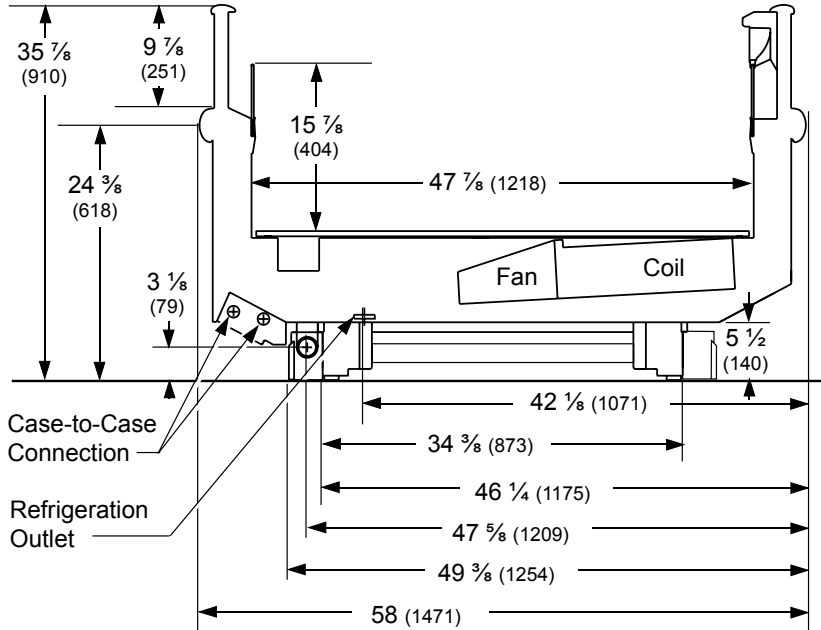
**Indoor Unit Only, Pressure Defrost**

**Termination\*** Not Recommended

\*Use a Temperature Pressure Chart to determine PSIG conversions.

**FIG**

Dimensions shown as inches & (mm).



**Estimated Charge \*\***

6 ft	1.9 lb	30 oz	0.86 kg
8 ft	2.5 lb	40 oz	1.1 kg
12 ft	3.7 lb	59 oz	1.7 kg

\*\*This is an average for all refrigerant types. Actual refrigerant charge may vary by approximately half a pound (8 oz/0.2 kg).

**NSF Certification**

This merchandiser model is manufactured to meet NSF/ANSI (National Sanitation Foundation) Standard #7 requirements for construction, materials & cleanability.

**Electrical Data**

			<b>6 ft</b>	<b>8 ft</b>	<b>12 ft</b>			
<b>Number of Fans – 4W Evaporator</b>			<b>1</b>	<b>2</b>	<b>3</b>			
			<b>Amperes</b>			<b>Watts</b>		
			<b>6 ft</b>	<b>8 ft</b>	<b>12 ft</b>	<b>6 ft</b>	<b>8 ft</b>	<b>12 ft</b>
<b>Evaporator Fans</b>								
120V	50/60Hz	Standard Energy Efficient	0.12	0.24	0.36	8	16	24
230V	50/60Hz	Standard Energy Efficient	0.06	0.12	0.18	8	16	24
230V	60Hz	Export	0.15	0.30	0.45	24	48	72
230V	50Hz	Export	0.18	0.36	0.54	27	54	81
<b>Anti-sweat Heaters (on fan circuit)</b>								
120V	50/60Hz	Standard	0.65	0.87	1.30	78	104	156
230V	50/60Hz	Export	0.34	0.45	0.68	78	104	156
<b>Minimum Circuit Ampacity</b>								
120V	50/60Hz	Standard Energy Efficient	0.97	1.31	1.86			
230V	50/60Hz	Standard Energy Efficient	0.60	0.77	1.06			
230V	60Hz	Export	0.69	0.95	1.33			
230V	50Hz	Export	0.72	1.01	1.42			
<b>Maximum Over Current Protection 120V</b>			<b>20</b>	<b>20</b>	<b>20</b>			
<b>Maximum Over Current Protection 230V</b>			<b>15</b>	<b>15</b>	<b>15</b>			
<b>Return Glass Anti-sweat Heaters</b>								
120V	50/60Hz	Standard	0.06	0.08	0.11	7.3	9	13
230V	50/60Hz	Export	0.03	0.04	0.06	7.3	9	13
<b>Discharge Glass Anti-sweat Heaters</b>								
120V	50/60Hz	Standard	0.35	0.46	0.66	42	55	79
230V	50/60Hz	Export	0.18	0.24	0.34	42	55	79
<b>208V Electric Defrost (Coil &amp; Drain Heater)</b>			5.77	9.13	13.94	1200	1900	2900
<b>230V Export Electric Defrost (Coil &amp; Drain Heater)</b>			5.22	8.26	12.61	1200	1900	2900
<b>120V Koolgas Defrost</b>			1.33	1.67	3.33	160	200	400
<b>208V Koolgas Defrost</b>			0.77	0.96	1.92	160	200	400
<b>230V Koolgas Defrost</b>			0.85	1.06	2.12	196	244	488
<b>Standard Lighting</b>								
None								

**Product Data**

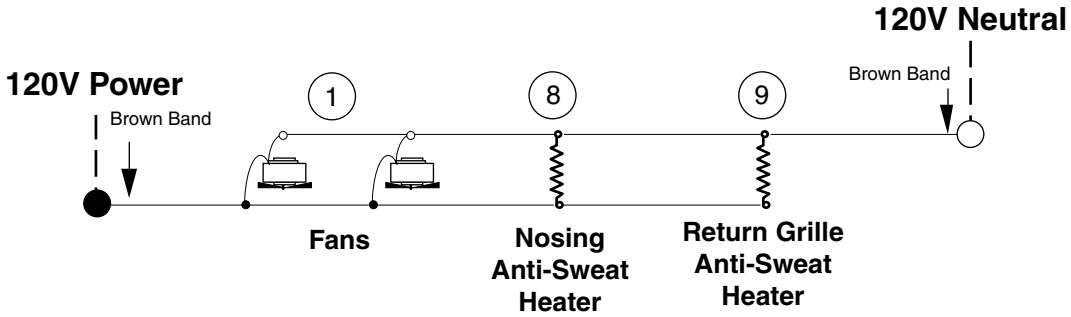
<i>Recommended Usable Cube</i> <sup>1</sup> (Cu Ft/Ft)	5.30 ft <sup>3</sup> /ft (0.49 m <sup>3</sup> /m)
<i>AHRI Total Display Area</i> <sup>2</sup> (Sq Ft/Ft)	4.58 ft <sup>2</sup> /ft (1.40 m <sup>2</sup> /m)
<i>Shelf Area</i> <sup>3</sup> (Sq Ft/Ft)	4.00 ft <sup>2</sup> /ft (1.22 m <sup>2</sup> /m)

<sup>1</sup> AHRI Refrigerated Volume less shelving and other unusable space: Refrigerated Volume/Unit of Length, ft<sup>3</sup>/ft [m<sup>3</sup>/m]  
<sup>2</sup> Computed using AHRI 1200 standard methodology: Total Display Area, ft<sup>2</sup> [m<sup>2</sup>]/Unit of Length, ft [m]  
<sup>3</sup> Shelf surface area is composed of bottom deck plus standard shelf complement, as shown in the Hussmann *Product Reference Guide*. The standard shelf complement for this model is NONE.

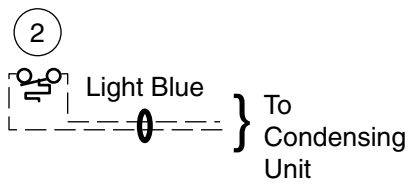
<b>ESTIMATED SHIPPING WEIGHT <sup>4</sup></b>				
<b>Case</b>	<i>6 ft</i>	<i>8 ft</i>	<i>12 ft</i>	<b>Solid End</b>
				<i>(each)</i>
<b>lb (kg)</b>	800 (363)	1000 (454)	1200 (544)	50 (23)

<sup>4</sup> Actual weights will vary according to optional kits included.

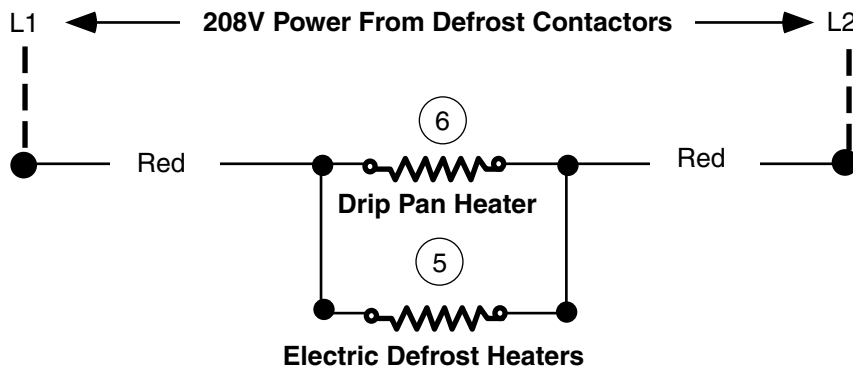
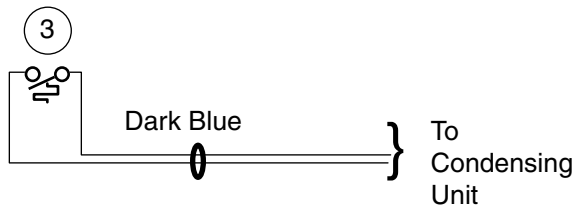
# Electric Defrost – Standard



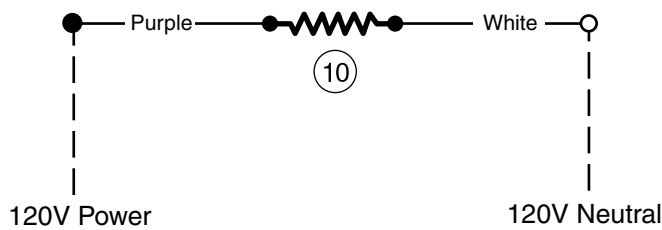
## Refrigeration Thermostat (Optional)



## Defrost Termination Thermostat



## Return Glass Anti-Sweat Heater

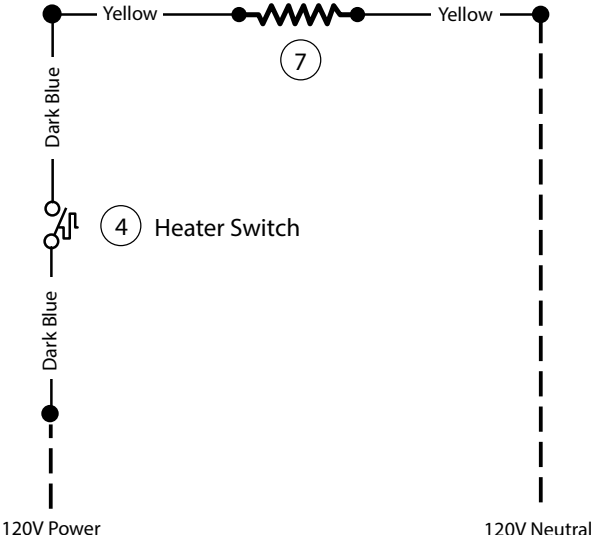


### WARNING

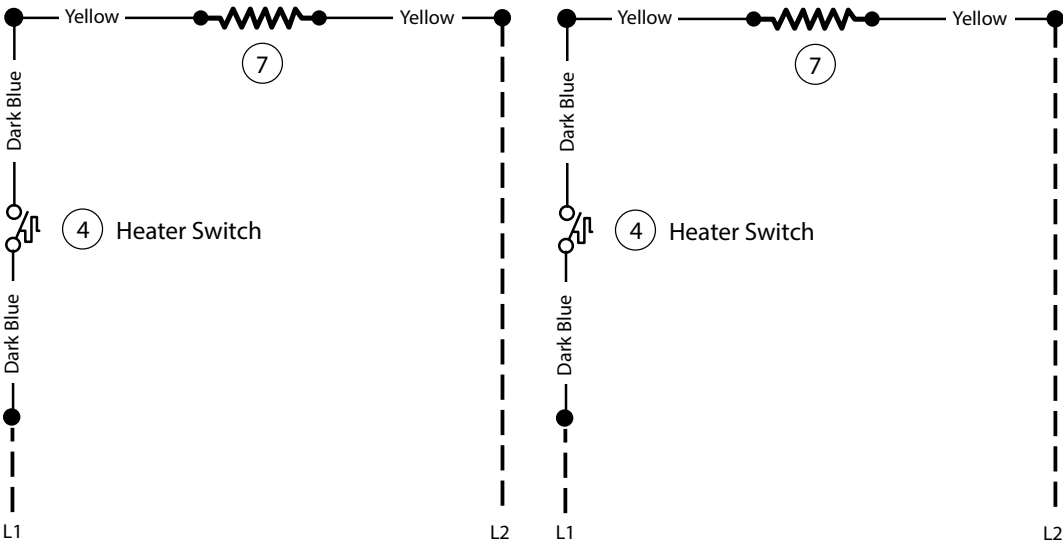
All components must have mechanical ground, and the merchandiser must be grounded.  
 Circled Number = Parts List Item Numbers

# Gas Defrost – Optional

## 120V Drip Pan Heater — Koolgas Only



## 208V/230V Drip Pan Heater — Koolgas Only



**WARNING**

All components must have mechanical ground, and the merchandiser must be grounded.  
 Circled Number = Parts List Item Numbers