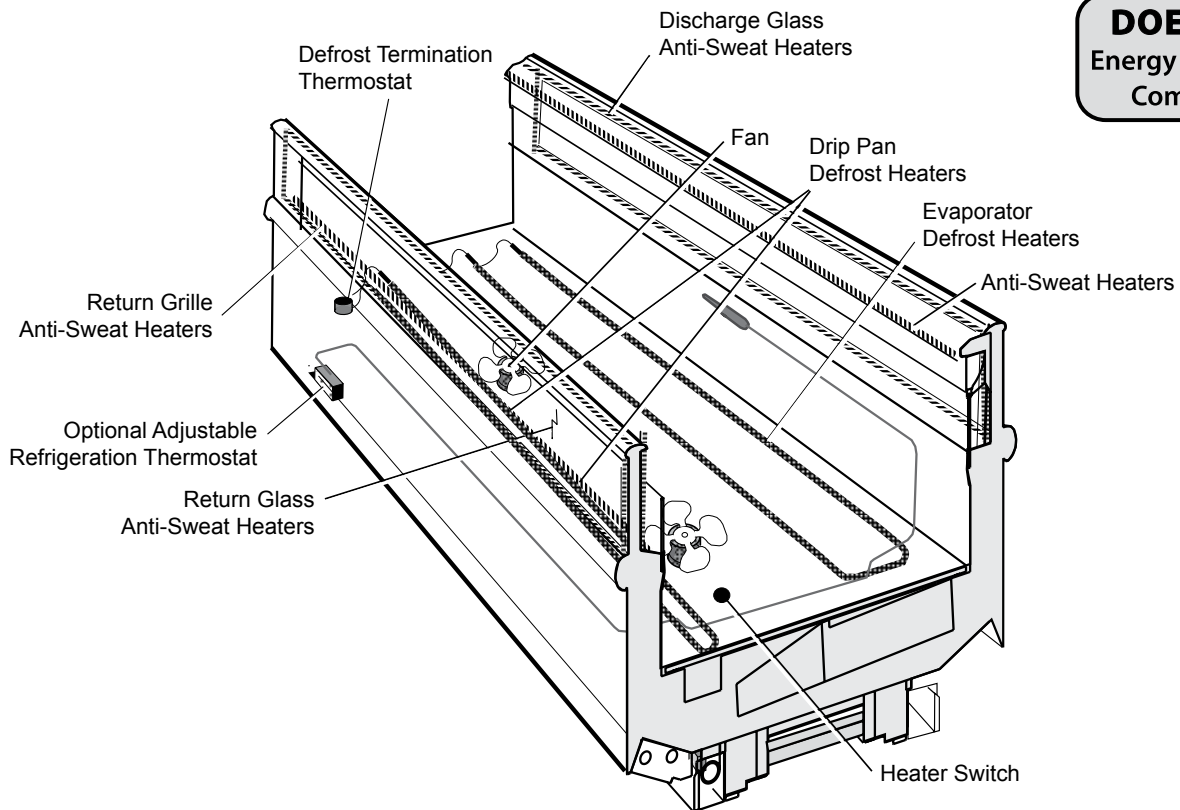
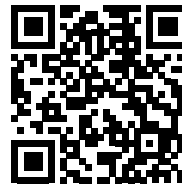


DOE 2017
Energy Efficiency
Compliant



NSF Certification

This merchandiser model is manufactured to meet NSF/ANSI (National Sanitation Foundation) Standard #7 requirements for construction, materials and cleanability.



Scan the QR code on your mobile device to access additional product information or order parts.

Parts may also be ordered at:

parts.husmann.com

Call toll free: 1.855.487.7778

We reserve the right to change or revise specifications and product design in connection with any feature of our products. Such changes do not entitle the buyer to corresponding changes, improvements, additions or replacements for equipment previously sold or shipped.

Data sheet-Excel-FNG

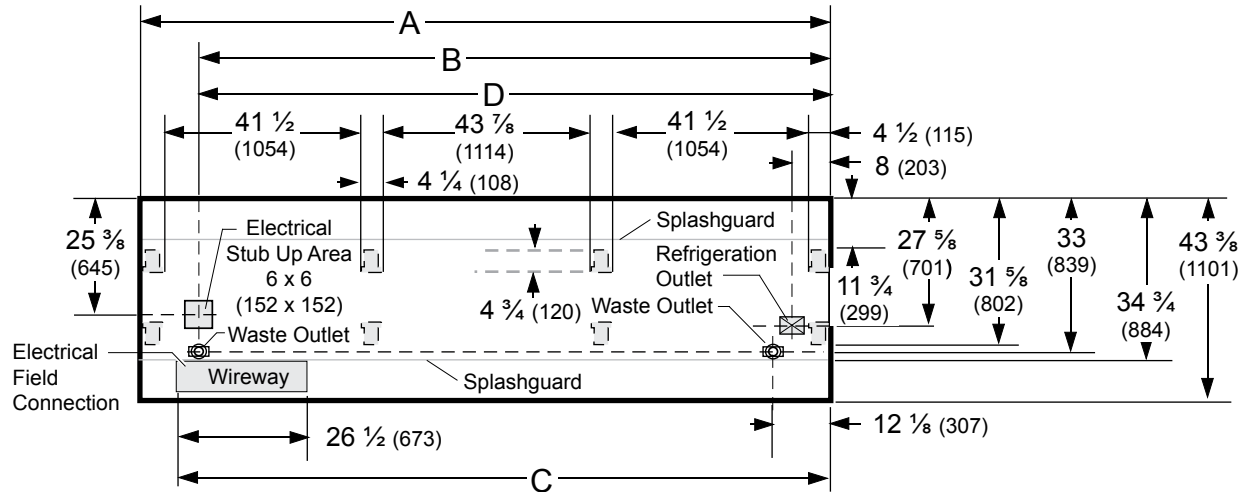
Note: Revision L: Added 4 foot data. Other changes marked by bar, underline or circle.

Engineering Plan Views

PHYSICAL DATA	
Merchandiser Drip Pipe (in.)	1 1/4
Merchandiser Liquid Line (in.)	3/8
Merchandiser Suction Line (in.)	5/8

Narrow Island Frozen Food

Dimensions shown as inches & (mm).



NOTE: Case-to-Case Electrical Connections are made IN FRONT OF SPLASHGUARD.

FRONT

	4 ft	6 ft	8 ft	10 ft	12 ft
General					
(A) Case Length (without ends or partitions) <i>(Each end and insulated partition adds 2 in. (51 mm) to case line up.)</i>	48 1/4 (1226)	73 3/4 (1873)	96 3/8 (2448)	120 1/2 (3061)	144 1/2 (3670)
Maximum O/S dimension of case back to front <i>(includes bumper)</i>	43 3/8 (1101)	43 3/8 (1101)	43 3/8 (1101)	43 3/8 (1101)	43 3/8 (1101)
Back of case to front of splashguard	34 3/4 (884)	34 3/4 (884)	34 3/4 (884)	34 3/4 (884)	34 3/4 (884)
Back of case to O/S edge of front leg	31 5/8 (802)	31 5/8 (802)	31 5/8 (802)	31 5/8 (802)	31 5/8 (802)
Distance between edges of external and center legs	NA	30 1/4 (768)	41 1/2 (1054)	29 1/2 (749)	41 1/2 (1054)
Distance between edges of center legs	NA	NA	NA	43 7/8 (1114)	43 7/8 (1114)
Distance between front legs and splashguard	3 1/8 (82)	3 1/8 (82)	3 1/8 (82)	3 1/8 (82)	3 1/8 (82)
Electrical Service (Electrical Field Wiring connection point)					
(B) RH End of case to center of stub up area	36 1/8 (9018)	61 5/8 (1565)	84 1/4 (2141)	108 3/8 (2753)	132 3/8 (3363)
Back of case to center of stub up area	25 3/8 (645)	25 3/8 (645)	25 3/8 (645)	25 3/8 (645)	25 3/8 (645)
Length of electrical wireway	26 1/2 (673)	26 1/2 (673)	26 1/2 (673)	26 1/2 (673)	26 1/2 (673)
(C) RH End of case to LH end of wireway	40 1/2 (1029)	67 1/2 (1715)	90 1/8 (2289)	114 1/4 (2902)	138 1/4 (3511)
Waste Outlets (One each end)					
(D) RH End of case to the center of LH waste outlet	36 1/8 (918)	61 5/8 (1565)	84 1/4 (2141)	108 3/8 (2753)	132 3/8 (3363)
RH End of case to the center of RH waste outlet	12 1/8 (307)	12 1/8 (307)	12 1/8 (307)	12 1/8 (307)	12 1/8 (307)
Back O/S of case to center of waste outlets	33 (839)	33 (839)	33 (839)	33 (839)	33 (839)
Schedule 40 PVC drip pipe	1 1/4 (32)	1 1/4 (32)	1 1/4 (32)	1 1/4 (32)	1 1/4 (32)
Refrigeration Outlet					
Back of case to center of refrigeration outlet	27 5/8 (701)	27 5/8 (701)	27 5/8 (701)	27 5/8 (701)	27 5/8 (701)
RH end of case to center of refrigeration outlet	8 (203)	8 (203)	8 (203)	8 (203)	8 (203)

Narrow Island Display with Glass Walls



Hussmann refrigerated merchandisers configured for sale for use in the United States meet or surpass the requirements of the DOE 2017 energy efficiency standards.

Excel FNG
Low / Medium Temperature

REFRIGERATION DATA§

Note: This data is based on store temperature and humidity that does not exceed 75°F and 55% R.H.

	MED	FF	IC
Discharge Air (°F)	+24	-12	-22
Evaporator (°F)	+19	-20	-30
Unit Sizing (°F)	+17	-23	-33

§ Average evaporator temperature shown. Use dew point for high glide refrigerants for unit sizing. Care should be taken to use the dew point in PT tables for measuring and adjusting superheat. Adjust evaporator pressure as needed to maintain discharge air temperature shown.

<i>Btu/hr/ft</i>	MED	FF	IC
Parallel	295	460	470
Conventional	305	480	490

DEFROST DATA

	MED	FF	IC
Frequency (hr)	24	24	24
Defrost Water (lb/ft/day)	1.1	1.05	0.9

(± 15% based on case configuration and product loading).

<i>ELECTRIC</i>	MED	FF	IC
Temp Term (°F)	48	48	48
Failsafe (minutes)	60	60	60

<i>GAS</i>	MED	FF	IC
Duration (minutes)	NA	15	18

OFFTIME Not Recommended

Standard Defrost Thermostat

Close on rise: close 48°F — open 33°F

CONVENTIONAL CONTROLS

Low Pressure Backup Control — CI/CO *

MED	+12°F / +2°F
FF	-17°F / -29°F
IC	-27°F / -39°F

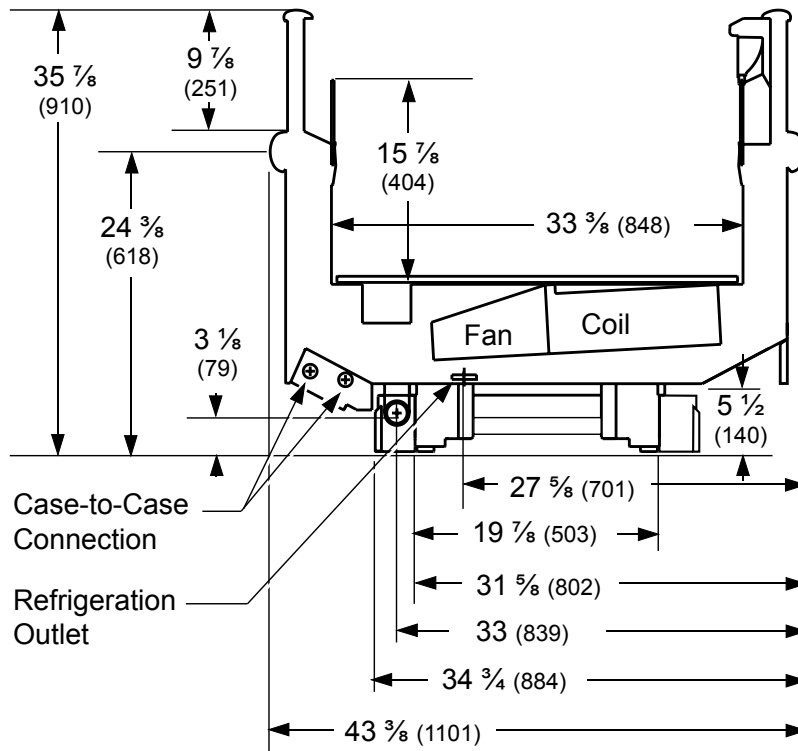
Indoor Unit Only, Pressure Defrost Termination*

Not Recommended

*Use a Temperature Pressure Chart to determine PSIG conversions.



Dimensions shown as inches & (mm).



Estimated Charge (lb)**

4 ft	1.0
6 ft	1.5
8 ft	2.0
10 ft	2.5
12 ft	3.0

**This is an average for all refrigerant types. Actual refrigerant charge may vary by approximately half a pound.

Length Added to Lineup by Each

End or Partition (in.) 2

NSF Certification

This merchandiser model is manufactured to meet NSF/ANSI (National Sanitation Foundation) Standard #7 requirements for construction, materials & cleanability.

Excel FNG Low / Medium Temperature

Electrical Data

	4 ft	6 ft	8 ft	10 ft	12 ft					
Number of Fans – 4W Evaporator	1	1	2	2	2					
	Amperes					Watts				
	4 ft	6 ft	8 ft	10 ft	12 ft	4 ft	6 ft	8 ft	10 ft	12 ft
Evaporator Fans										
120V 50/60Hz Standard Energy Efficient	0.12	0.12	0.24	0.24	0.24	8	8	16	16	16
230V 50/60Hz Standard Energy Efficient	0.06	0.06	0.12	0.12	0.12	8	8	16	16	16
230V 60Hz Export	0.15	0.15	0.30	0.30	0.30	24	24	48	48	48
230V 50Hz Export	0.18	0.18	0.36	0.36	0.36	27	27	54	54	54
Anti-sweat Heaters (on fan circuit)										
120V 50/60Hz Standard	0.63	0.65	0.87	1.07	1.30	53	78	104	128	156
230V 50/60Hz Export	0.33	0.34	0.45	0.56	0.68	53	78	104	128	156
Minimum Circuit Ampacity										
120V 50/60Hz Standard Energy Efficient	0.76	0.97	1.31	1.51	1.74					
230V 50/60Hz Standard Energy Efficient	0.49	0.60	0.77	0.88	1.00					
230V 60Hz Export	0.58	0.69	0.95	1.06	1.18					
230V 50Hz Export	0.61	0.72	1.01	1.12	1.24					
Maximum Over Current Protection 120V	20	20	20	20	20					
Maximum Over Current Protection 230V	15	15	15	15	15					
Return Glass Anti-sweat Heaters										
120V 50/60Hz Standard	0.04	0.06	0.08	0.11	0.11	5	7	9	13	13
230V 50/60Hz Export	0.02	0.03	0.04	0.06	0.06	5	7	9	13	13
Discharge Glass Anti-sweat Heaters										
120V 50/60Hz Standard	0.42	0.35	0.46	0.66	0.66	51	42	55	79	79
230V 50/60Hz Export	0.22	0.18	0.24	0.34	0.34	51	42	55	79	79
208V Electric Defrost	4.4	6.54	7.69	9.61	11.54	910	1360	1600	2000	2400
230V Export Electric Defrost	3.8	5.91	6.96	8.70	10.43	800	1360	1600	2000	2400
120V Koolgas Defrost	0.92	1.33	1.67	2.50	3.33	110	160	200	300	400
208V Koolgas Defrost	0.53	0.77	0.96	1.44	1.92	110	160	200	300	400
230V Koolgas Defrost	0.59	0.85	1.06	1.59	2.12	135	196	244	366	488
Standard Lighting										
None										

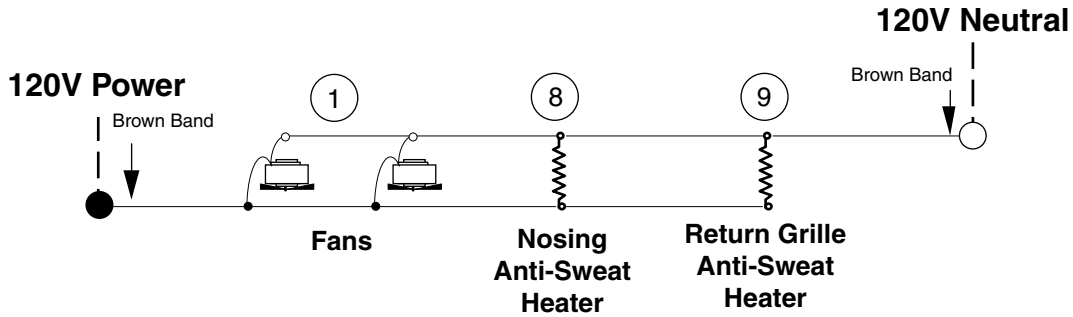
Product Data

<i>Recommended Usable Cube</i> ¹ (Cu Ft/Ft)	3.69 ft ³ /ft (0.34 m ³ /m)
<i>AHRI Total Display Area</i> ² (Sq Ft/Ft)	3.35 ft ² /ft (1.02 m ² /m)
<i>Shelf Area</i> ³ (Sq Ft/Ft)	2.79 ft ² /ft (0.85 m ² /m)

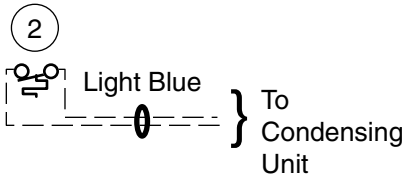
- ¹ AHRI Refrigerated Volume less shelving and other unusable space: Refrigerated Volume/Unit of Length, ft³/ft [m³/m]
- ² Computed using AHRI 1200 standard methodology: Total Display Area, ft² [m²]/Unit of Length, ft [m]
- ³ Shelf surface area is composed of bottom deck plus standard shelf complement, as shown in the Hussmann *Product Reference Guide*. The standard shelf complement for this model is NONE.

ESTIMATED SHIPPING WEIGHT ⁴					
Case	<i>4 ft</i>	<i>6 ft</i>	<i>8 ft</i>	<i>12 ft</i>	Solid End
					<i>(each)</i>
lb (kg)	600 (272)	800 (363)	1000 (454)	1200 (544)	50 (23)
⁴ Actual weights will vary according to optional kits included.					

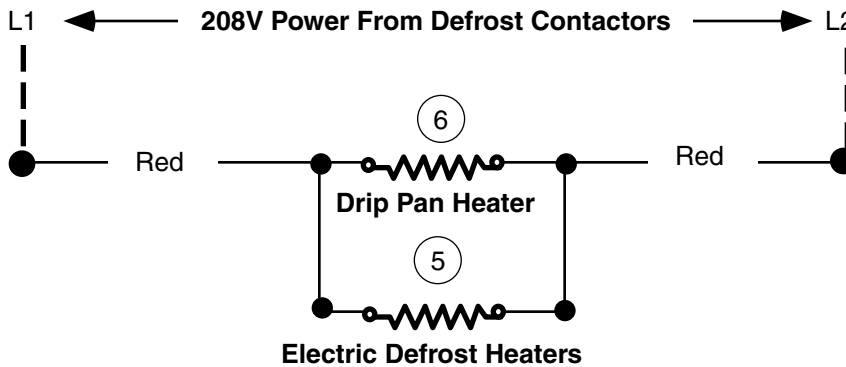
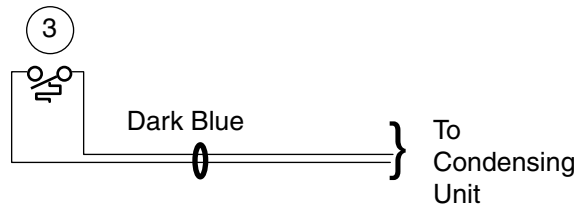
Electric Defrost – Standard



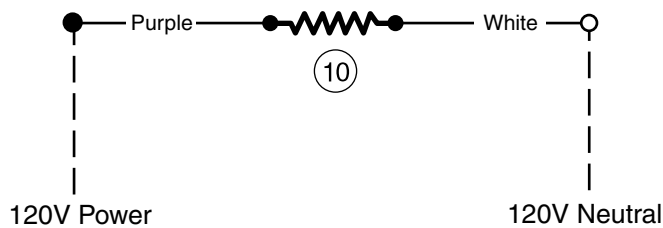
Refrigeration Thermostat (Optional)



Defrost Termination Thermostat



Return Glass Anti-Sweat Heater

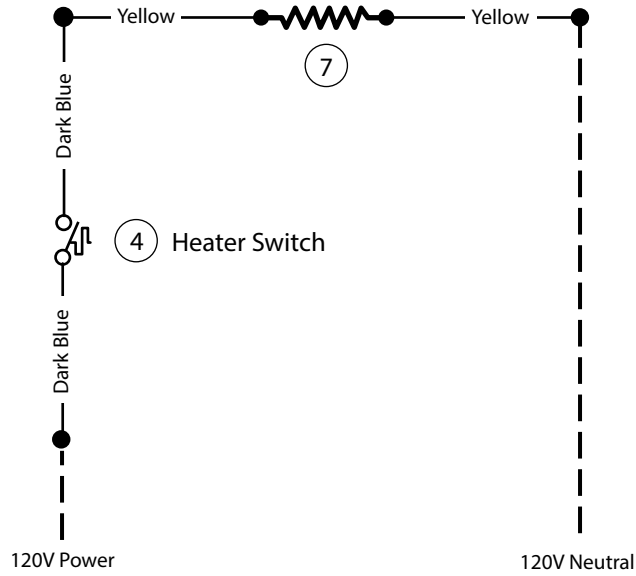


WARNING

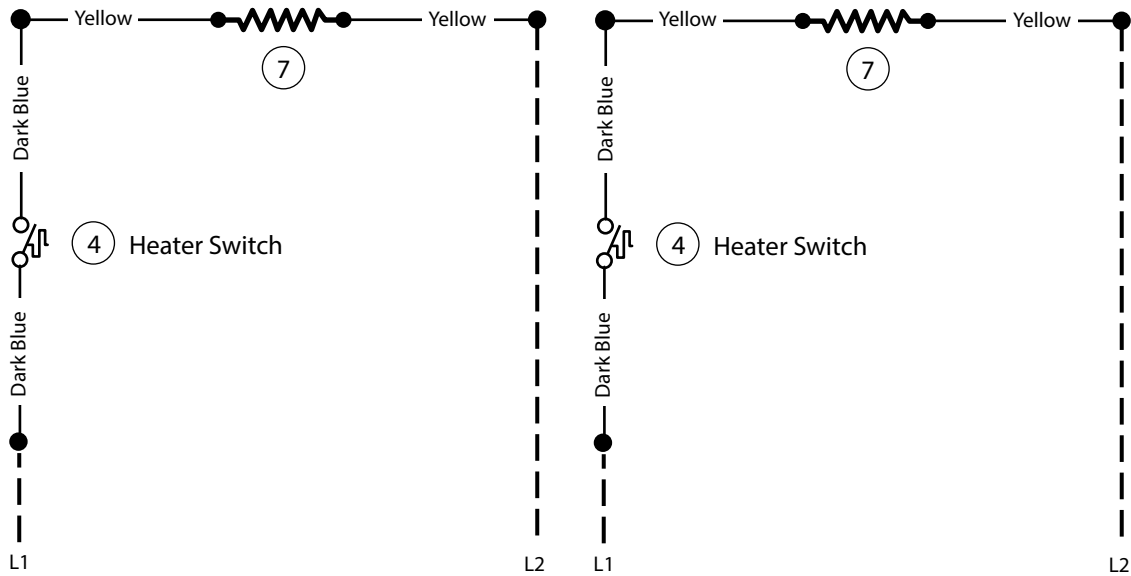
All components must have mechanical ground, and the merchandiser must be grounded.
 Circled Number = Parts List Item Numbers

Gas Defrost – Optional

120V Drip Pan Heater — Koolgas Only



208V/230V Drip Pan Heater — Koolgas Only



WARNING

All components must have mechanical ground, and the merchandiser must be grounded.
Circled Number = Parts List Item Numbers