

# HUSSMANN®



## Freedom Line RFLN

with INNOVATOR Doors  
or INNOVATOR III Doors

Low Temperature

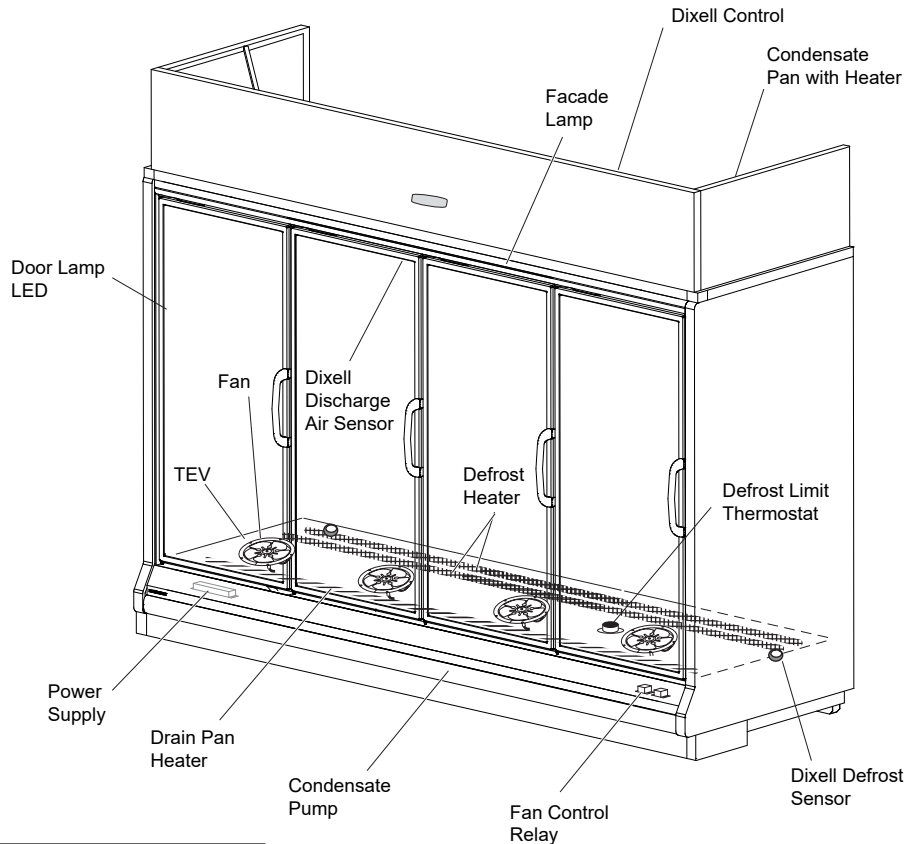
Technical Data Sheet  
P/N 0537768\_M

NSF® Certified

April 2020

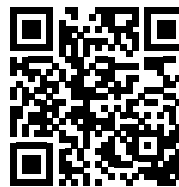
**DOE 2017**  
Energy Efficiency  
Compliant

**Freedom Line merchandisers are top mount  
refrigeration ready**



**Warning:**  
Terminal block  
**NOT** for  
case-to-case  
wire connection!

*Refer to INNOVATOR REACH-IN GLASS DOOR  
INSTALLATION AND SERVICE manual, PIN  
0425683, for Innovator, and Innovator II door  
and frame replacement parts.*



Scan the QR code on your mobile device  
to access additional product information  
or order parts.

Parts may also be ordered at:

[parts.hussmann.com](http://parts.hussmann.com)

Call toll free: 1.855.487.7778

We reserve the right to change or revise specifications and product design in connection with any feature of our products. Such changes do not entitle the buyer to corresponding changes, improvements, additions or replacements for equipment previously sold or shipped.

Note: Revision M: reformatted data sheet per updated requirements, updated estimated charges, electrical, product data and wiring diagrams.

Datasheet - Freedom Line RFLN

©2020 HUSSMANN CORPORATION • BRIDGETON, MO 63044-2483 U.S.A.  
U.S. & CANADA 1-800-922-1919 • MEXICO 1-800-890-2900 • WWW.HUSSMANN.COM

Spanish P/N 0537769

# Engineering Plan Views

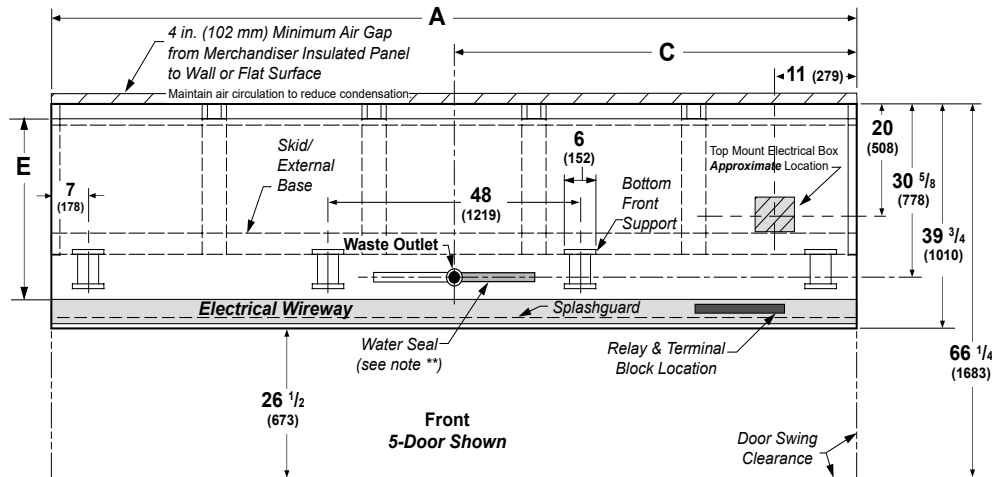
Reach-In  
1, 2, 3, 4 & 5 Door


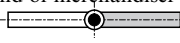
## Freedom Line RFLN - RFMN Plan View

PHYSICAL DATA	
Merchandiser Drip Pipe (in.)	1 1/4
Merchandiser Liquid Line (in.)	3/8
Merchandiser Suction Line (in.)	5/8

Dimensions shown as inches and (mm).

### Freedom Line — Standard Narrow Footprint Plan View 1, 2, 3, 4 & 5 Door



General	1 Dr	2 Dr	3 Dr	4 Dr	5 Dr
<b>(A) Merchandiser Length</b>	31 1/2 (800)	62 (1575)	92 1/2 (2350)	122 7/8 (3121)	153 3/8 (3896)
**NOTE: Each solid end adds approximately 2 3/8 in (60 mm) to length of line up; each partition add approximately 2 3/4 in (70 mm); case to case joints can add approximately 1/8 in (3 mm) for gasket material.					
Maximum O/S dimension of merchandiser back to front ***	39 3/4 (1010)	39 3/4 (1010)	39 3/4 (1010)	39 3/4 (1010)	39 3/4 (1010)
*** Add 26 1/2 in. (673 mm) for door swing.					
Back of merchandiser to rear of splashguard	35 7/8 (911)	35 7/8 (911)	35 7/8 (911)	35 7/8 (911)	35 7/8 (911)
Width of Skid rail	3 3/4 (95)	3 3/4 (95)	3 3/4 (95)	3 3/4 (95)	3 3/4 (95)
Width of Bottom Front Support	6 (152)	6 (152)	6 (152)	6 (152)	6 (152)
Stub-up area between front support and splashguard	3 1/8 (79)	3 1/8 (79)	3 1/8 (79)	3 1/8 (79)	3 1/8 (79)
<b>Electrical Service</b> (dimensions are approximate)					
<b>(B) RH end of merchandiser to center of Electrical Service Area</b>	11 (279)	11 (279)	11 (279)	11 (279)	11 (279)
Back O/S of merchandiser to center of Electrical Service Area	20 (508)	20 (508)	20 (508)	20 (508)	20 (508)
* NOTE: Electrical Field Wiring Connection Point is at top of merchandiser.					
<b>Waste Outlet</b> 					
<b>(C) Right end of merchandiser to center of waste outlet</b>	15 3/4 (400)	23 7/8 (606)	54 1/4 (1378)	46 1/4 (1175)	76 5/8 (1946)
<b>Water Seal</b> 					
Edge of water seal to center of waste outlet	13 (330)	13 (330)	13 (330)	13 (330)	13 (330)
Schedule 40 PVC drip pipe	1 1/4 (32)	1 1/4 (32)	1 1/4 (32)	1 1/4 (32)	1 1/4 (32)
** NOTE: Field installed water seal outlets, tees, and connectors are shipped with merchandiser.					
<b>Refrigeration Outlet</b>					
<b>(D) RH end of merchandiser to center of refrigeration interface</b>	5 3/8 (136)	5 3/8 (136)	5 3/8 (136)	5 3/8 (136)	5 3/8 (136)
Back O/S of merchandiser to center of refrigeration interface	49 5/8 (1260)	49 5/8 (1260)	49 5/8 (1260)	49 5/8 (1260)	49 5/8 (1260)
* NOTE: Refrigeration interface is at top of merchandiser.					
Outside bottom front supports from end of merchandiser	7 (178)	7 (178)	7 (178)	7 (178)	7 (178)
Center bottom front support from Centerline	24 (610)	24 (610)	24 (610)	24 (610)	24 (610)
Distance between Center and Outside supports will vary					
<b>(E) Depth when disassembled for door entry</b>	35 1/2 (902)	35 1/2 (902)	35 1/2 (902)	35 1/2 (902)	35 1/2 (902)

**Freedom Line** Narrow Footprint Reach-in  
Top-Mount-Refrigeration Ready  
1, 2, 3, 4 and 5 Door Models

Standard Reach-in configuration consists of Innovator I doors, energy efficient fan motors, and LED vertical lighting.



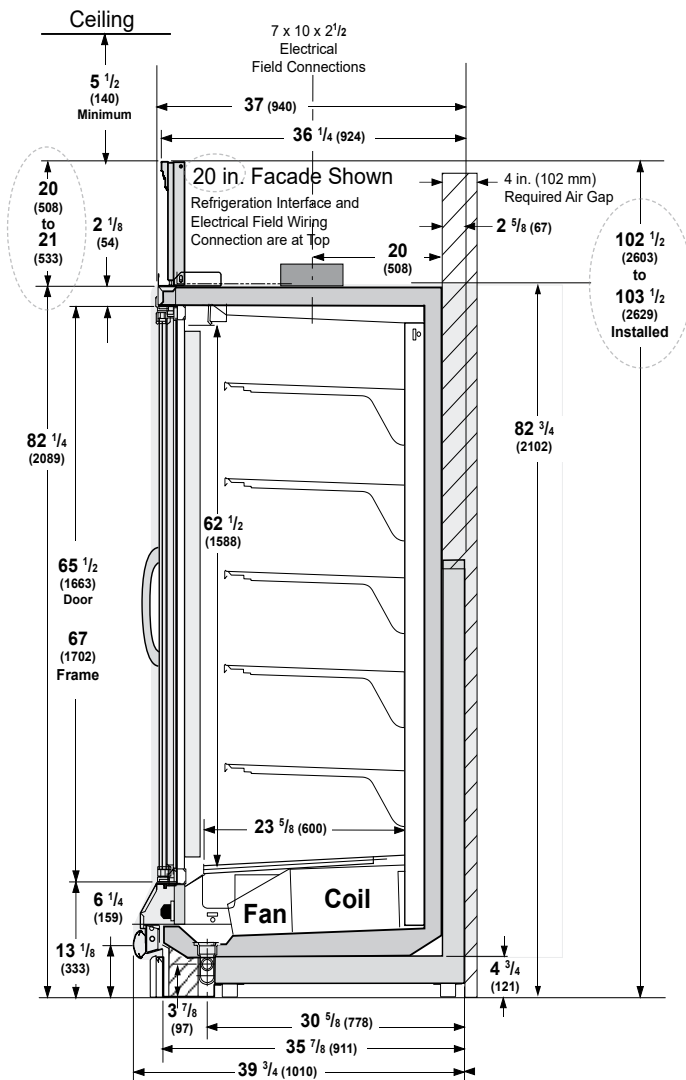
Hussmann refrigerated merchandisers configured for sale for use in the United States meet or surpass the requirements of the DOE 2017 energy efficiency standards.

Provide adequate clearance for air circulation at rear to reduce condensation.

Dimensions shown as inches and (mm).

Note: An optional Louvered Facade Panel kit is available that will allow for the top spacing minimum clearance of 3 inches (76 mm).

Note: Facade is field-installed. Electrical connection box, external supports, door handle and front raceway may be removed to facilitate passage through door way.



**Freedom Line RFLN**  
With Innovator Doors or Innovator III Doors  
Low Temperature

**REFRIGERATION DATA§**

Note: This data is based on store temperature and humidity that does not exceed 75°F and 55% R.H.

	FF	IC	AHRI Rating*
Discharge Air (°F)	-5	-12	-2
Evaporator (°F)	-11	-19	-7
Unit Sizing (°F)	-14	-22	-10

\*With door A/S controller

**Btu/hr/Door**

	FF	IC	AHRI Rating*
<b>INNOVATOR</b>			
Parallel	955	1065	910
Conventional	970	1085	940
<b>INNOVATOR III</b>			
Parallel	935	1035	
Conventional	955	1055	

§ Average evaporator temperature shown. Use dew point for high glide refrigerants for unit sizing. Care should be taken to use the dew point in PT tables for measuring and adjusting superheat. Adjust evaporator pressure as needed to maintain discharge air temperature shown.

**DEFROST DATA**

	FF	IC
Frequency (hr)	24	24
Defrost Water (lb/Dr/day)	1.2	1.2

(± 15% based on merchandiser configuration and product loading.)

<b>ELECTRIC</b>	FF	IC
Temp Term (°F)	48°	48°
Failsafe (minutes)	45	45

**GAS** Not Available  
**OFFTIME** Not Recommended

Refrigeration data continued on page 4.

**NSF Certification**

This merchandiser model is manufactured to meet NSF/ANSI (National Sanitation Foundation) Standard #7 requirements for construction, materials & cleanability.

<b>Freedom Line RFLN</b> With Innovator Doors or Innovator III Doors Low Temperature
--

**REFRIGERATION DATA CONTINUED**

**CONVENTIONAL CONTROLS**

	<b>Cut In</b>	<b>Cut Out</b>
<b>HPC (psig)</b>	320	395
<b>LPC (psig)</b>	15	5

**Working Charge<sup>1</sup>**

*Total working charge with recommended Hussmann Air-Cooled condensing unit installed:*

1 dr	2 lbs, 5 oz	/	1.04 kg
2 dr	6 lbs	/	2.72 kg
3 dr	6 lbs, 8 oz	/	2.95 kg
4 dr	6 lbs, 14 oz	/	3.13 kg
5 dr	7 lbs, 6 oz	/	3.36 kg

*Total working charge with recommended HMDSLMT Water-Cooled condensing unit installed:*

1 dr	1 lbs, 14 oz	/	0.86 kg
2 dr	2 lbs, 6 oz	/	1.09 kg
3 dr	3 lbs, 8 oz	/	1.59 kg
4 dr	4 lbs	/	1.81 kg
5 dr	6 lbs, 10 oz	/	2.99 kg

<sup>1</sup> The total refrigerant charge includes the case and condensing unit. Both ship pre-charged with a portion of the total refrigerant.

**Husmann recommends against frame heater cycling with *Innovator doors or Innovator III doors* to prevent door seals from freezing to the frames and tearing.**

***Freedom Line RFLN***  
 With Innovator Doors or Innovator III Doors  
 Low Temperature

**Electrical Data**

	1Dr	2Dr	3Dr	4Dr	5Dr					
Number of Fans—12W	1	2	3	4	5					
	Amperes					Watts				
<b>Merchandiser</b>	<b>1Dr</b>	<b>2Dr</b>	<b>3Dr</b>	<b>4Dr</b>	<b>5Dr</b>	<b>1Dr</b>	<b>2Dr</b>	<b>3Dr</b>	<b>4Dr</b>	<b>5Dr</b>
<b>Energy Efficient Evaporator Fan</b>										
120V 50/60Hz Innovator	0.30	0.60	0.90	1.20	1.50	18	36	54	72	90
<b>Door Anti-sweat Heaters (on fan circuit)</b>										
120V 50/60Hz Innovator	0.76	1.50	2.30	3.00	3.80	91	182	273	364	455
120V 50/60Hz Innovator III	0.43	0.9	1.3	1.7	2.2	52	104	156	208	260
<b>Frame Anti-sweat Heaters (on fan circuit)</b>										
120V 50/60Hz Innovator	0.39	0.78	1.18	1.57	1.97	47	94	141	188	236
<b>Heated Condensate Pan</b>	5.0	5.0	5.0	5.0	5.0	600	600	600	600	600
<b>Condensate Pump</b>	1.9	1.9	1.9	1.9	1.9	87	87	87	87	87
<b>Defrost</b>										
Drain Heaters (120V)	1.67	0.63	1.25	2.00	2.57	200	75	150	240	300
208V 1ø Electric Defrost	2.88	6.72	10.08	13.46	16.82	600	1400	2100	2800	3500
<b>Maximum Overcurrent</b>										
Protection Device (MOPD)	20	20	20	20	20					

**ONLY LIGHTING CONFIGURATIONS THAT ARE COMPLIANT WITH THE U.S. DEPT. OF ENERGY (DOE) 2017 REGULATION ARE AVAILABLE FOR SALE FOR USE IN THE U.S.A.**

	1Dr	2Dr	3Dr	4Dr	5Dr	1Dr	2Dr	3Dr	4Dr	5Dr
<b>Standard Vertical LED Lighting</b>										
120V	0.18	0.31	0.46	0.62	0.77	18.5	37.1	55.6	74.2	92.7

† Notes:

1. Single point electrical input for the RFLN Freedom case requires a 208/230V 4 wire electrical connection at the top of the case for the case components, defrost heater, and optional field-installed condensing unit. Defrost heater and condensing unit circuits are non-concurrent loads. To determine the circuit size, use the larger of the two loads - do not add the two loads together.
2. For total electrical circuit requirements refer to the condensing unit datasheet and include all optional components.

*A qualified electrician should perform all wiring in accordance with the NEC code and/or all local codes. Wire sizing must take into account the total distance from the electrical panel to the Freedom case.*

# Freedom Line RFLN

With Innovator Doors or Innovator III Doors  
Low Temperature

## Product Data

<i>Recommended Usable Cube</i> <sup>2</sup> (Cu Ft/Dr)	24.48 ft <sup>3</sup> /Dr (0.69 m <sup>3</sup> /Dr)
<i>AHRI Total Display Area</i> <sup>1</sup> (Sq Ft/Dr)	13.04 ft <sup>2</sup> /Dr (1.21 m <sup>2</sup> /Dr)
<i>Shelf Area</i> <sup>2</sup> (Sq Ft/Dr)	28.50 ft <sup>2</sup> /Dr (2.65 m <sup>2</sup> /Dr)

<sup>1</sup> Computed using AHRI 1200 standard methodology: Total Display Area, ft<sup>2</sup> [m<sup>2</sup>]/Unit of Length, ft [m]

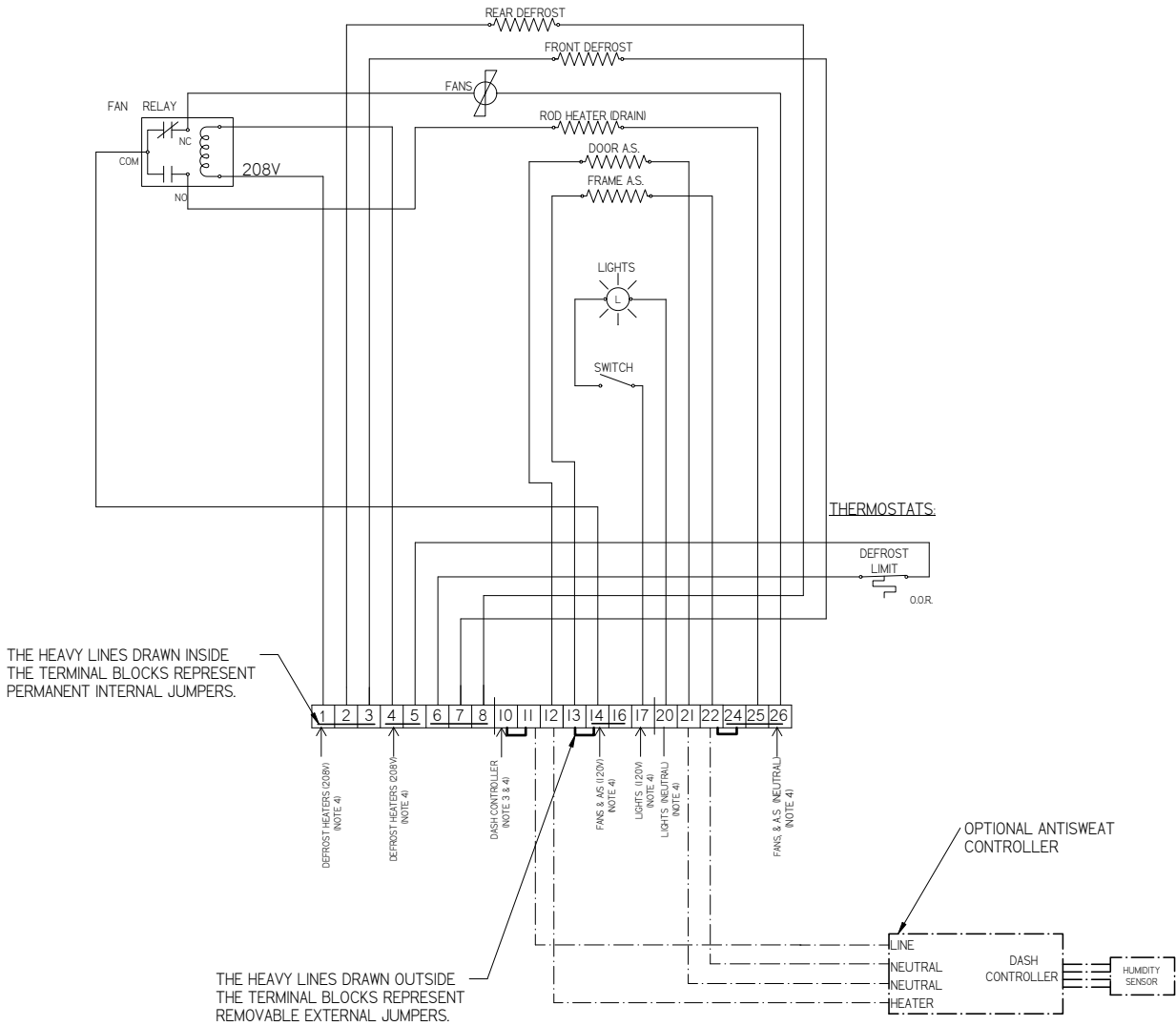
<sup>2</sup> Shelf Surface Area and Recommended Usable Cube are composed of bottom deck plus standard shelf complement, as shown in the Hussmann *Product Reference Guide*. The standard shelf complement for this model is (5) rows of 24-inch shelves.

### ESTIMATED SHIPPING WEIGHT <sup>4</sup>

	<i>1 Dr</i>	<i>2 Dr</i>	<i>3 Dr</i>	<i>4 Dr</i>	<i>5 Dr</i>	<i>Solid End (each)</i>
<b>Standard Freedom Line Merchandiser (18-Inch Facade, no Arch)</b>						
<b>lb (kg)</b>	617 (80)	1085 (492)	1357 (616)	1828 (829)	2230 (1012)	74 (34)

<sup>4</sup> Actual weights will vary according to optional kits included.

**Freedom Line RFLN**  
**With Innovator Doors or Innovator III Doors**  
**Low Temperature**



3055656\_J

**Electric Defrost Sequence - Low Temperature**

1. Power from the defrost relay energizes Defrost Heaters and 208V Evaporator Fan Relay Coil (5). Relay Contacts open the fan circuit and energizes the Drain Pan Heater.
2. When Defrost Termination Thermostat ends defrost period, the defrost relay opens the Defrost Heater and Evaporator Fan Relay Coil Circuits. The Drain Pan Heater goes off and fans are on.

**Freedom Line RFLN**  
 With Innovator Doors or Innovator III Doors  
 Low Temperature

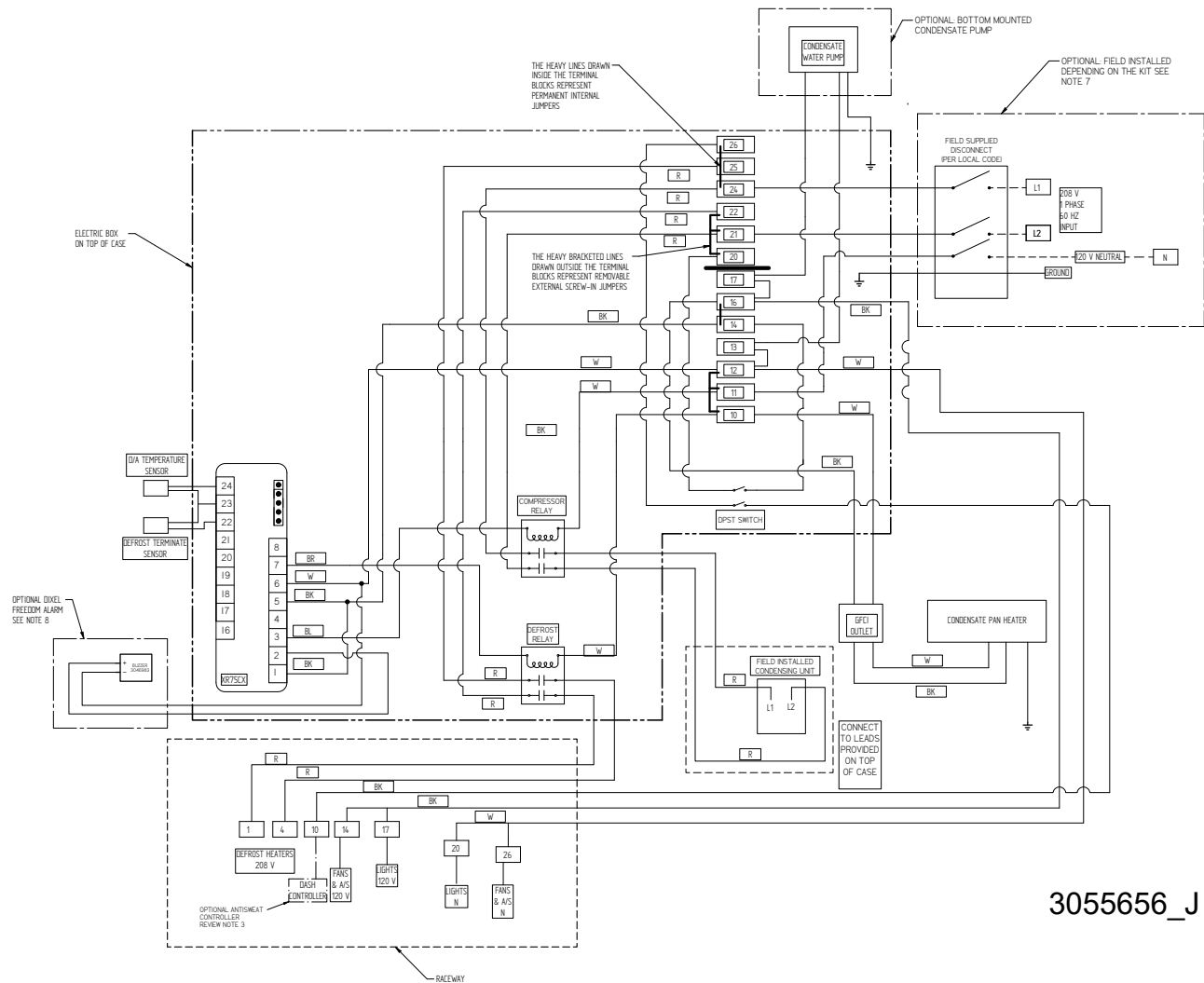
CIRCLED NUMBERS = PARTS LIST ITEM NUMBERS

R = Red P = Purple 2P = Purple (2 Bands)

DB = Dark Blue BK = Black BL = Blue

BR = Brown Y = Yellow OR = Orange W = White

**THESE ARE MARKER COLORS (WIRE MAY VARY).**

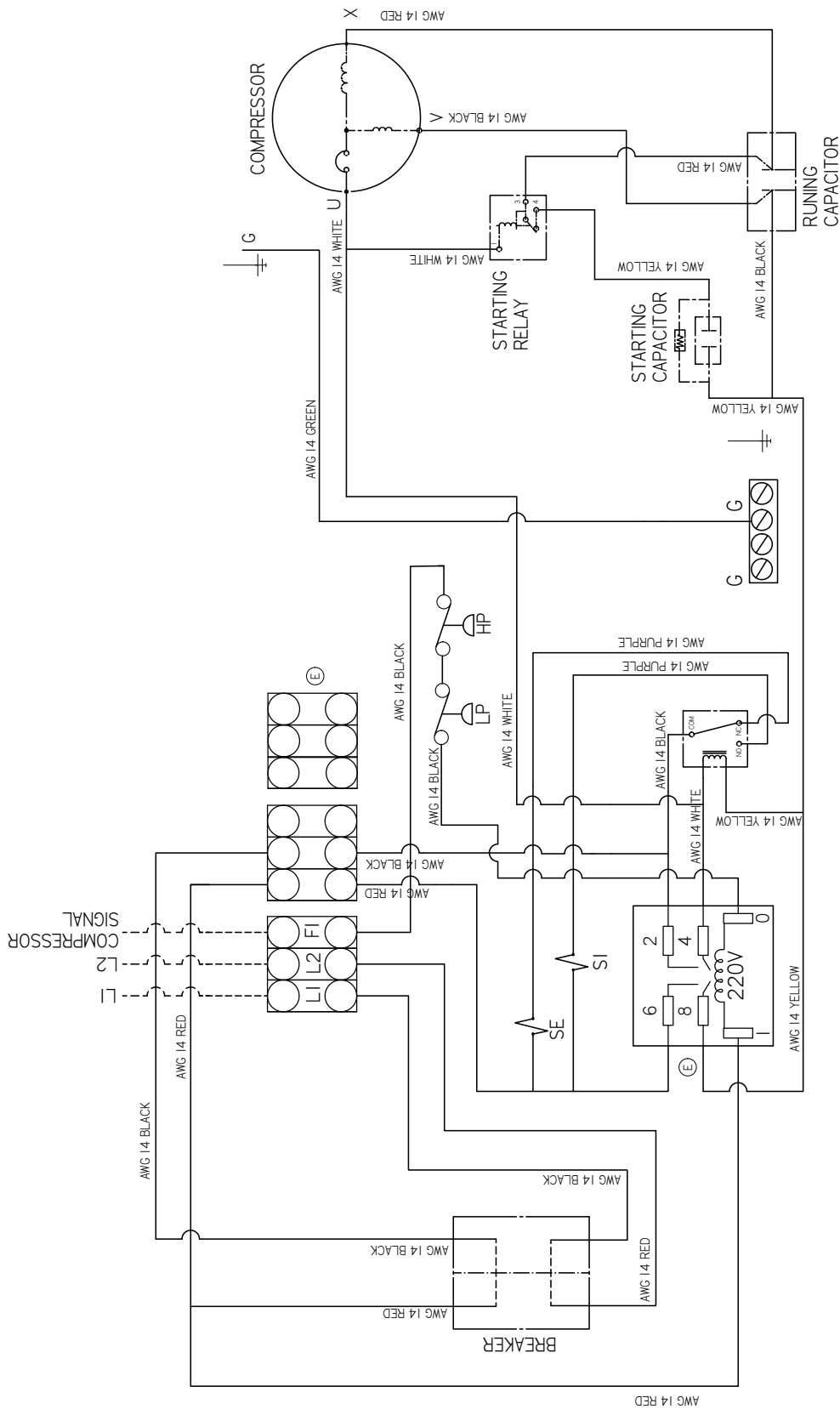


3055656\_J

**Single Point Wiring Diagram**



**Freedom Line RFLN**  
**With Innovator Doors or Innovator III Doors**  
**Low Temperature**

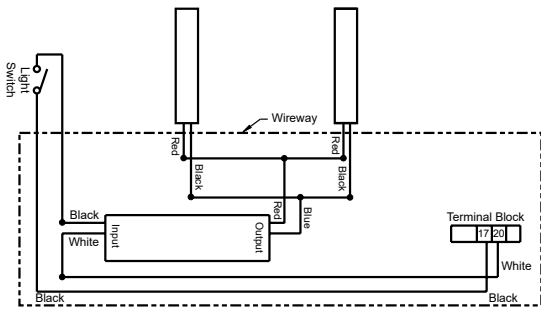


3074737\_E

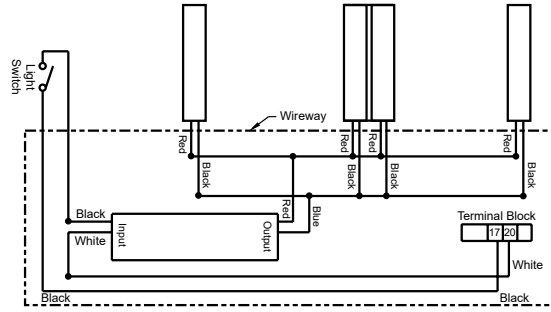
**Dixell Wiring Diagram — HMDSLMT Water Cooled Condensing Units —  
 Low Temperature Reach-in**

**Freedom Line RFLN**  
 With Innovator Doors or Innovator III Doors  
 Low Temperature

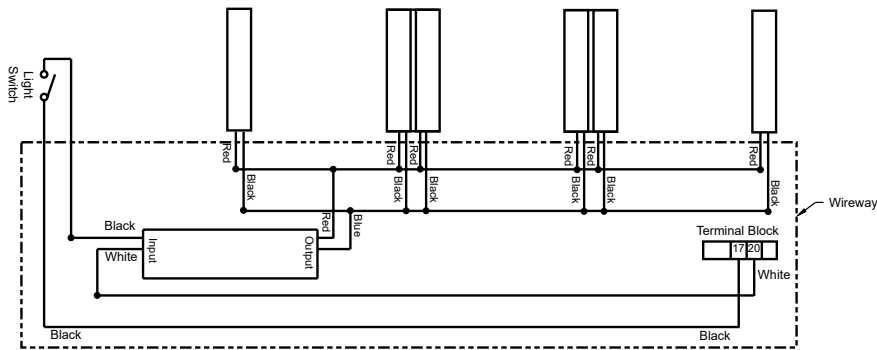
**Standard Vertical Lighting  
 LED Fixtures**



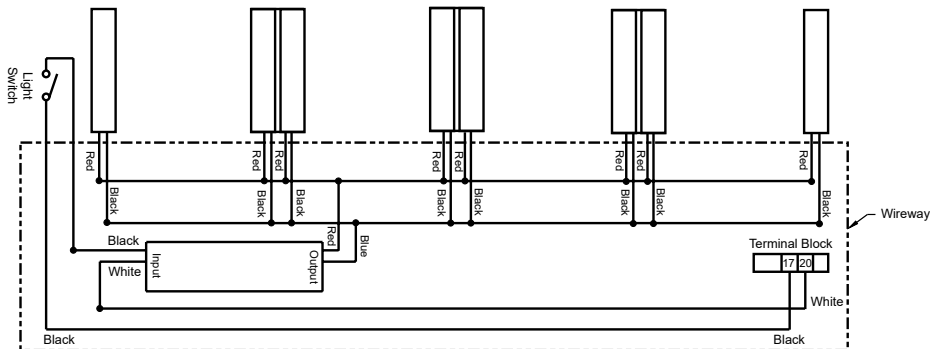
1 Door LED Light Wiring Diagram



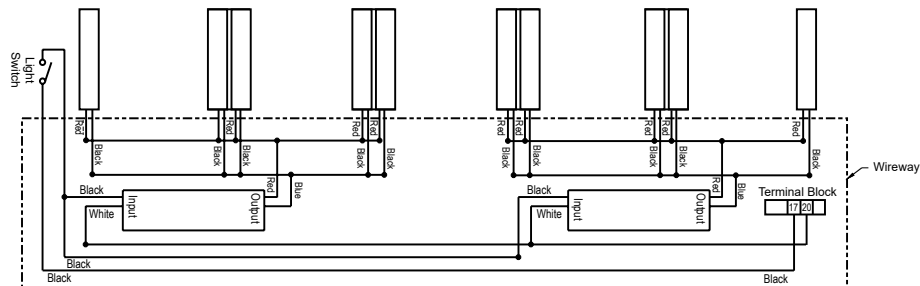
2 Door LED Light Wiring Diagram



3 Door LED Light Wiring Diagram



4 Door LED Light Wiring Diagram



5 Door LED Light Wiring Diagram

**WARNING**

All components must have mechanical ground, and the merchandiser must be grounded.

R = Red Y = Yellow G = Green BL = Blue BK = Black W + White

● = 120V Power ○ = 120V Neutral ⊥ = Field Ground  $\overline{mm}$  = Case Ground