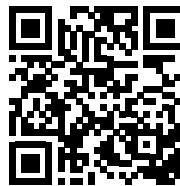


NSF Certification

This merchandiser model is manufactured to meet NSF/ANSI (National Sanitation Foundation) Standard #7 requirements for construction, materials and cleanability.



Scan the QR code on your mobile device to access additional product information or order parts.

Parts may also be ordered at:

parts.husmann.com

Call toll free: 1.855.487.7778

We reserve the right to change or revise specifications and product design in connection with any feature of our products. Such changes do not entitle the buyer to corresponding changes, improvements, additions or replacements for equipment previously sold or shipped.

Note: Revision D: Converted case to R448A and changed the controller to XR75.

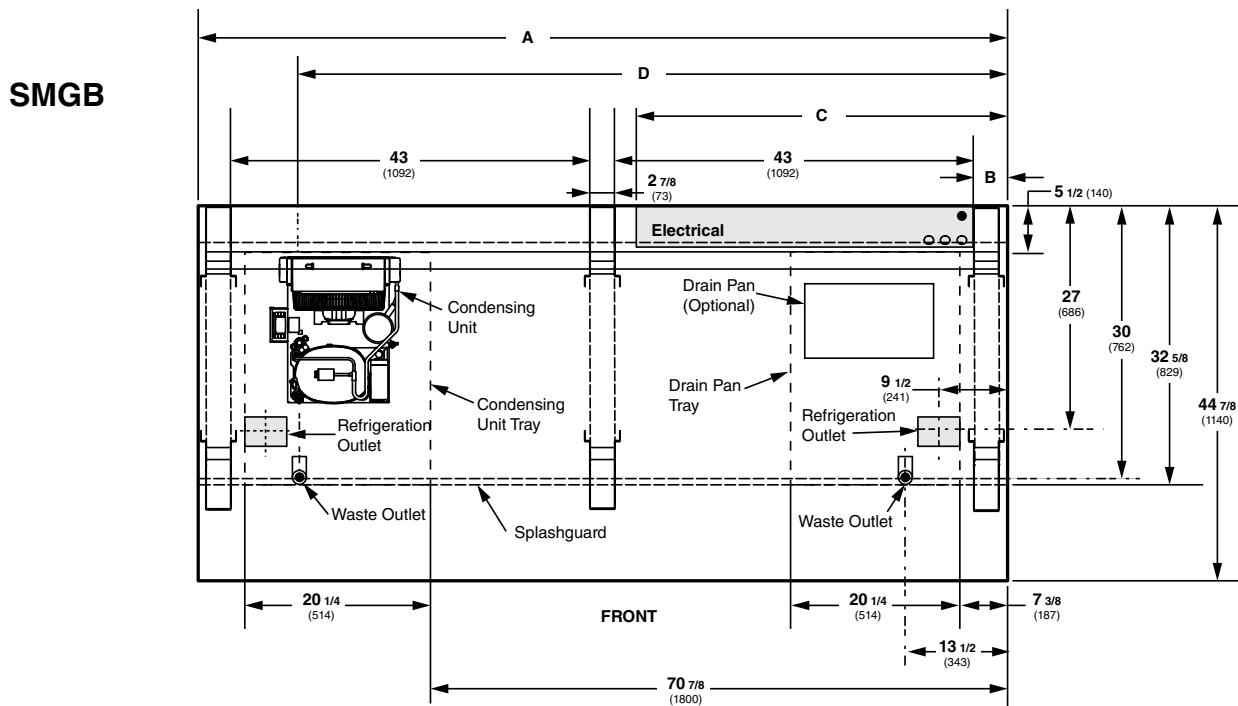
Data sheet-Excel SMGB

Engineering Plan Views

Meat & Delicatessen Double Curved Hinged Glass Models

PHYSICAL DATA	
Merchandiser Drip Pipe (in.)	1 1/2
Merchandiser Liquid Line (in.)	3/8
Merchandiser Suction Line (in.)	5/8

Dimensions shown as in. and (mm).



General

- (A)** Case Length (**NOTE:** Includes one pair ends)
Maximum O/S dimension of case back to front
(*Note: Includes bumper*)
Back of case to front of splashguard
Center of rear legs to center of front legs
Each End and Partition adds 1 1/2 in. (38 mm) to the length of the lineup.

Electrical Service

- (B)** RH end of case to Electrical raceway right edge
(C) RH end of case to Electrical raceway left edge
Back of case to center of knockout

* Electrical Field Wiring Connection Point

Waste Outlet

- (D)** RH End of case to the center of LH waste outlet
RH End of case to the center of RH waste outlet
Back O/S of case to center of waste outlets
Schedule 40 PVC drip pipe

** Field installed water seal outlets, tees, and connectors are shipped with the merchandiser.

Refrigeration Outlet

- Back of case to center of refrigeration outlet
RH end of case to center of refrigeration outlet
Outside diameter of the liquid line
Outside diameter of the suction line

8 ft

99 1/4 (2521)
44 7/8 (1140)

32 5/8 (829)
23 1/2 (598)

4 5/8 (117)
44 5/8 (1133)
1 7/8 (47)

85 3/8 (2169)
13 1/2 (343)
32 1/2 (826)
1 1/4 (32)

27 (686)
9 1/2 (241)
3/8 (9.5)
5/8 (16)

Curved Hinged Glass, Gravity with Blower assist, 3 Display Level



Husmann refrigerated merchandisers configured for sale for use in the United States meet or surpass the requirements of the DOE 2017 energy efficiency standards.

Excel **SMGB**
Meat / Delicatessen

REFRIGERATION DATA

Note: This data is based on store temperature and humidity that does not exceed 75°F and 55% R.H. Schedule defrost at night while lights are off.

	SMGB
Discharge Air (°F)	24
Condensing Unit (hp)	0.50
Condensing Unit Capacity (Btu/hr at std. rating conditions)	5660

DEFROST DATA

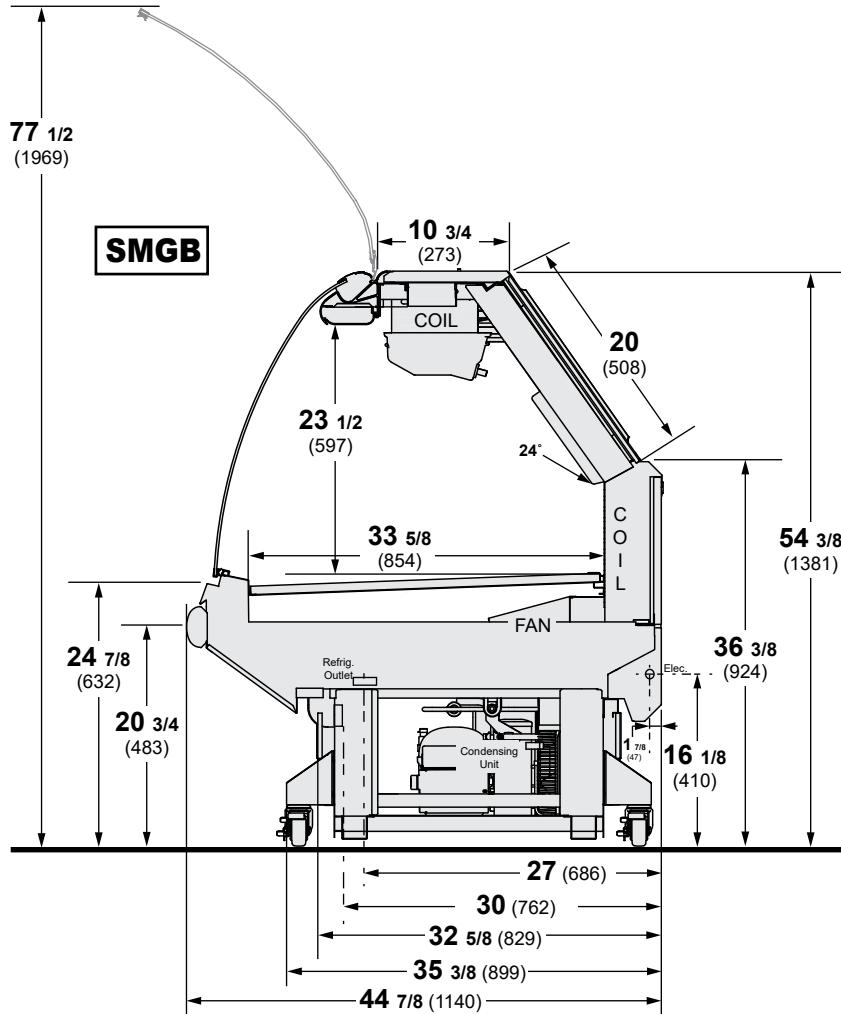
	SMGB
Frequency (hr)	24
Defrost Water (lb/ft/day) (± 15% based on case configuration and product loading).	0.71

	SMGB
OFFTIME	
Failsafe (minutes)	90

PHYSICAL DATA

Refrigerant Charge (R448A)			
8 ft	3.63 lb	58 oz	1.64 kg

Dimensions shown as in. and (mm).



Electrical Data

Number of Fans	8 ft
Refrigeration (120V 60Hz) – 4W	2
Ambient Air Wipe – 15W	2

	Amperes 8 ft	Watts 8 ft
Merchandiser		
Refrigeration Fans		
Standard (120V 60Hz)	0.62	48
Ambient Air Wipe Fans		
High Efficiency (120V 60Hz)	0.4	30
Constant On Anti-sweat Heaters	NA	NA
Cycling Anti-sweat Heaters	NA	NA
Condensing Unit (120V, 1ph, 60Hz)		
Minimum Circuit Ampacity	14.8	
Compressor LRA	54.5	
Compressor RLA	10.5	
Minimum Circuit Ampacity		
With Standard Fans (120V 60Hz)	15.82	
Maximum Over Circuit Protection 120V	20	
Electric Defrost Heaters (208V)	NA	
Gas Defrost Heaters (208V)	NA	
Standard Lighting* (120V 60Hz)	8 ft	8 ft
2 Row Canopy	0.98	116

ONLY LIGHTING CONFIGURATIONS THAT ARE COMPLIANT WITH THE U.S. DEPT. OF ENERGY (DOE) 2012 REGULATION ARE AVAILABLE FOR SALE FOR USE IN THE U.S.A.

Optional Lighting

2 Row Shelves Canopy	0.98	116
1 Row Rear Canopy	0.49	58

115V Lighting Circuit Total = Standard Lighting + Total Optional Lighting + Optional Shelf Lighting

230V Lighting Circuit Total = Multiply 115V Lighting Circuit Total by 0.52 P

Please note: some combinations of fluorescent lights on this case model may not be compliant with DOE 2017 and may not be available to order in the US and Canada. More lighting options are available with LED lights. The Hussmann Product Configurator will not allow lighting options that do not comply with the DOE 2017 standards.

Product Data

<i>Gross Refrigerated Volume</i> ¹ (<i>Cu FtlFt</i>)	3.03 ft ³ /ft (0.28 m ³ /m)
<i>AHRI Total Display Area</i> ² (<i>Sq FtlFt</i>)	3.50 ft ² /ft (1.07 m ² /m)
<i>Shelf Area</i> ³ (<i>Sq FtlFt</i>)	2.8 ft ² /ft (0.86 m ² /m)

¹ AHRI Refrigerated Volume less shelving and other unusable space: Refrigerated Volume/Unit of Length, ft³/ft [m³/m]

² Computed using AHRI 1200 standard methodology: Total Display Area, ft² [m²]/Unit of Length, ft [m]

³ Shelf surface area is composed of bottom deck.

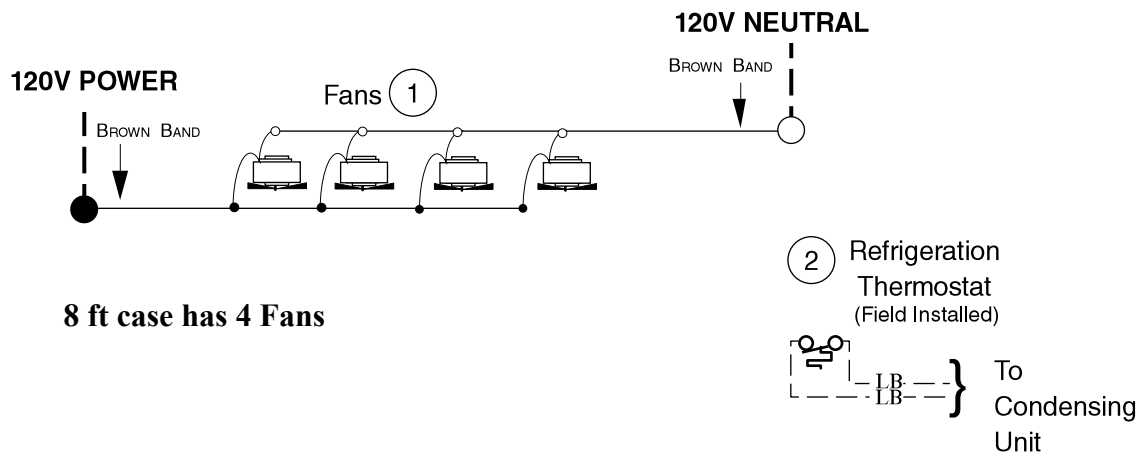
ESTIMATED SHIPPING WEIGHT ⁴

Case		Solid End	Glass / Plastic End
<i>8 ft</i>			<i>(each)</i>
lb (<i>kg</i>)	900 (408)	70 (32)	100 (45)

⁴ Actual weights will vary according to optional kits included.

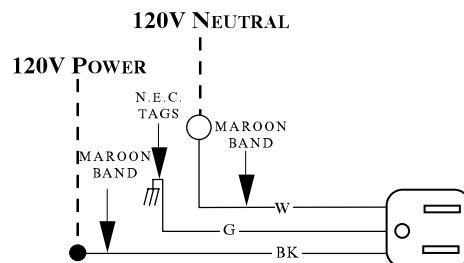
**Fan Wiring
Offtime Defrost**

Fans



Receptacles

Electric Service Receptacle



WARNING

All components must have mechanical ground, and the merchandiser must be grounded.

Circled Numbers = Parts List Item Numbers

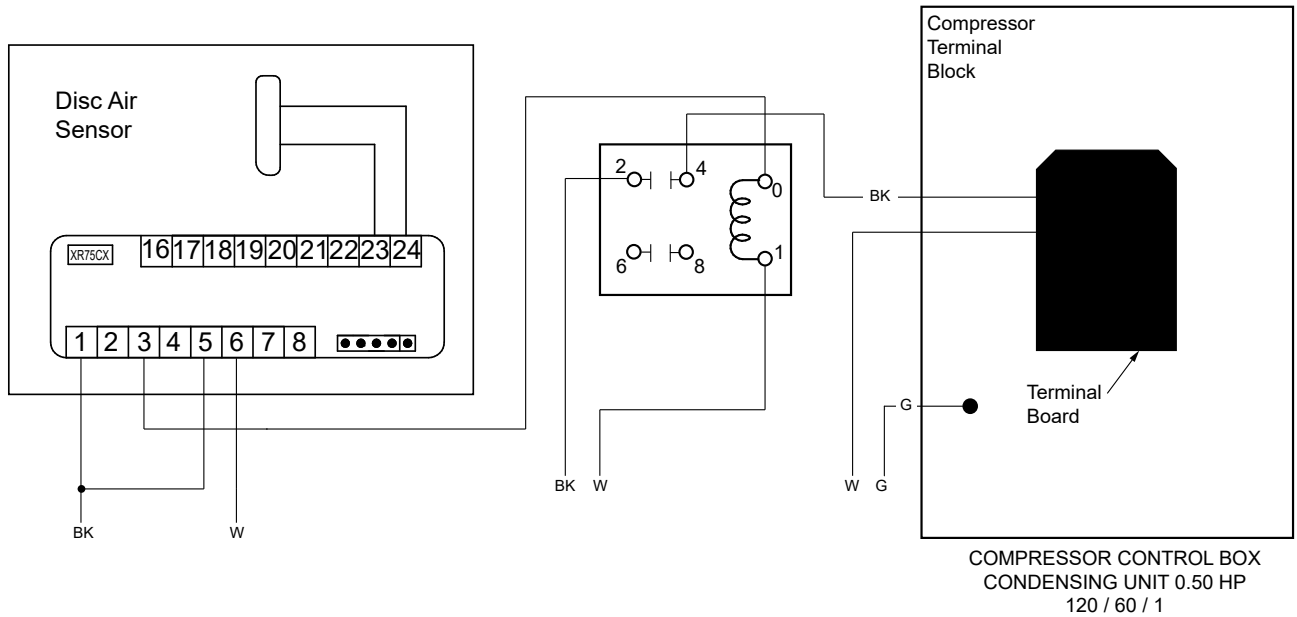
Grayed components in 12 foot models only.

R = Red G = Green BL = Blue LB = Light Blue DB = Dark Blue BK = Black W = White

● = 120V POWER ○ = 120V NEUTRAL ≡ = FIELD GROUND ≡ = CASE GROUND

Control & Condensing Unit Wiring

Excel **SMGB**
Meat / Delicatessen



WARNING

All components must have mechanical ground, and the merchandiser must be grounded.

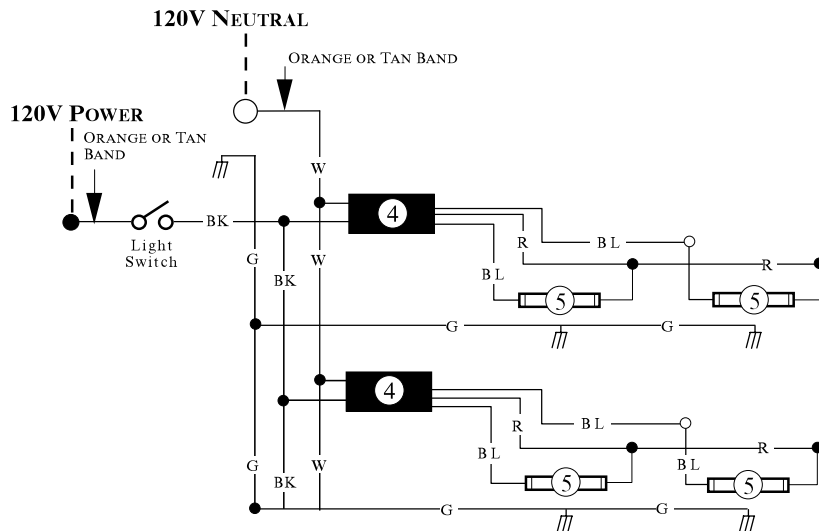
CIRCLED NUMBERS = PARTS LIST ITEM NUMBERS

R = Red Y = Yellow G = Green BL = Blue BK = Black W = White

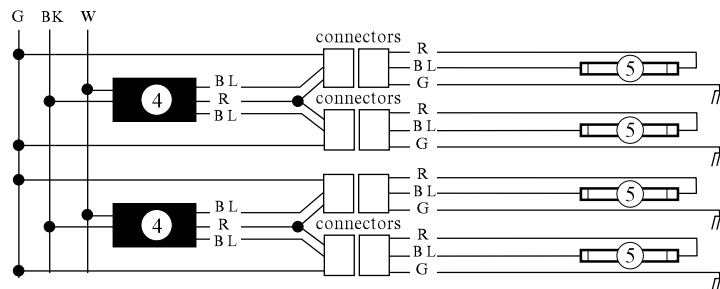
● = 120V POWER ○ = 120V NEUTRAL \perp = FIELD GROUND \parallel = CASE GROUND

Light Circuits

Standard Lighting 2 Row Canopy



Optional Shelf Harness and Light Circuits



WARNING

All components must have mechanical ground, and the merchandiser must be grounded.
Circled Numbers = Parts List Item Numbers

R = Red G = Green BL = Blue BK = Black W = White
● = 120V POWER ○ = 120V NEUTRAL ≡ = FIELD GROUND ≡ = CASE GROUND