

We reserve the right to change or revise specifications and product design in connection with any feature of our products. Such changes do not entitle the buyer to corresponding changes, improvements, additions or replacements for equipment previously sold or shipped.

Item	Part #	Description	Wiring Item #
------	--------	-------------	---------------

**FAN ASSEMBLIES, AND THERMOSTATS**

- |    |           |  |     |
|----|-----------|--|-----|
| A. | <b>4W</b> | Standard Energy Efficient Fan Assembly | (1) |
|    | 0477653   | Fan Motor, Evaporator<br>(MO.4410544)  |     |
|    | 0382383   | Fan Blade                              |     |

**HEATERS**

- |    |         |                           |     |
|----|---------|---------------------------|-----|
| B. |         | Nosing Anti-sweat Heaters | (2) |
|    | 0495007 | 8 ft case (HE.4850685)    |     |
|    | 0495008 | 12 ft case (HE.4850686)   |     |
| C. |         | Canopy Anti-sweat Heaters | (3) |
|    | 0512501 | 8 ft case                 |     |
|    | 0512503 | 12 ft case                |     |

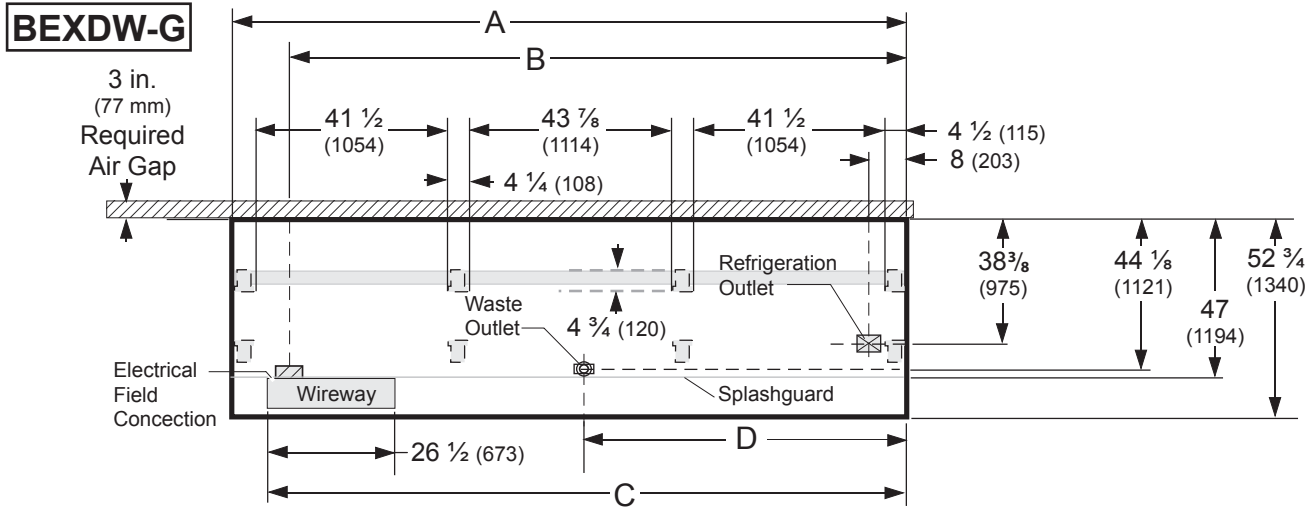
Data sheet-Excel-BEXDW-G

# Engineering Plan Views

PHYSICAL DATA	
Merchandiser Drip Pipe (in.)	1 1/4
Merchandiser Liquid Line (in.)	3/8
Merchandiser Suction Line (in.)	5/8

## Medium Temperature

Dimensions shown as inches and (mm).



**NOTE: Case-to-Case Electrical Connections are made IN FRONT OF SPLASHGUARD.**

FRONT

General	8 ft	12 ft
<b>(A)</b> Case Length ( <i>without ends or partitions</i> ) (Each end and insulated partition adds 2 in. (51 mm) to case line up.)	96 3/8 (2448)	144 1/2 (3670)
Maximum O/S dimension of case back to front ( <i>includes bumper</i> )	52 3/4 (1340)	52 3/4 (1340)
Back of case to front of splashguard	47 (1194)	47 (1194)
Back of case to O/S edge of front leg	39 7/8 (1013)	39 7/8 (1013)
Distance between edges of external legs and center legs	41 1/2 (1054)	41 1/2 (1054)
Distance between edges of center legs	NA	43 7/8 (1114)
Distance between front legs and splashguard	6 5/8 (168)	6 5/8 (168)
<b>Electrical Service</b> ( <i>Electrical Field Wiring connection point</i> )		
<b>(B)</b> RH End of case to center of stub up area	84 1/4 (2140)	132 3/8 (3363)
Back of case to center of stub up area	47 7/8 (1216)	47 7/8 (1216)
Length of electrical wireway	26 1/2 (673)	26 1/2 (673)
<b>(C)</b> RH End of case to LH end of wireway	90 1/8 (2289)	138 1/4 (3511)
<b>Waste Outlets</b> ( <i>One each end</i> )		
<b>(D)</b> RH End of case to the center of waste outlet	19 3/4 (502)	67 7/8 (1723)
Back O/S of case to center of waste outlets	44 (1118)	44 (1118)
Schedule 40 PVC drip pipe	1 1/4 (32)	1 1/4 (32)
<b>Refrigeration Outlet</b>		
Back of case to center of refrigeration outlet	26 1/4 (665)	26 1/4 (665)
RH end of case to center of refrigeration outlet	8 (203)	8 (203)

Single Deck Wall Display with Glass Front

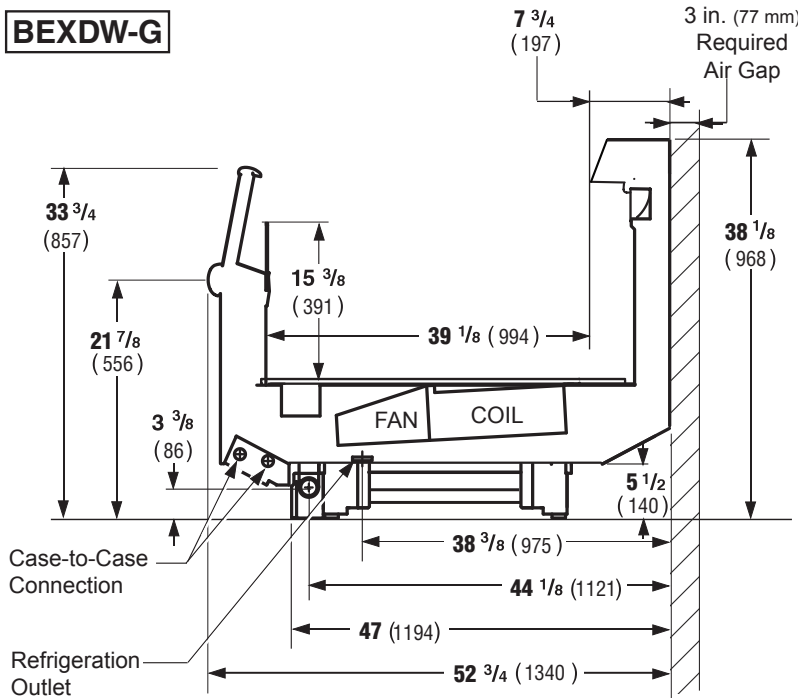


Hussmann refrigerated merchandisers configured for sale for use in the United States meet or surpass the requirements of the DOE 2017 energy efficiency standards.

**Excel BEXDW-G**  
**Medium Temperature**

Dimensions shown as inches and (mm).

**BEXDW-G**



**CONVENTIONAL CONTROLS**

Low Pressure Backup Control — CI/CO \*

MED

+22°F / +10°F

Indoor Unit Only, Pressure Defrost Termination\*

Not Recommended

\*Use a Temperature Pressure Chart to determine PSIG conversions.

**REFRIGERATION DATA<sup>1</sup>**

Estimated Charge \*\*

8 ft	2.5 lb	40 oz	1.1 kg
12 ft	3.7 lb	59 oz	1.7 kg

\*\*This is an average for all refrigerant types. Actual refrigerant charge may vary by approximately 0.5 lb (8 oz / 0.2 kg).

**NSF Certification**

This merchandiser model is manufactured to meet NSF/ANSI (National Sanitation Foundation) Standard #7 requirements for construction, materials & cleanability.

**REFRIGERATION DATA (Cont.)<sup>1</sup>**

BEXDW8G		Optimal Shelf Life			Energy Comparison
Application		Dairy/Deli	Meat	NSF Type Ambient <sup>3</sup>	AHRI 1200 Rating Point <sup>4</sup>
Unlit	Discharge Air °F (°C)	26 (-3.3)	25 (-3.9)	24 (-4.4)	31 (-0.6)
	Average Evaporator °F (°C) <sup>2</sup>	21 (-6.1)	20 (-6.7)	18 (-7.8)	26 (-3.3)
	Parallel Btu/hr/ft (Watts/m)	560 (538)	564 (543)	498 (479)	515 (495)
	Conventional Btu/hr/ft (Watts/m)	620 (596)	630 (606)	690 (664)	570 (548)
Off - Time Defrost Schedule	Duration(Minutes)	50	50	50	50
	Frequency (Hours Between Defrost)	8	8	8	8
Gas Defrost Schedule	Duration(Minutes) <sup>5</sup>	10	10	10	10
	Frequency (Hours Between Defrost)	8	8	8	8

Notes:

- All data based on store temperature and humidity that does not exceed NSF Type 1 ambient conditions of 75°F and 55% relative humidity except where noted.
- Average evaporator temperature shown. Adjust to dew point for high glide refrigerants for unit sizing. Care should be taken to use the dew point in PT tables for measuring and adjusting superheat.
- Data for operation in NSF Type 2 ambient of 80 °F and 55% relative humidity
- AHRI 1200 Rating Point for energy consumption comparison only
- Temperature termination recommended with gas defrost. Terminate at 60 °F at the discharge air sensor.

<b>Excel BEXDW-G</b> <b>Medium Temperature</b>
---

**Electrical Data**

			8 ft	12 ft		
Number of Fans – 4W Evaporator			2	2		
			Amperes		Watts	
			8 ft	12 ft	8 ft	12 ft
<b>Evaporator Fans</b>						
120V	50/60Hz	Standard Energy Efficient	0.24	0.36	16	24
230V	50/60Hz	Standard Energy Efficient	0.12	0.18	16	24
230V	60Hz	Export	0.30	0.45	48	72
230V	50Hz	Export	0.36	0.54	54	81
<b>Nosing Anti-sweat Heaters (on fan circuit)</b>						
120V	50/60Hz	Standard	0.87	1.30	104	156
230V	50/60Hz	Export	0.45	0.68	104	156
<b>Canopy Anti-sweat Heaters (on fan circuit)</b>						
120V	50/60Hz	Standard	0.20	0.30	24	36
230V	50/60Hz	Export	0.11	0.16	24	36
<b>Minimum Circuit Ampacity</b>						
120V	50/60Hz	Standard Energy Efficient	1.31	1.86		
230V	50/60Hz	Standard Energy Efficient	0.77	1.06		
230V	60Hz	Export	0.95	1.33		
230V	50Hz	Export	1.01	1.42		
<b>Maximum Over Current Protection 120V</b>			<b>20</b>	<b>20</b>		
Maximum Over Current Protection 230V			15	15		
<b>Standard Lighting</b>						
None						

**Product Data**

<i>Recommended Usable Cube</i> <sup>1</sup> (Cu Ft/Ft)	4.30 ft <sup>3</sup> /ft (0.40 m <sup>3</sup> /m)
<i>AHRI Total Display Area</i> <sup>2</sup> (Sq Ft/Ft)	3.76 ft <sup>2</sup> /ft (1.15 m <sup>2</sup> /m)
<i>Shelf Area</i> <sup>3</sup> (Sq Ft/Ft)	3.64 ft <sup>2</sup> /ft (1.11 m <sup>2</sup> /m)

<sup>1</sup> AHRI Refrigerated Volume less shelving and other unusable space: Refrigerated Volume/Unit of Length, ft<sup>3</sup>/ft [m<sup>3</sup>/m]

<sup>2</sup> Computed using AHRI 1200 standard methodology: Total Display Area, ft<sup>2</sup> [m<sup>2</sup>]/Unit of Length, ft [m]

<sup>3</sup> Shelf surface area is composed of bottom deck plus standard shelf complement, as shown in the Hussmann *Product Reference Guide*. The standard shelf complement for this model is NONE.

**ESTIMATED SHIPPING WEIGHT<sup>4</sup>**

Case	8 ft	12 ft	Solid End (each)
<b>lb (kg)</b>	1000 (454)	1200 (544)	50 (23)

<sup>4</sup> Actual weights will vary according to optional kits included.

**Wiring Diagram**

