

# HUSSMANN<sup>®</sup>

## microSC<sup>™</sup>

# MNGSC-A

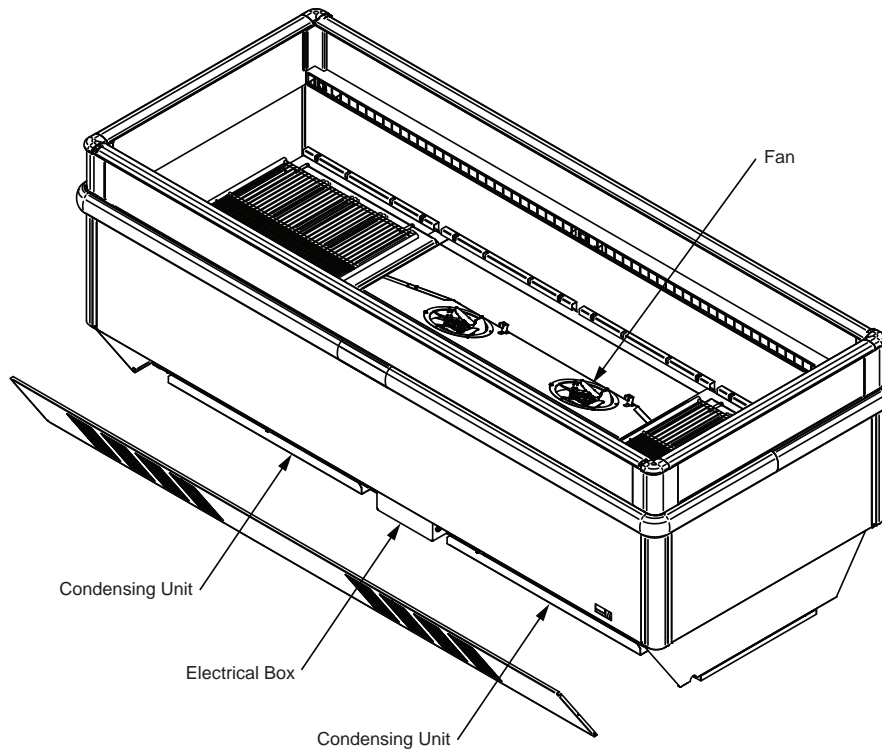
Deli / Beverage / Produce/ Meat  
Air-Cooled  
R-290

Merchandiser Data Sheet

**P/N 3109694\_D**

**UL EPH<sup>®</sup> Certified**

**July 2022**



8 foot model shown above.

Portion of parts removed for clarity.

**4 and 6 foot are certified for NSF Type II ambient applications (80°F / 55% RH).**

**8 foot is certified for NSF Type I ambient applications (75°F / 55% RH).**

### UL EPH Certification

This merchandiser model is manufactured to meet ANSI/SCC Standards requirements for construction, materials, and cleanability.

Performance Data	Page 2	Estimated Shipping Weights	Page 5
Product Data (AHRI Statistics)	Page 2	Wiring Diagrams	Page 6
Cross Section	Page 3	QR Code for Parts and Product Information	Page 10
Plan View	Page 4	Revision History	Page 10
Electrical Loads	Page 5		

Data sheet-MNGSC-A

**⚠ WARNING**

Component parts shall be replaced with like components, and servicing shall be done by factory authorized service personnel only, so as to minimize the risk of possible ignition due to incorrect parts or improper service.

We reserve the right to change or revise specifications and product design in connection with any feature of our products. Such changes do not entitle the buyer to corresponding changes, improvements, additions or replacements for equipment previously sold or shipped.

# MNGSC-A

Deli / Beverage /  
Produce / Meat

## Refrigeration Data <sup>1\*\*</sup>

		Deli / Beverage / Produce / Meat		
		4 Foot	6 Foot	8 Foot
Refrigeration	Discharge Air °F (°C)	24 to 42 (-4.4 to 5.5)	23 to 41 (-5 to 5)	21 to 39 (-6 to 4)
	Average Evaporator °F (°C)	18 to 22 (-7.7 to -6.1)	10 to 15 (-12 to -9)	18 to 22 (-7.7 to -6.1)
	Total Heat of Rejection <sup>2</sup>	3083	4056	6165
Condensing Unit	Capacity <sup>3</sup>	2331	3073	4662
	Nominal HP	1/4	1/4	1/4
Evaporator Fan Speed	7" Fan Assembly	1000	1100	1550

Notes:

1. All data based on store temperature and humidity that does not exceed NSF Type 1 ambient conditions of 75°F and 55% relative humidity except where noted.
2. Total Heat of Rejection listed for maximum design conditions, normal operating loads may be lower.
3. Condensing Unit Capacity is calculated at an evaporator temperature of 14°F and a condensing temperature of 95°F.

## Defrost Data

All models with the same defrost parameters.

Frequency (hours between defrost) 8

Defrost Type Offtime

Defrost Termination (Temperature °F) 45

Time (minutes) 50

ELECTRIC OR GAS Not Available

## Energy Consumption Data DEC (kWH/day)

4 Foot	6 Foot	8 Foot
7.69	8.72	9.24

## Refrigerant Data

Refrigerant Type R-290

### Charge <sup>4</sup>

4 Foot	0.33 lb	5.3 oz	150 g
6 Foot	0.33 lb	5.3 oz	150 g
8 Foot	0.66 lb	10.6 oz	300 g

<sup>4</sup> 8 foot has 2 circuits (each circuit has 150 g.).  
4 and 6 foot has 1 circuit (each circuit is 150 g.).

## Sound Data

4 Foot	6 Foot	8 Foot
56.6 dB	59.8 dB	68.3 dB

## Product Data<sup>5</sup>

	4 Foot	6 Foot	8 Foot
Total Display Area (ft <sup>2</sup> )	11.1	16.65	22.26
Total Display Area (ft <sup>2</sup> /ft)	2.78		
Shelf Area (in <sup>2</sup> )	1598.4	2397.6	3196.8
Shelf Area (ft <sup>2</sup> )	11.10	16.65	22.20
Shelf Area (ft <sup>2</sup> /ft)	2.8		
AHRI Gross Refrigerated Volume (cu ft <sup>3</sup> )	8.3	12.5	16.6
AHRI Gross Refrigerated Volume (cu ft/ft)	2.1		
AHRI Gross Refrigerated Volume (cu m/m)	0.19		
Total Display Area (sq m/m)	2.07		
Shelf Area (m <sup>2</sup> /m)	0.85		

<sup>5</sup> Computed using AHRI 1200 standard methodology

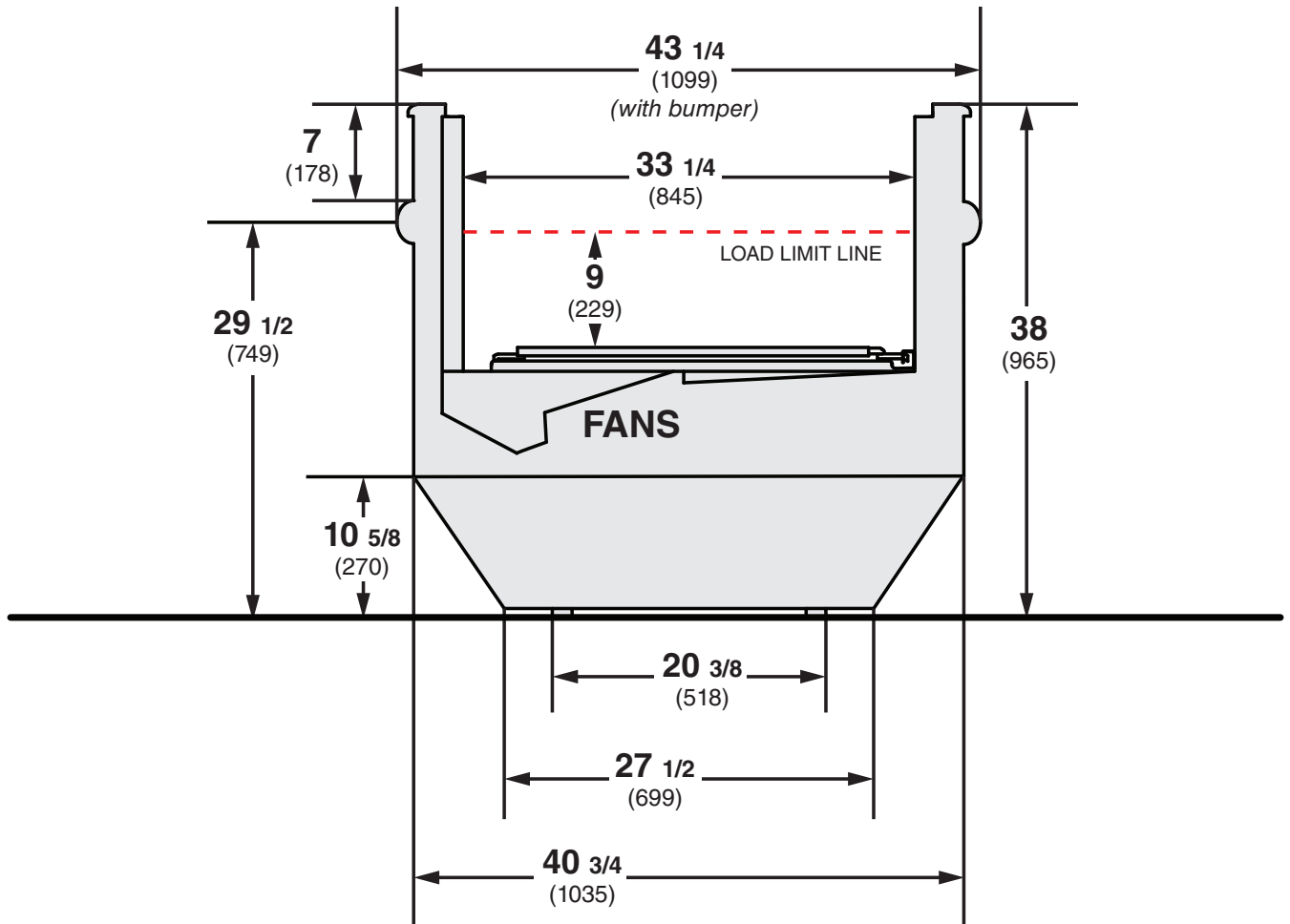


Husmann refrigerated merchandisers configured for sale for use in the United States meet or surpass the requirements of the DOE 2017 energy efficiency standards.

A clearance of 10-in is needed around the case to ensure no obstruction in the condensing unit air flow.

Dimensions shown as in. and (mm).

**MNGSC-A**



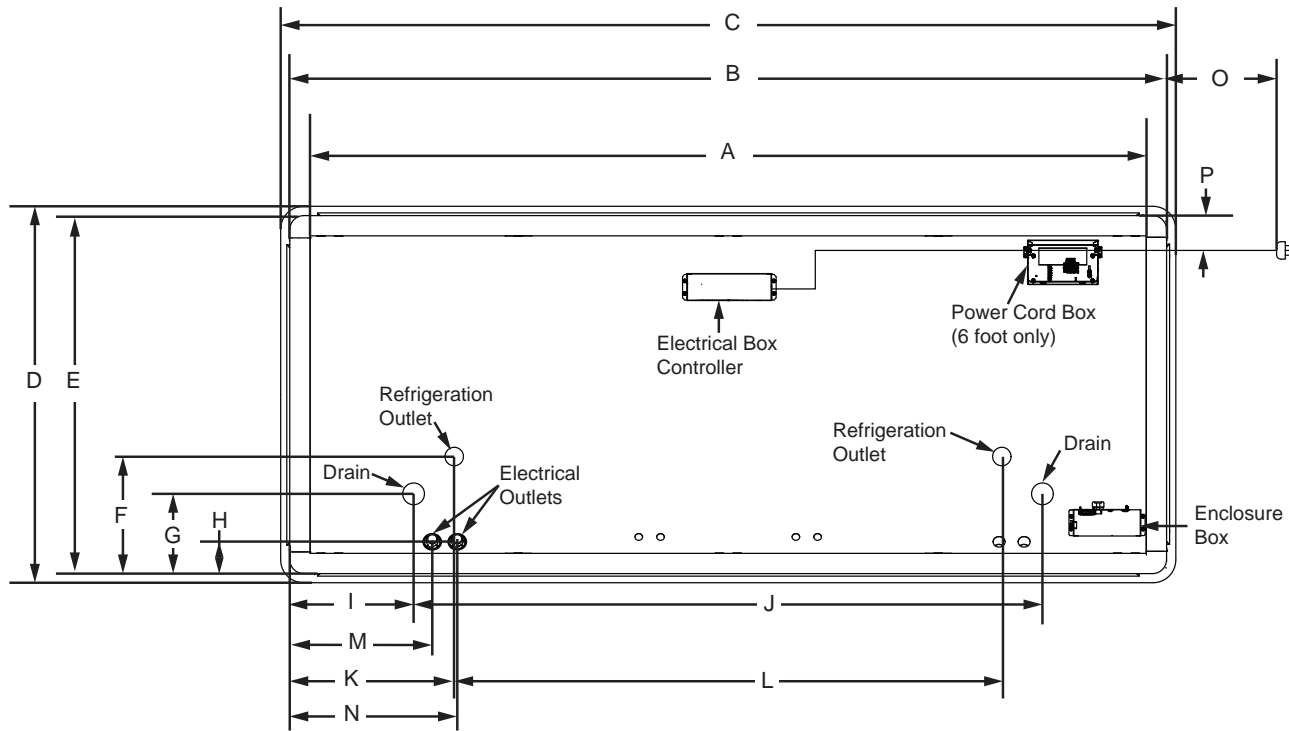
# MNGSC-A

Deli / Beverage /  
Produce / Meat

	Controller Box	Enclosure Box	Power Cord Box
4 ft	Right	Right	N/A
6 ft	Center	Right	Right
8 ft	Center	N/A	N/A

# Engineering Plan View

Dimensions shown as in. and (mm).



Front

General		4 Foot	6 Foot	8 Foot
(A)	Case Length	48 1/8 (1222)	73 1/2 (1867)	96 1/8 (2442)
(B)	Case Length (with pair of ends)	50 3/4 (1289)	76 3/4 (1949)	100 3/4 (2559)
(C)	Case Length (with pair of ends and bumper)	52 7/8 (1343)	78 7/8 (2003)	102 7/8 (2613)
(D)	Maximum O/S of case back to front (includes bumper)	43 1/4 (1099)	43 1/4 (1099)	43 1/4 (1099)
(E)	Maximum O/S of case back to front (without bumper)	33 1/4 (845)	33 1/4 (845)	33 1/4 (845)
(F)	Center of refrigeration outlet to front of case	12 1/4 (311)	11 1/4 (286)	13 5/8 (346)
(G)	Center of drain to front of case	9 3/8 (238)	9 3/8 (238)	9 3/8 (238)
(H)	Center of electrical outlets to front of case	4 1/4 (108)	5 1/2 (140)	4 1/8 (105)
(I)	Left of case to center of drain	14 1/4 (362)	14 1/8 (359)	14 1/8 (359)
(J)	Center of left drain to center of right drain	24 1/8 (616)	49 5/8 (1260)	72 1/4 (1835)
(K)	Left of case to center of refrigeration outlet	11 5/8 (295)	21 5/8 (549)	18 5/8 (473)
(L)	Center of left refrigeration outlet to center of right refrigeration outlet	N/A	N/A	62 7/8 (1597)
(M)	Left of case to center of first electrical outlet	17 3/4 (451)	17 1/4 (438)	15 7/8 (403)
(N)	Left of case to center of second electrical outlet	20 5/8 (524)	20 3/8 (518)	18 3/4 (476)
(O)	Right end of case to end of extension cord	125 (3175)	122 (3098)	58 (1473)
(P)	Back of case to extension cord	3 7/8 (98)	3 7/8 (98)	3 7/8 (98)

# Electrical Data

**MNGSC-A**  
 Deli / Beverage /  
 Produce / Meat

*NOTE: These values below are rated values for individual components and should not be added together to determine total merchandiser electrical load.*

	<b>4 Foot</b>	<b>6 Foot</b>	<b>8 Foot</b>
<b>Merchandiser Requirements</b>			
Power Supply	120V / 1ph / 60Hz (all models)		
Total Load (Amps)	7	7.5	12
Power cord quantity	1 (all models)		
NEMA Plug	5-15P (all models)		

**NEMA Plug**

5-15P

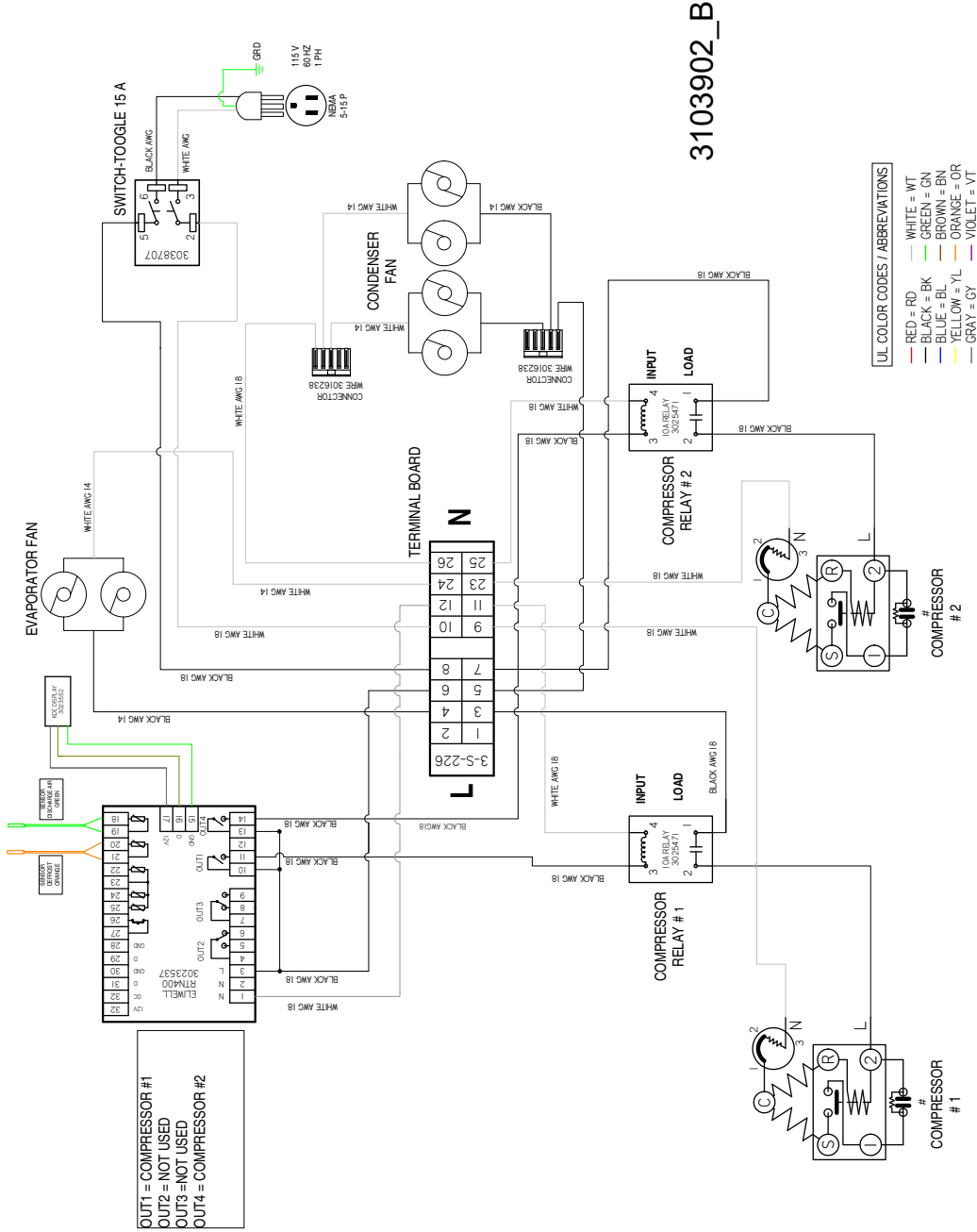


<b>ESTIMATED SHIPPING WEIGHT †</b>				
<b>Case</b>	<b>4 Foot</b>	<b>6 Foot</b>	<b>8 Foot</b>	<b>Solid End</b>
<b>lb (kg)</b>				<b>(each)</b>
	600 (272.4)	743 (337.3)	1085 (492)	Included
† Actual weights will vary according to optional kits included.				

# MNGSC-A

Deli / Beverage /  
Produce / Meat

## Standard Wiring Diagram



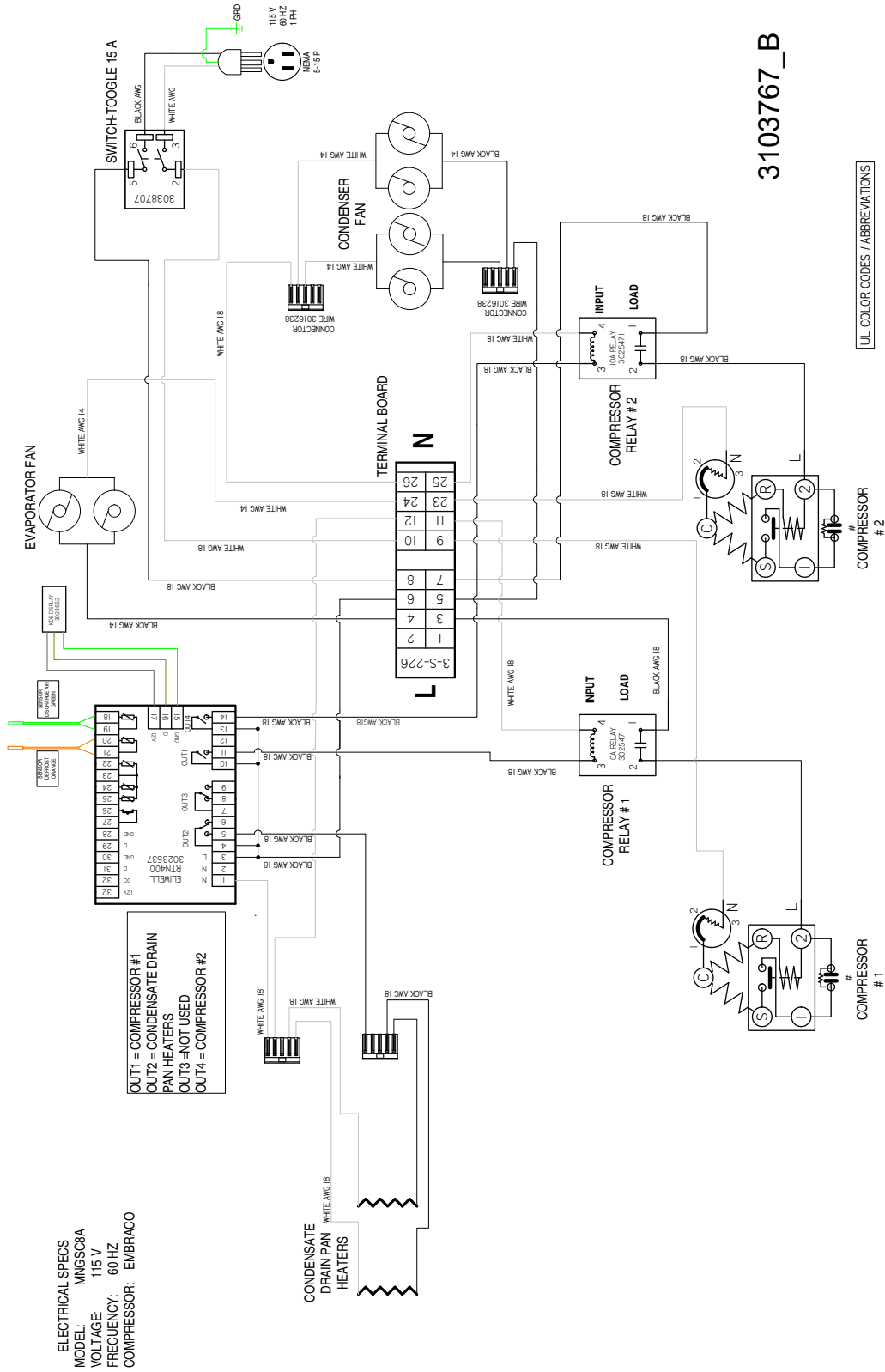
3103902\_B

ELECTRICAL SPECS  
MODEL: MNGSC8A  
VOLTAGE: 115 V  
FREQUENCY: 60 HZ  
COMPRESSOR: EMBRACO

OUT1 = COMPRESSOR #1  
OUT2 = NOT USED  
OUT3 = NOT USED  
OUT4 = COMPRESSOR #2

# Optional Condensate Drain Pan Heater Wiring Diagram

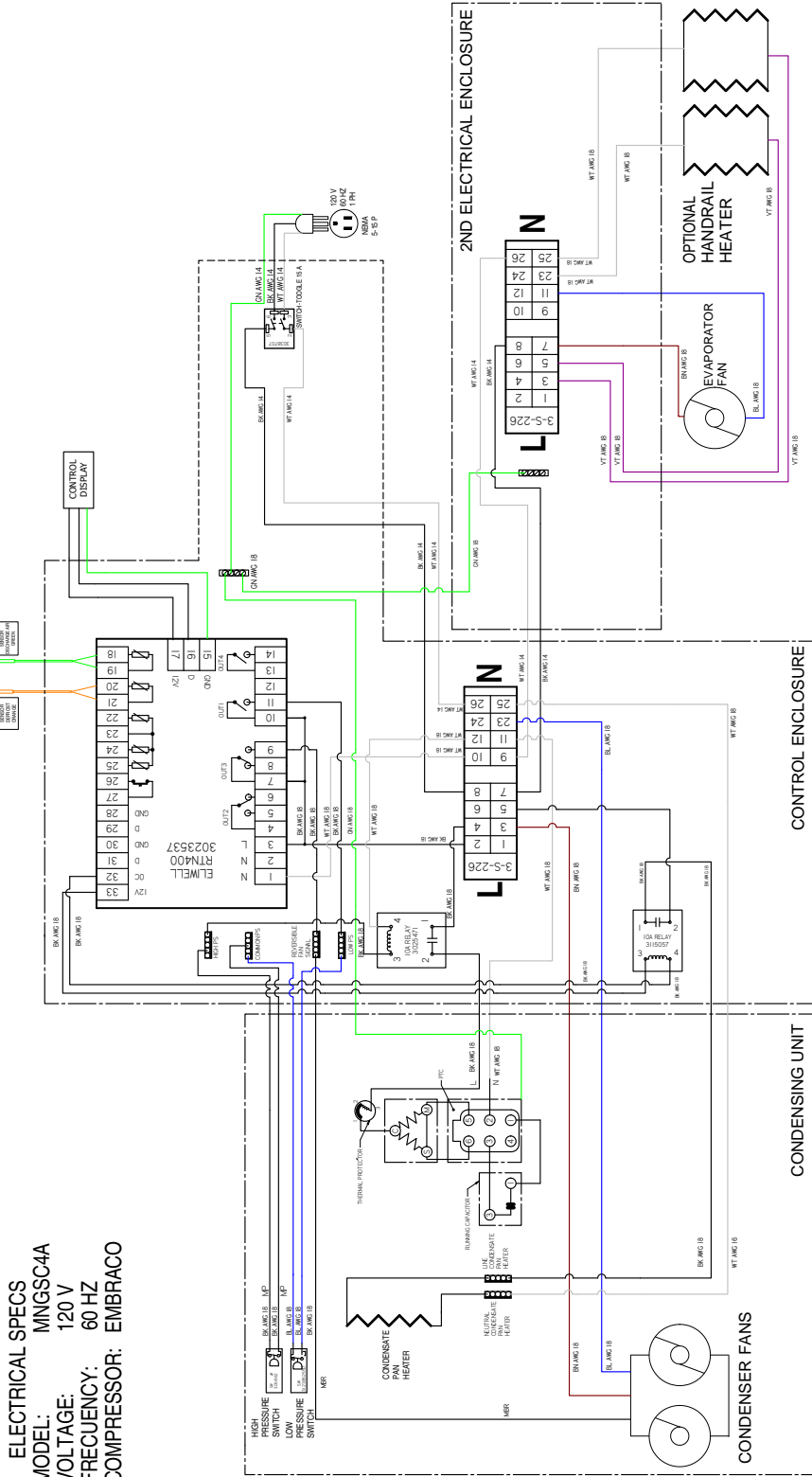
**MNGSC-A**  
Deli / Beverage /  
Produce / Meat



# MNGSC-A

Deli / Beverage /  
Produce / Meat

## 4 Foot Wiring Diagram



**ELECTRICAL SPECS**  
**MODEL:** MNGSC4A  
**VOLTAGE:** 120 V  
**FREQUENCY:** 60 HZ  
**COMPRESSOR:** EMBRACO

**3156417\_A**

- UL COLOR CODES / ABBREVIATIONS**
- RED = RD
  - BLACK = BK
  - BLUE = BL
  - YELLOW = YL
  - GRAY = GY
  - WHITE = WT
  - GREEN = GN
  - BROWN = BN
  - ORANGE = OR
  - VOILET = VT
- FACTORY IAGA WIRE**
- FIELD WIRE**
- WIRE MARKER COLORS/ABBREVIATIONS**
- ORANGE = MO
  - PINK = MFI
  - PURPLE = MP
  - DARK BLUE = MDS
  - RED = MR
  - YELLOW = MFL
  - MAROON = MMR
  - BLACK = MBK
  - BLUE = MBL
  - BROWN = MBR
  - RED = MRL
  - YELLOW = MFL
  - MAROON = MMR

**NOTES:**

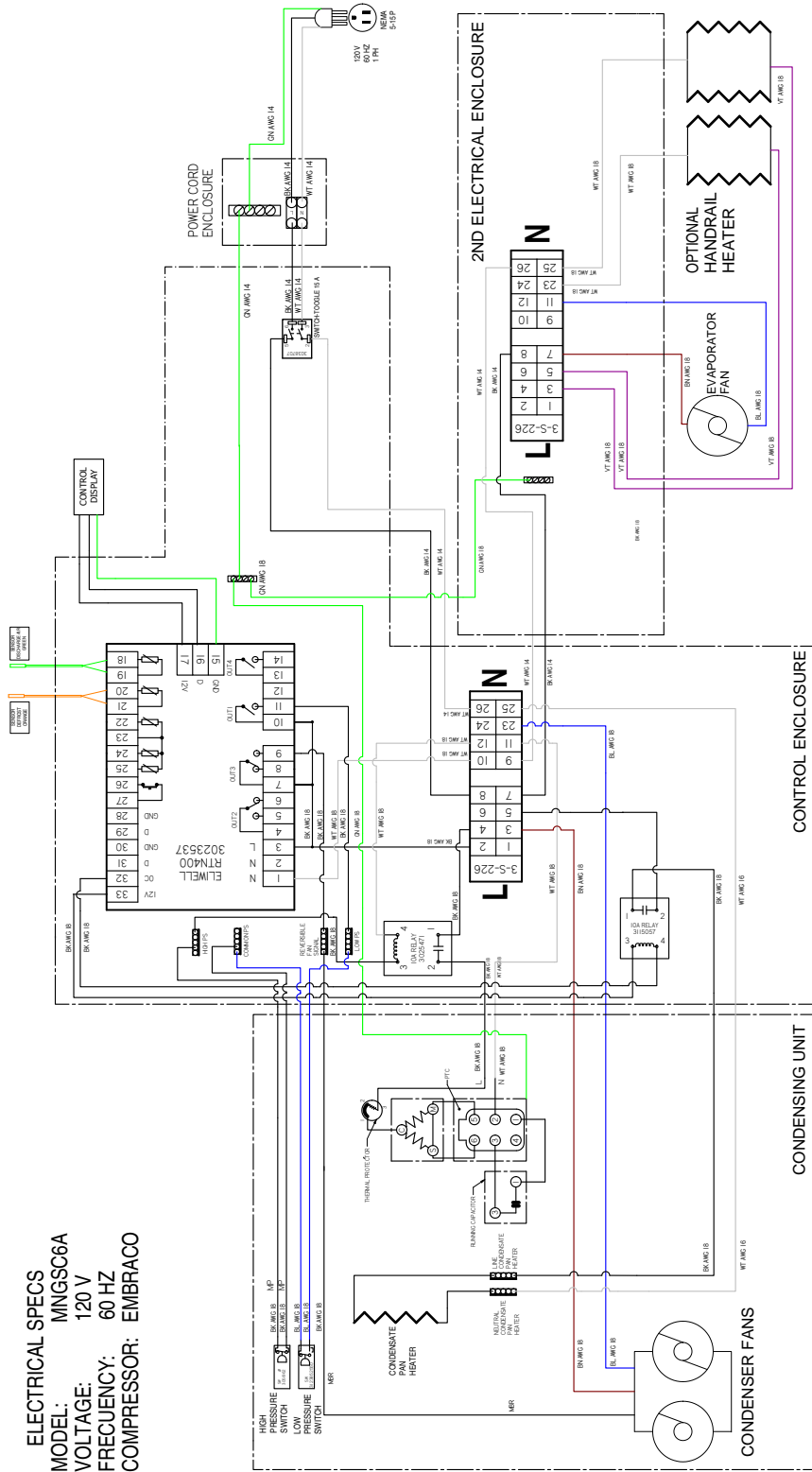
1. PRINTED DOCUMENT REQUIRED SETTING ALL COLORS BLACK & WHITE
2. MATERIAL-WHITE BOND PAPER, LETTER SIZE.
3. MNG = ISLAND CASES



# 6 Foot Wiring Diagram

# MNGSC-A

Deli / Beverage /  
Produce / Meat



**ELECTRICAL SPECS**  
**MODEL:** MNGS06A  
**VOLTAGE:** 120 V  
**FREQUENCY:** 60 HZ  
**COMPRESSOR:** EMBRACO

3160901\_A

**UL COLOR CODES / ABBREVIATIONS**

RED = RD	WHITE = WT
BLACK = BK	GREEN = GN
BLUE = BL	BROWN = BN
YELLOW = YL	ORANGE = OR
GRAY = GY	VIOLET = VT

**FACTORY I/OA WIRE**  
**FACTORY I/OCA WIRE**  
**FIELD WIRE**

**WIRE MARKER COLORS/ABBREVIATIONS**

ORANGE = MO	ORANGE = MO
PNK = MPI	PNK = MPI
PURPLE = MP	PURPLE = MP
RED = MR	RED = MR
YELLOW = MTL	YELLOW = MTL
MAROON = MMR	MAROON = MMR

- NOTES:**
1. PRINTED DOCUMENT REQUIRED SETTING ALL COLORS BLACK & WHITE
  2. MATERIAL-WHITE BOND PAPER, LETTER SIZE.
  3. MNG - ISLAND CASES

# MNGSC-A

Deli / Beverage /  
Produce / Meat



Scan the QR code with your mobile device to access additional product information or order parts.

Parts may also be ordered at:

[parts.husmann.com](https://parts.husmann.com)

Call toll free: 1.855.487.7778

---

## Revision History

Revision A: January 2020: Original Issue

Revision B: January 2020: Updated footnotes on page 2, clearance note on page 3, electrical data on page 5 and added new wiring diagram.

Revision C: March 2020: Added the cover warning, updated the Refrigeration Data on page 3, Electrical Data on page 5, wiring diagrams and plan view and cross section.

Revision D: July 2022: Added 4 and 6 foot data.