



MDN-BA/SA

Dairy / Deli / Beverage / Produce

Air-cooled

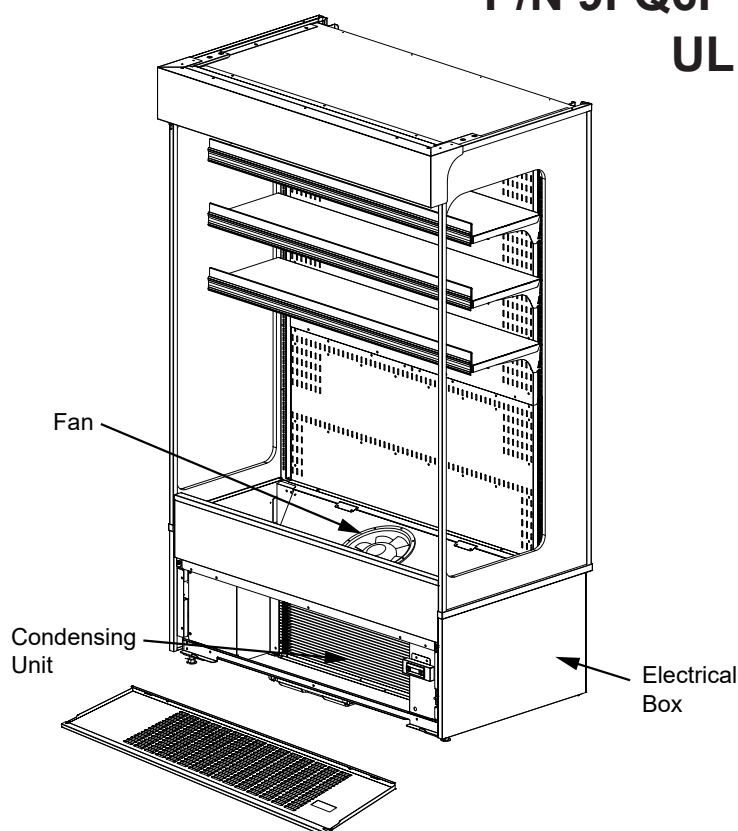
R-290

Merchandise Data Sheet

P/N 9FQ6P11007600_B

UL EPH® Certified

March 2021



Portion of parts removed for clarity.

MDN4775BA/SA, 4 foot merchandiser shown above.

MDN3575BA/SA and MDN4775BA/SA are intended for NSF Type II ambient applications (80°F / 55% RH).

UL EPH Certification

This merchandiser model is manufactured to meet ANSI/SCC Standards requirements for construction, materials, and cleanability.

Performance Data	Page 2	Estimated Shipping Weights	Page 5
Product Data (AHRI Statistics)	Page 2	Wiring Diagrams	Page 6
Cross Section	Page 3	QR Code for Parts and Product Information	Page 8
Plan View	Page 4	Revision History	Page 8
Electrical Loads	Page 5		

Data sheet-MDN-BA/SA

⚠ WARNING

Component parts shall be replaced with like components, and servicing shall be done by factory authorized service personnel only, so as to minimize the risk of possible ignition due to incorrect parts or improper service.

We reserve the right to change or revise specifications and product design in connection with any feature of our products. Such changes do not entitle the buyer to corresponding changes, improvements, additions or replacements for equipment previously sold or shipped.

MDN-BA/SA

Dairy / Deli /
Beverage / Produce

Refrigeration Data ^{1**}

		Dairy / Deli / Beverage / Produce	
		MDN3575BA/SA	MDN4775BA/SA
Refrigeration Data	Discharge Air °F (°C)	25 to 27 (-4 to -3)	
	Average Evaporator °F (°C)	14 to 10 (-10 to -12)	
	Total Heat of Rejection ²	8538	13562
Condensing Unit	Capacity (Btu/hr) ³	5919	8740
Evaporator Fan Speed	8" Fan Assembly	1320	

Notes:

1. All data based on store temperature and humidity that does not exceed NSF Type 1 ambient conditions of 75°F and 55% relative humidity except where noted.
2. Total Heat of Rejection listed for maximum design conditions, normal operating loads may be lower.
3. Condensing Unit Capacity is calculated at an evaporator temperature of 5°F and a condensing temperature of 113°F.

Defrost Data

Frequency (hours between defrost)	4
Defrost Type	Offtime
Defrost Termination (Temperature °F)	45
Time (minutes)	50

Sound Data

MDN-BA/SA	74.1 dB
-----------	---------

Energy Consumption Data ⁴

DEC (kWH/day)

MDN3575BA/SA	20.1
MDN4775BA/SA	24.8

⁴ Energy values obtained under AHRI 1200.

Refrigerant Data

Refrigerant Type R-290

Charge

MDN3575BA/SA	0.26 lb	4.2 oz	.12 kg
MDN4775BA/SA ⁵	0.28 lb	4.6 oz	.13 kg

⁵ MDN4775A has 2 circuits,

Product Data ⁶

	MDN3575BA/SA	MDN4775BA/SA
Total Display Area (ft ²)	11.3	15.2
Total Display Area (ft ² /ft)	4.0	4.0
Shelf Area (in ²)	2353	3189
Shelf Area (ft ²)	16.3	22.1
Shelf Area (ft ² /ft)	5.8	5.8
AHRI Gross Refrigerated Volume (cu ft ³ /ft)	4.6	4.6
AHRI Gross Refrigerated Volume (cu m/m)	0.4	0.4
Total Display Area (sq m/m)	1.2	1.3
Shelf Area (m ² /m)	1.8	1.8

⁶ Computed using AHRI 1200 standard methodology

Self-Contained, Medium Temperature Multi-Deck
Merchandise, Narrow Depth, Black or Stainless Steel,
Air-cooled, R-290

MDN-BA/SA

Dairy / Deli /
Beverage / Produce

DOE 2017
Energy Efficiency
Compliant

Husmann refrigerated merchandisers configured for sale for use in the United States meet or surpass the requirements of the DOE 2017 energy efficiency standards.

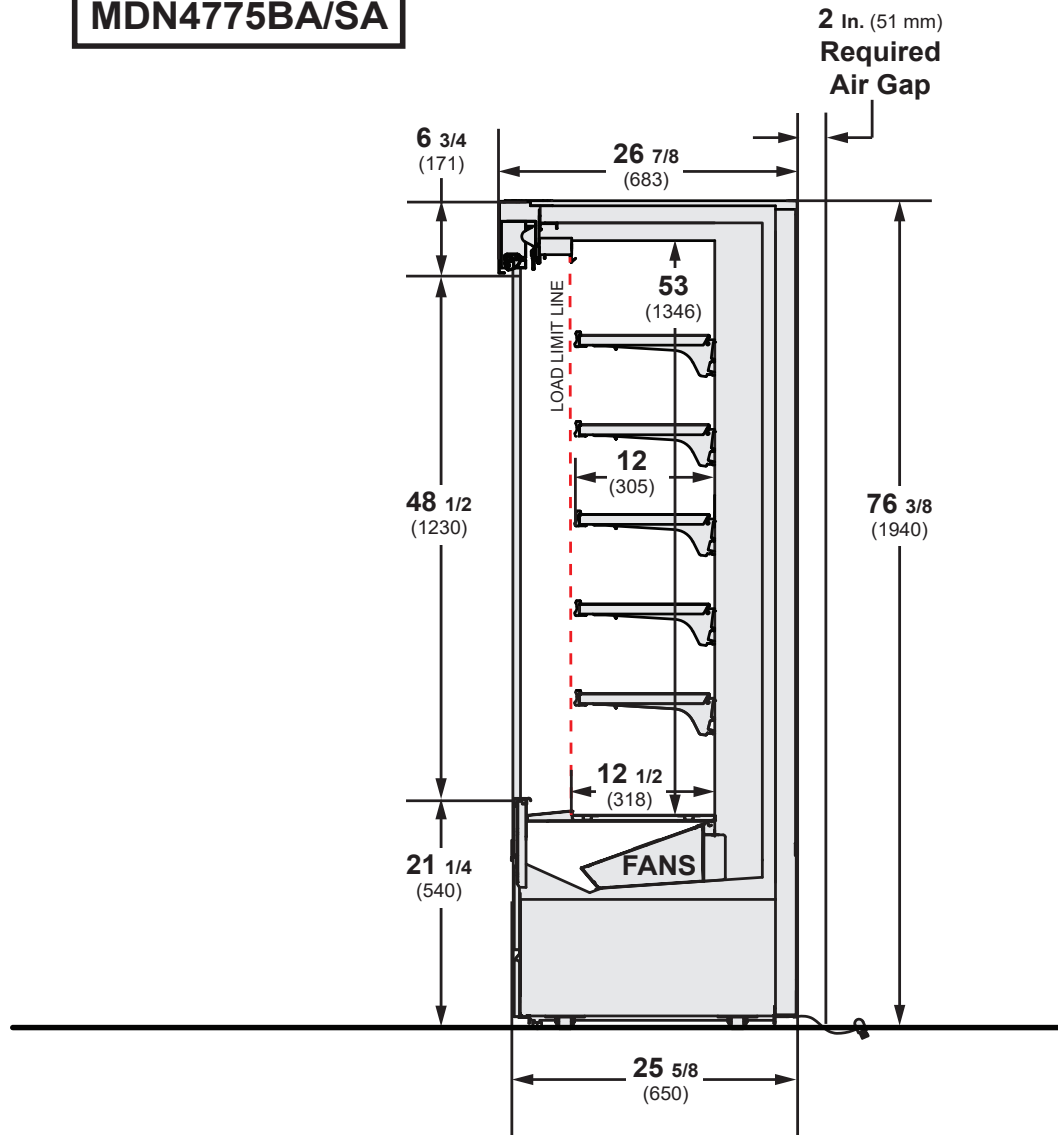
Shelf complement shown as tested, distributed equally between bottom display plan and interior top panel.

MDN-BA/SA: 5 rows of 12 in. shelves

Dimensions shown as in. and (mm).

2 inch Required Air Gap, 2 sides and rear
24 inch front

MDN3575BA/SA
MDN4775BA/SA



MDN-BA/SA

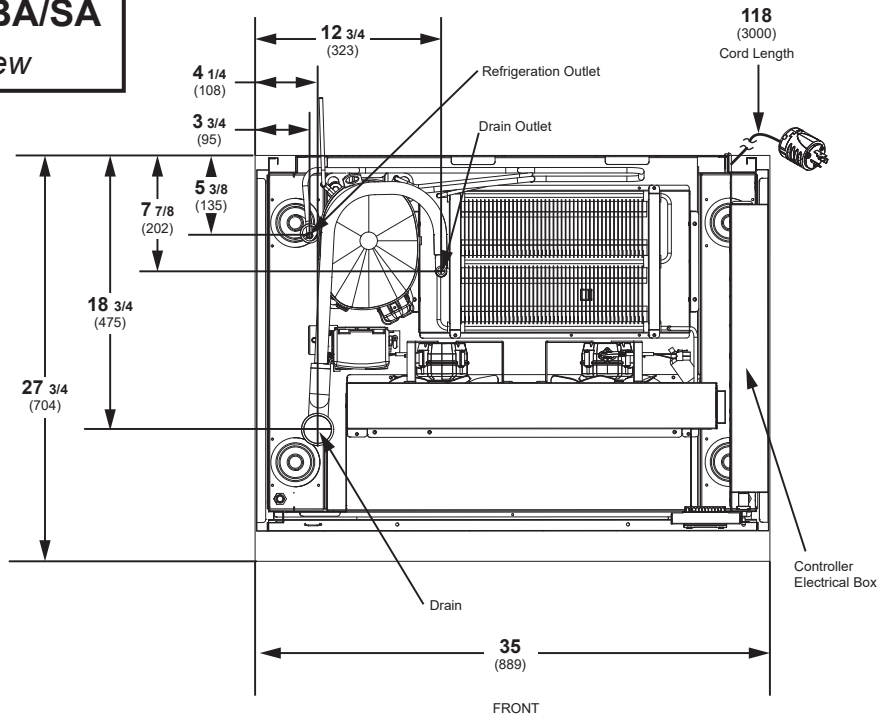
Dairy / Deli /
Beverage / Produce

Engineering Plan View

Dimensions shown as in. and (mm).

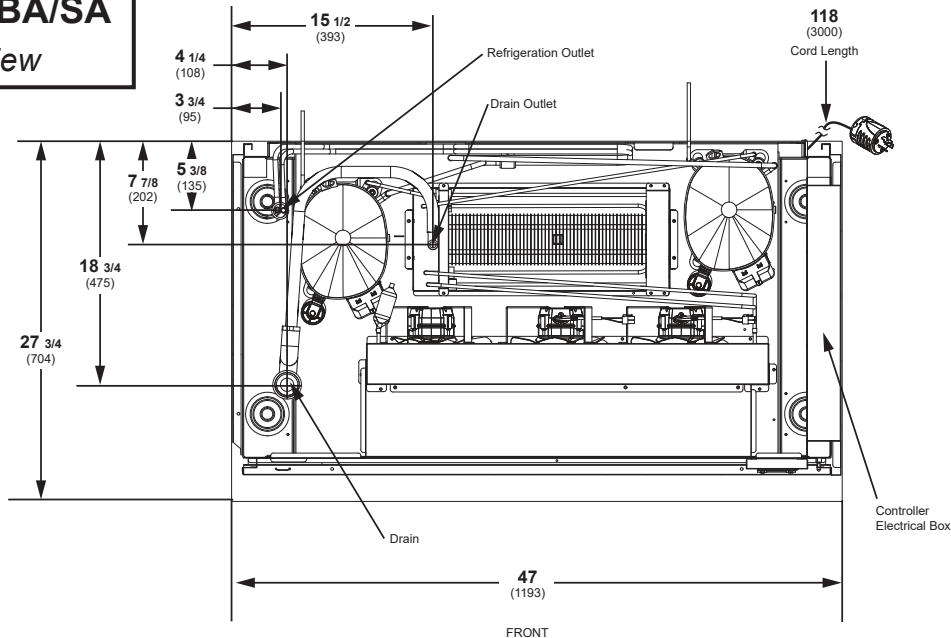
MDN3575BA/SA

Plan View



MDN4775BA/SA

Plan View



General

(A) Case Length *(includes one pair ends)*

Maximum O/S dimension of case back to front

(B) Interior case length

MDN3575BA/SA

35 (889)

27 3/4 (704)

33 3/4 (857)

MDN4775BA/SA

47 (1193)

27 3/4 (704)

45 1/2 (1156)

Electrical Data

NOTE: These values below are rated values for individual components and should not be added together to determine total merchandiser electrical load.

Number of Evaporator Fans

8-in.

MDN-BA/SA

1

Evaporator Fans

Input
(Amperes)

Output
(Watts)

208-230V / 1ph / 60Hz Energy Efficient

0.1-.19

13

* Amperes/watts are at max values

MDN3575BA/SA

MDN4775BA/SA

Merchandiser Requirements

Power Supply 208V / 1ph / 60Hz

Total Load (Amps)

8.5

15.0

NEMA Plug

L6-20P 2 Pole/3 Wire 20A/230V



ESTIMATED SHIPPING WEIGHT †

Case

MDN3575BA/SA

MDN4775BA/SA

Solid End
(each)

lb (kg)

492 (224)

592 (269)

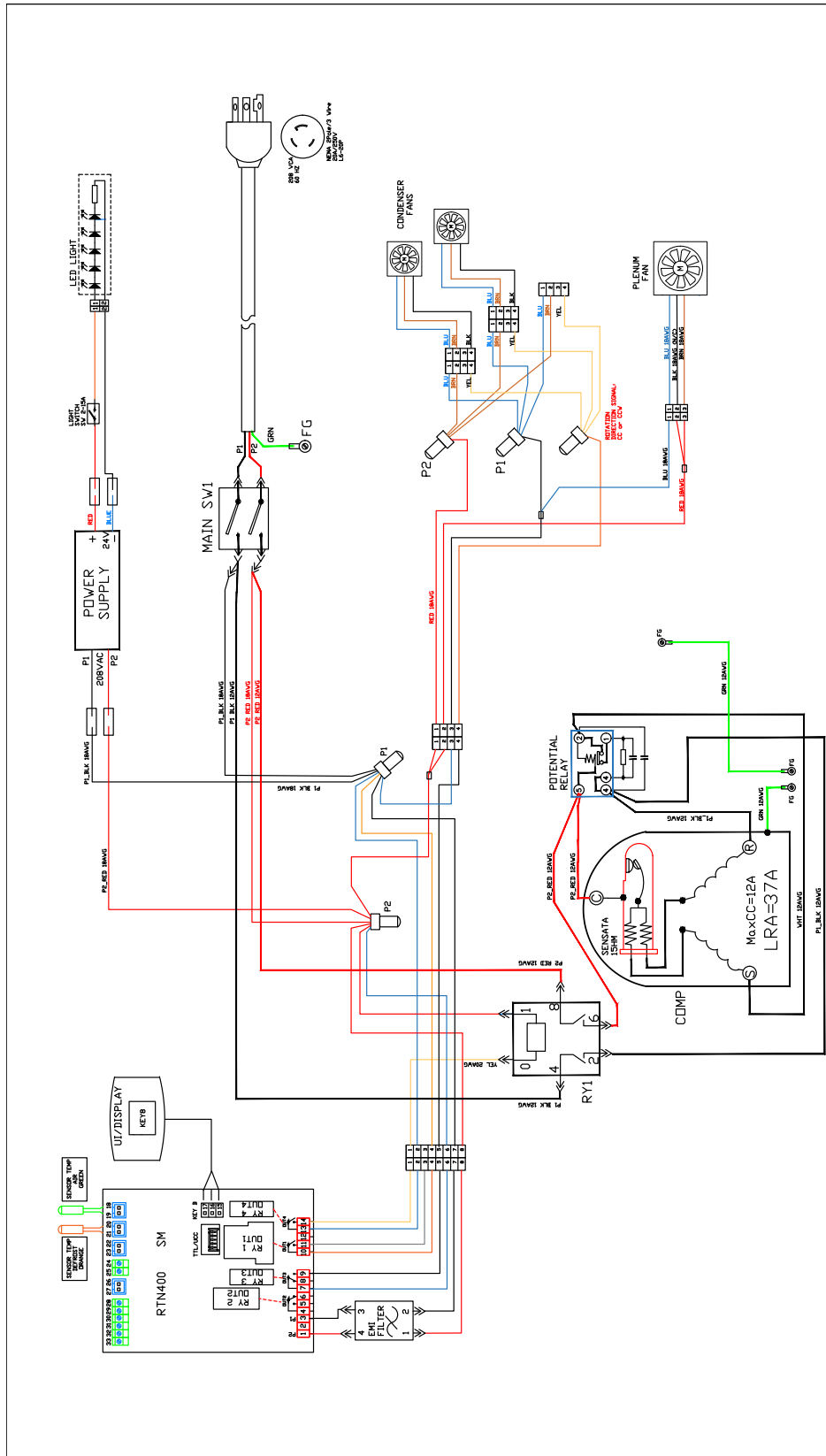
Included

† Actual weights will vary according to optional kits included.

MDN-BA/SA

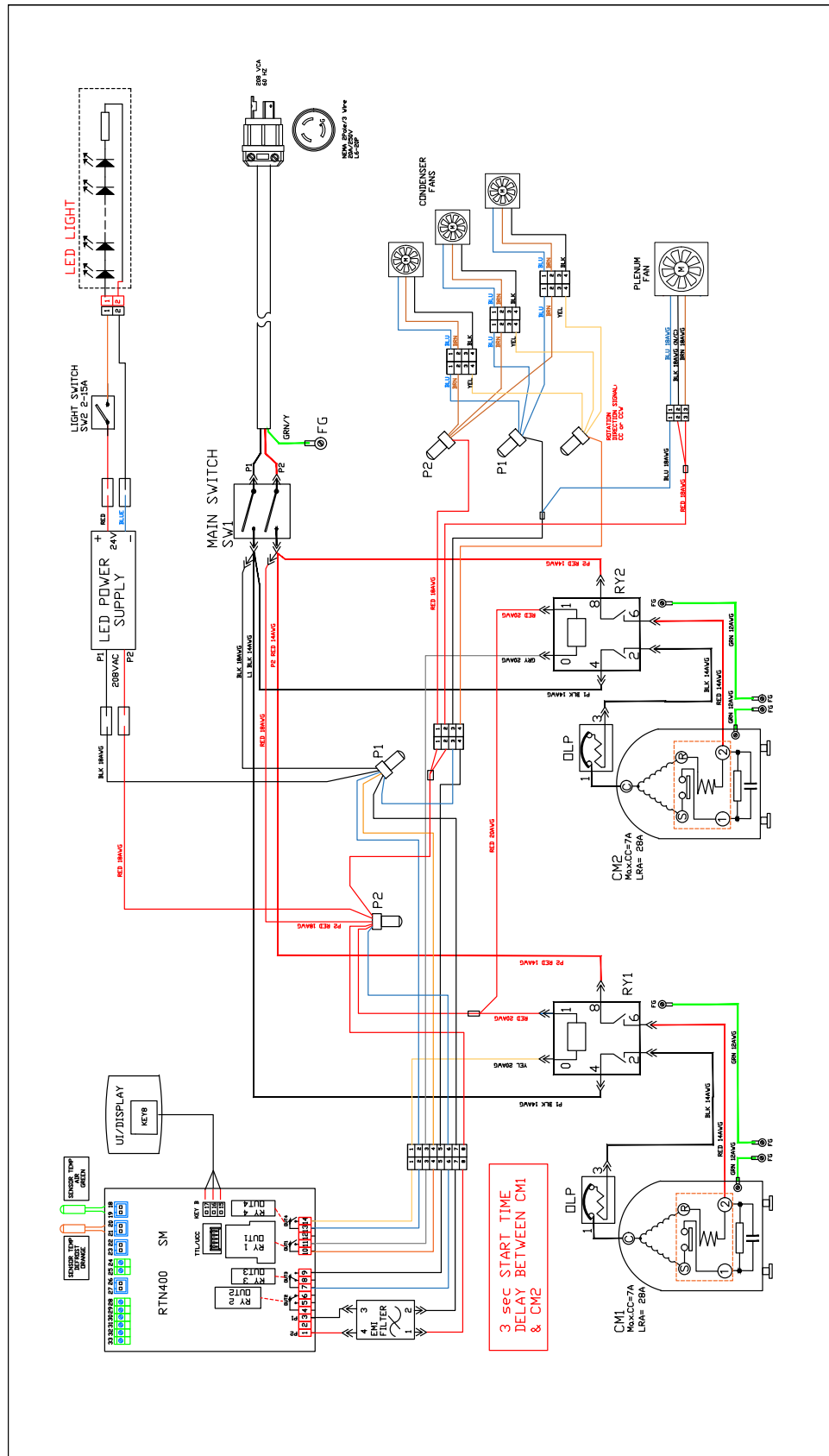
Dairy / Deli /
Beverage / Produce

Wiring Diagram MDN3575BA/SA



Wiring Diagram MDN4775BA/SA

MDN-BA/SA
Dairy / Deli /
Beverage / Produce



MDN-BA/SA

Dairy / Deli /
Beverage / Produce



Scan the QR code with your mobile device to access additional product information or order parts.

Parts may also be ordered at:

parts.husmann.com

Call toll free: 1.855.487.7778

Revision History

Revision A: February 2021: Original Issue

Revision B: March 2021: Updated refrigerant data.