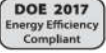




SERVICE DELI
HUSSMANN - Q1-D (CHINO)

REVISION DATE

01/31/17

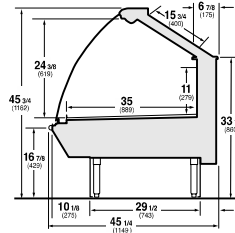


Hussmann refrigerated merchandisers configured for sale for use in the United States meet or surpass the requirements of the DOE 2017 energy efficiency standards.

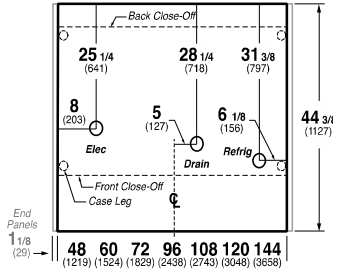
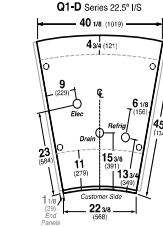
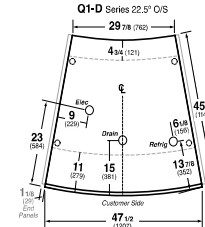
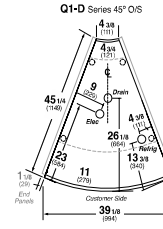
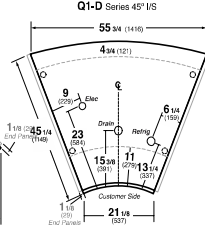
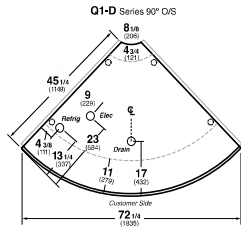
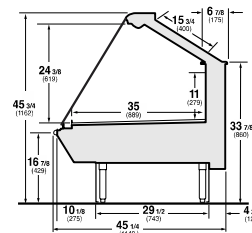


Q1-DC/DS Single-Deck Deli

Q1-DC
Curved Glass - Single-Deck Deli



Q1-DS
Straight Glass - Single-Deck Deli



REFRIGERATION DATA:

CASE LENGTHS/ WEDGES	CASE USAGE	CAPACITY *** (BTU/HR/FT) (TOTAL FOR)		TEMPERATURE (°F)			VELOCITY (FT/MIN)
		RATING CONDITION		EVAPORATOR		DISCHARGE AIR	
		NSF 7	AHRI 1200	NSF 7	AHRI 1200	** (°F)	
4' 5' 6' 8' 10' 12'	DELI	430	430	20	20	26~28	150~180
22.5° IS *	DELI	1200	1200	20	20	26~28	150~180
22.5° OS *	DELI	1000	1000	20	20	26~28	150~180
45° IS *	DELI	1200	1200	20	20	26~28	150~180
45° OS *	DELI	1000	1000	20	20	26~28	150~180
90° OS *	DELI	3675	3675	20	20	26~28	150~180

CASE LENGTHS	EST. REFG. CHR.G. 404A (LBS)	GLYCOL (20°F INLET, 6° RISE)	
		GPM	PSI
4'	0.5	0.6	1.5
5'	0.7	0.8	2.4
6'	0.7	0.9	3.5
8'	1.0	1.2	1.6
10'	1.4	1.5	2.8
12'	1.5	1.8	3.3
22.5° IS	0.3	0.4	0.5
22.5° OS	0.3	0.3	0.4
45° IS	0.3	0.4	0.5
45° OS	0.2	0.3	0.2
90° OS	0.3	1.1	2.4

* ADJACENT STRAIGHT CASE(S) REQUIRED

**FRONT DISCHARGE AIR MEASURED INSIDE AIR CURTAIN HONEYCOMB

***REFRIGERATION NOTES:

- 1) BTU'S INCLUDE CANOPY LIGHTS.
- 2) AHRI 1200 RATING POINT FOR ENERGY CONSUMPTION COMPARISON ONLY
- 3) USE DEW POINT FOR HIGH GLIDE REFRIGERANTS. CARE SHOULD BE TAKEN TO USE THE DEW POINT IN P/T TABLES FOR MEASURING AND ADJUSTING SUPERHEAT. ADJUST EVAPORATOR PRESSURE AS NEEDED TO MAINTAIN THE DISCHARGE AIR TEMPERATURE SHOWN.
- 4) RATING CONDITION IS NSF TYPE I, 75°F/55% RH

REFRIGERATION DATA CONTINUED:

ELEC. THERMOSTAT / AIR SENSOR SETTINGS		DEFROST TYPE	TIME (MIN)	DEFROST FREQUENCY (#/DAY)	TERM. TEMP (°F) COIL ONLY	DRIP TIME	DEFROST WATER (LBS/DAY/FT)
USAGE	CUT IN (°F)						
DELI	29	OFF TIME	40	4	45	N/A	3.3

END PANEL WIDTH KEY		
# OF END PNLS	END PNL WIDTH (IN.)	TOTAL ADDED LENGTH (IN.)
1	1.125	1.125
2	1.125	2.25

ELECTRICAL DATA:

STANDARD FANS, HEATERS, LED LIGHTS (115 VOLT)

CASE LENGTH	EVAPORATOR FANS					AIRSWEEP FANS				CANOPY LIGHTS LED		OPTIONAL LED SHELF LIGHTS		MAX. LED LOAD (W/ ALL OPTIONS)		CONVENIENCE OUTLETS (OPTIONAL)		
	# OF EVAP FANS	BLADE DIA. (IN.)	BLADE PITCH (°)	AMPS	WATTS	# OF AIRSWEEP FANS	AMPS	WATTS	AMPS	WATTS	AMPS	WATTS	AMPS	WATTS	# OUTLETS	VOLTS	AMPS	
4'	1	6.7	20	0.1	8	1	0.1	9	0.1	15	N/A	N/A	0.1	15	1	115	15	
5'	1	6.7	25	0.1	8	1	0.1	9	0.2	21	N/A	N/A	0.2	21	1	115	15	
6'	2	6.7	15	0.2	16	2	0.2	18	0.2	26	N/A	N/A	0.2	26	1	115	15	
8'	2	6.7	20	0.2	16	2	0.2	18	0.3	31	N/A	N/A	0.3	31	1	115	15	
10'	2	6.7	25	0.2	16	3	0.2	26	0.4	41	N/A	N/A	0.4	41	1	115	15	
12'	4	6.7	20	0.5	32	3	0.2	26	0.4	46	N/A	N/A	0.4	46	2	115	30	
22.5° IS	1	6.7	10	0.1	8	1	0.1	9	0.1	10	N/A	N/A	0.1	10	N/A	N/A	N/A	
22.5° OS	1	6.7	15	0.1	8	1	0.1	9	0.1	10	N/A	N/A	0.1	10	N/A	N/A	N/A	
45° IS	1	6.7	20	0.1	8	1	0.1	9	0.1	9	N/A	N/A	0.1	9	N/A	N/A	N/A	
45° OS	1	6.7	10	0.1	8	1	0.1	9	0.0	4	N/A	N/A	0.0	4	N/A	N/A	N/A	
90° OS	2	6.7	15	0.2	16	2	0.2	18	0.1	9	N/A	N/A	0.1	9	N/A	N/A	N/A	

OPTIONAL HIGH OUTPUT LED LIGHTS (115 VOLT)

CASE LENGTH	CANOPY LIGHTS		OPTIONAL SHELF		MAX. H.O. LED LOAD	
	AMPS	WATTS	AMPS	WATTS	AMPS	WATTS
4'	0.2	26	N/A	N/A	0.2	26
5'	0.3	30	N/A	N/A	0.3	30
6'	N/A	N/A	N/A	N/A	N/A	N/A
8'	0.5	52	N/A	N/A	0.5	52
10'	0.5	61	N/A	N/A	0.5	61
12'	0.7	78	N/A	N/A	0.7	78
22.5° IS	N/A	N/A	N/A	N/A	N/A	N/A
22.5° OS	N/A	N/A	N/A	N/A	N/A	N/A
45° OS	N/A	N/A	N/A	N/A	N/A	N/A
45° IS	N/A	N/A	N/A	N/A	N/A	N/A
90° OS	N/A	N/A	N/A	N/A	N/A	N/A