

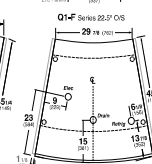
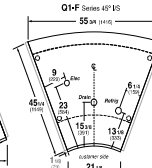
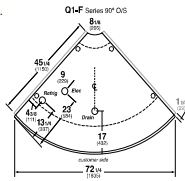
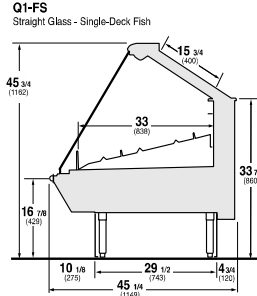
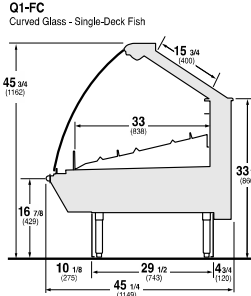
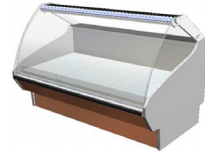


DELI SERVICE CASE
HUSSMANN - Q1-FC / FS (CHINO)

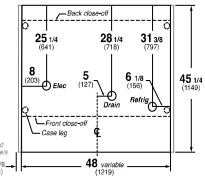
REVISION DATE 11/21/22



Hussmann refrigerated merchandisers configured for sale for use in the United States meet or surpass the requirements of the DOE 2017 energy efficiency standards.



Q1-FC/FS Single-Deck Fish



REFRIGERATION DATA:

CASE LENGTHS	CASE USAGE	CAPACITY *** (BTU/HR/FT)		TEMPERATURE (°F)			VELOCITY (FT/MIN)
		RATING CONDITION		EVAPORATOR		DISCHARGE AIR ** (°F)	
		NSF 7	AHRI 1200	NSF 7	AHRI 1200	NSF 7	
4', 5', 6', 8', 12'	FISH	225	225	24	24	28~30	125~150
22.5° IS	FISH	600	600	24	24	28~30	125~150
22.5° OS	FISH	500	500	24	24	28~30	125~150
45° IS *	FISH	600	600	24	24	28~30	125~150
45° OS *	FISH	500	500	24	24	28~30	125~150
90° OS	FISH	1000	1000	24	24	28~30	125~150

CASE LENGTHS	EST. REFG. CHRGS. (LBS)	20°F GLYCOL 6° RISE	
		GPM	PSI
4'	0.5	0.3	0.6
5'	0.7	0.4	1.0
6'	0.7	0.5	1.5
8'	1.0	0.6	0.6
12'	1.4	0.9	1.5
22.5° IS	0.3	0.2	0.1
22.5° OS	0.3	0.2	0.0
45° IS	0.3	0.2	0.0
45° OS	0.2	0.2	0.0
90° OS	0.3	0.3	0.4

* ADJACENT CASE REQUIRED

**FRONT DISCHARGE AIR MEASURED INSIDE AIR CURTAIN HONEYCOMB

***REFRIGERATION NOTES:

- 1) BTU'S INCLUDE ONE ROW OF CANOPY LIGHTS
- 2) ADD 10 BTU'S PER FOOT/PER SHELF ROW FOR OPTIONAL LED SHELF LIGHTS
- 3) THE PRINCIPAL COOLING EFFECT IN FISH CASES IS ACCOMPLISHED WITH A TRADITIONAL ICE BED. THE REFRIGERATION PRESERVES THE ICE AND MAINTAINS A COLD PROTECTIVE LAYER OVER THE PRODUCT.
- 4) AHRI 1200 RATING POINT FOR ENERGY CONSUMPTION COMPARISON ONLY
- 5) USE DEW POINT FOR HIGH GLIDE REFRIGERANTS. CARE SHOULD BE TAKEN TO USE THE DEW POINT IN P/T TABLES FOR MEASURING AND ADJUSTING SUPERHEAT. ADJUST EVAPORATOR PRESSURE AS NEEDED TO MAINTAIN THE DISCHARGE AIR TEMPERATURE SHOWN.
- 6) THE PRINCIPAL COOLING EFFECT IN FISH CASES IS ACCOMPLISHED WITH A TRADITIONAL ICE BED. THE REFRIGERATION PRESERVES THE ICE AND MAINTAINS A COLD PROTECTIVE LAYER OVER THE PRODUCT.
- 7) RATING CONDITION IS NSF TYPE I, 75°F/55% RH

REFRIGERATION DATA CONTINUED:

ELEC. THERMOSTAT / AIR SENSOR SETTINGS			DEFROST TYPE	TIME (MIN)	DEFROST FREQUENCY (#/DAY)	TERM. TEMP (°F) COIL ONLY	DRIP TIME	DEFROST WATER (LBS/DAY/FT)
USAGE	CUT IN (°F)	CUT OUT (°F)						
FISH	31	28	OFF	30	4	41.5	N/A	1.25

END PANEL WIDTH KEY		
# OF END PNLS	END PNL WIDTH (IN.)	TOTAL ADDED LENGTH (IN.)
1	1.125	1.125
2	1.125	2.25

ELECTRICAL DATA:

STANDARD FANS, HEATERS, LED LIGHTS (115 VOLT)

CASE LENGTH	EVAPORATOR FANS				AIRSWEEP FANS		CANOPY LIGHTS LED		LED SHELF LIGHTS		MAX. LED LOAD (W/ ALL OPTIONS)		ANTI-SWEAT HEATERS (ON FAN CIRCUIT)		CONVENIENCE OUTLETS (OPTIONAL)			
	# OF EVAP FANS	BLADE DIA. (IN.)	BLADE PITCH (°)	AMPS	WATTS	AMPS	WATTS	AMPS	WATTS	AMPS	WATTS	AMPS	WATTS	AMPS	WATTS	# OUTLETS	VOLTS	AMPS
4'	1	6.7	10	0.29	24	0.08	9	0.13	15	N/A	N/A	0.13	15	N/A	N/A	1	115	15
5'	1	6.7	10	0.29	24	0.08	9	0.18	21	N/A	N/A	0.18	21	N/A	N/A	1	115	15
6'	2	6.7	10	0.58	48	0.15	18	0.17	20	N/A	N/A	0.17	20	N/A	N/A	1	115	15
8'	2	6.7	10	0.58	48	0.15	18	0.27	31	N/A	N/A	0.27	31	N/A	N/A	1	115	15
12'	4	6.7	10	1.16	96	0.23	26	0.40	46	N/A	N/A	0.40	46	N/A	N/A	2	115	30
22.5° IS	1	6.7	10	0.29	24	0.08	9	0.09	10	N/A	N/A	0.09	10	N/A	N/A	N/A	N/A	N/A
22.5° OS	1	6.7	10	0.29	24	0.08	9	0.09	10	N/A	N/A	0.09	10	N/A	N/A	N/A	N/A	N/A
45° IS	1	6.7	10	0.29	24	0.08	9	0.04	4	N/A	N/A	0.04	4	N/A	N/A	N/A	N/A	N/A
45° OS	1	6.7	10	0.29	24	0.08	9	0.04	4	N/A	N/A	0.04	4	N/A	N/A	N/A	N/A	N/A
90° OS	2	6.7	10	0.58	48	0.15	18	0.13	15	N/A	N/A	0.13	15	N/A	N/A	N/A	N/A	N/A

OPTIONAL HIGH OUTPUT LED LIGHTS (115 VOLT)

CASE LENGTH	CANOPY LIGHTS H.O. LED		SHELF LIGHTS H.O. LED		MAX. H.O. LED LOAD	
	AMPS	WATTS	AMPS	WATTS	AMPS	WATTS
4'	0.23	26	N/A	N/A	0.23	26
5'	0.26	30	N/A	N/A	0.26	30
6'	N/A	N/A	N/A	N/A	N/A	N/A
8'	0.45	52	N/A	N/A	0.45	52
12'	0.68	78	N/A	N/A	0.68	78
22.5° IS	N/A	N/A	N/A	N/A	N/A	N/A
22.5° OS	N/A	N/A	N/A	N/A	N/A	N/A
45° IS	N/A	N/A	N/A	N/A	N/A	N/A
45° OS	N/A	N/A	N/A	N/A	N/A	N/A
90° OS	0.23	26	N/A	N/A	0.23	26