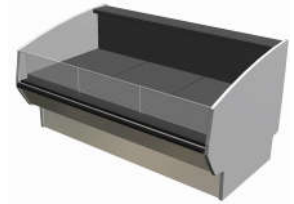
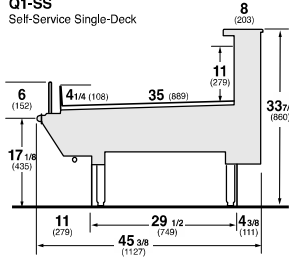




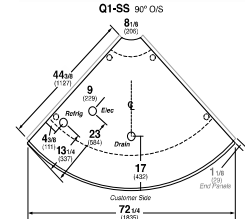
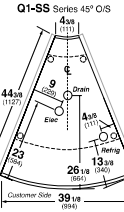
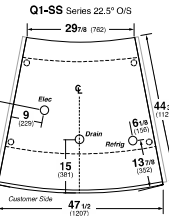
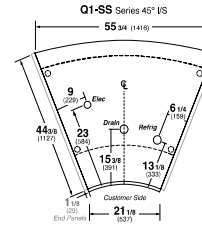
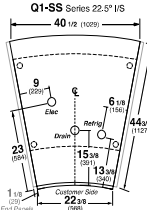
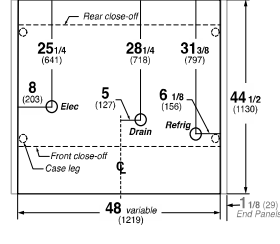
Hussmann refrigerated merchandisers configured for sale for use in the United States meet or surpass the requirements of the DOE 2017 energy efficiency standards.



Q1-SS
Self-Service Single-Deck



Q1-SS Single-Deck Deli



REFRIGERATION DATA:

CASE LENGTHS/ WEDGES	CASE USAGE	CAPACITY *** (BTU/HR/FT) (TOTAL FOR WEDGES)		TEMPERATURE (°F)				VELOCITY (FT/MIN)
		RATING CONDITION		EVAPORATOR		DISCHARGE AIR ** (°F)		
		NSF 7	AHRI 1200	NSF 7	AHRI 1200	NSF 7	NSF 7	
4', 5', 6', 8', 10', 12'	DELI / DAIRY	560	560	20	20	26-30	160-170	160-170
22.5° IS *	DELI / DAIRY	2400	2400	20	20	26-30	160-170	160-170
22.5° OS	DELI / DAIRY	1800	1800	20	20	26-30	160-170	160-170
45° OS *	DELI / DAIRY	2400	2400	20	20	26-30	160-170	160-170
45° IS *	DELI / DAIRY	1800	1800	20	20	26-30	160-170	160-170
90° OS *	DELI / DAIRY	3600	3600	20	20	26-30	160-170	160-170
REAR STORAGE	DELI / DAIRY	100	90	20	26	30-34	380-600	

CASE LENGTHS	EST. REFG. CHRG. 404a (LBS)	GLYCOL (20°F INLET, 6° RISE)			
		FRONT		REAR STORAGE	
		GPM	PSI	GPM	PSI
4'	0.5	0.8	1.9	0.1	0.0
5'	0.7	1.0	3.1	0.2	0.1
6'	0.7	1.2	4.5	0.2	0.2
8'	1.0	1.5	2.0	0.3	0.4
10'	1.4	1.9	3.6	0.3	0.6
12'	1.5	2.2	4.2	0.4	0.8
22.5° IS	0.3	0.8	1.4	N/A	N/A
22.5° OS	0.3	0.6	1.0	N/A	N/A
45° OS	0.3	0.7	1.4	N/A	N/A
45° IS	0.2	0.6	0.6	N/A	N/A
90° OS	0.3	1.1	2.3	N/A	N/A

*ADJACENT CASE(S) REQUIRED

**FRONT DISCHARGE AIR MEASURED INSIDE AIR CURTAIN HONEYCOMB; REAR STORAGE MEASURED AT EXIL TO COIL

***REFRIGERATION NOTES:

- 1) BTU'S INCLUDE ONE ROW CANOPY LIGHTS
- 2) AHRI 1200 RATING POINT FOR ENERGY CONSUMPTION COMPARISON ONLY
- 3) USE DEW POINT FOR HIGH GLIDE REFRIGERANTS. CARE SHOULD BE TAKEN TO USE THE DEW POINT IN P/T TABLES FOR MEASURING AND ADJUSTING SUPERHEAT. ADJUST EVAPORATOR PRESSURE AS NEEDED TO MAINTAIN THE DISCHARGE AIR TEMPERATURE SHOWN.
- 4) RATING CONDITION IS NSF TYPE I, 75°F/55% RH

REFRIGERATION DATA CONTINUED:

LOCATION	USAGE	ELEC. THERMOSTAT / AIR SENSOR SETTINGS		DEFROST TYPE	TIME (MIN)	DEFROST FREQUENCY (#/DAY)	TERM. TEMP (°F) AIR	DRIP TIME (MIN)	DEFROST WATER (LBS/DAY/FT)
		CUT IN (°F)	CUT OUT (°F)						
FRONT	DELI / DAIRY	29	26	OFF TIME	30	4	48	NA	4.2
REAR STORAGE	DELI / DAIRY	35	32						

END PANEL WIDTH KEY		
# OF END PNLS	END PNL WIDTH (IN.)	TOTAL ADDED LENGTH (IN.)
1	1.125	1.125
2	1.125	2.25

ELECTRICAL DATA:

STANDARD FANS, HEATERS, LED LIGHTS (115 VOLT)

CASE LENGTH	EVAPORATOR FANS; SELF-SERVICE SECTION				EVAPORATOR FANS; REAR STORAGE		CANOPY LIGHTS LED		OPTIONAL LED SHELF LIGHTS		MAX. LED LOAD (W/ ALL OPTIONS)		ANTI-SWEAT HEATERS		CONVENIENCE OUTLETS (OPTIONAL)			
	# OF EVAP FANS	BLADE DIA. (IN.)	BLADE PITCH (°)	AMPS	WATTS	AMPS	WATTS	AMPS	WATTS	AMPS	WATTS	AMPS	WATTS	AMPS	WATTS	# OUTLETS	VOLTS	AMPS
4'	1	6.75	25	0.12	8	0.30	9	0.09	10	NA	NA	0.09	10	0.20	23	1	115	15
5'	2	6.75	15	0.24	16	0.30	9	0.11	13	NA	NA	0.11	13	0.25	29	1	115	15
6'	2	6.75	25	0.24	16	0.30	9	0.13	15	NA	NA	0.13	15	0.30	34	1	115	15
8'	2	6.75	25	0.24	16	0.30	9	0.18	21	NA	NA	0.18	21	0.40	46	1	115	15
10'	4	6.75	15	0.48	32	0.30	24	0.23	26	NA	NA	0.23	26	0.50	57	1	115	15
12'	3	6.75	25	0.36	24	0.30	24	0.27	31	NA	NA	0.27	31	0.59	68	2	115	30
22.5° IS	1	6.75	15	0.12	8	N/A	N/A	0.04	4	NA	NA	0.04	4	0.05	6	NA	NA	NA
22.5° OS	1	6.75	25	0.12	8	N/A	N/A	0.04	5	NA	NA	0.04	5	0.05	6	NA	NA	NA
45° OS	1	6.75	10	0.12	8	N/A	N/A	0.09	10	NA	NA	0.09	10	0.05	6	NA	NA	NA
45° IS	1	6.75	15	0.12	8	N/A	N/A	0.02	2	NA	NA	0.02	2	0.05	6	NA	NA	NA
90° OS	2	6.75	15	0.24	16	N/A	N/A	0.04	4	NA	NA	0.04	4	0.20	23	NA	NA	NA

OPTIONAL HIGH OUTPUT LED LIGHTS (115 VOLT)

CASE LENGTH	CANOPY LIGHTS H.O. LED		OPTIONAL SHELF		MAX. H.O. LED LOAD	
	AMPS	WATTS	AMPS	WATTS	AMPS	WATTS
4'	0.13	15	NA	NA	0.13	15
5'	NA	NA	NA	NA	NA	NA
6'	0.23	26	NA	NA	0.23	26
8'	0.26	30	NA	NA	0.26	30
10'	NA	NA	NA	NA	NA	NA
12'	NA	NA	NA	NA	NA	NA
22.5° IS	NA	NA	NA	NA	NA	NA
22.5° OS	NA	NA	NA	NA	NA	NA
45° OS	NA	NA	NA	NA	NA	NA
45° IS	NA	NA	NA	NA	NA	NA
90° OS	NA	NA	NA	NA	NA	NA