



SELF-SERVICE DELI & MEAT
HUSSMANN - Q2-SS-R (CHINO)

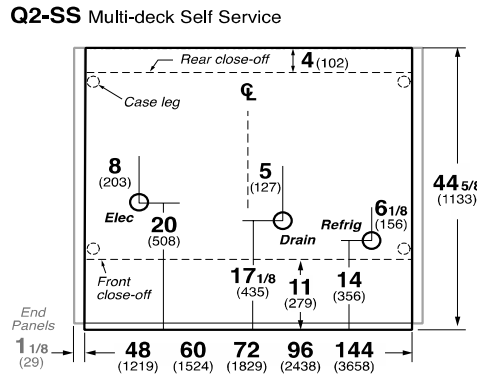
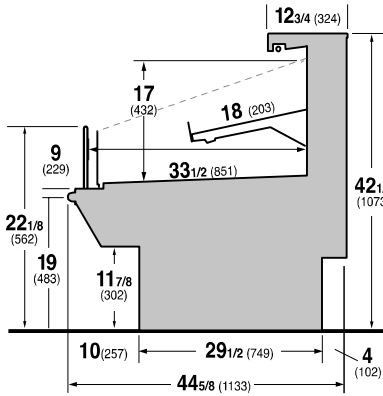
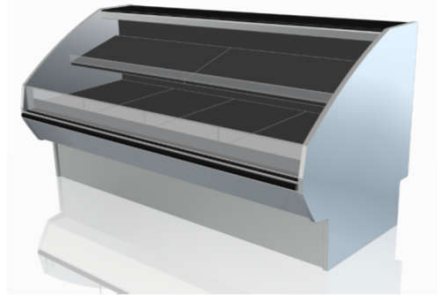
REVISION DATE

06/05/19



Hussmann refrigerated merchandisers configured for sale for use in the United States meet or surpass the requirements of the DOE 2017 energy efficiency standards.

Q2-SS
 Multi-deck Self-Service



REFRIGERATION DATA:

CASE LENGTHS/ WEDGES	CASE USAGE	CAPACITY *** (BTU/HR/FT) (TOTAL FOR WEDGES)		TEMPERATURE (°F)			VELOCITY (FT/MIN)
		RATING CONDITION		EVAPORATOR		DISCHARGE AIR ** (°F)	
		NSF 7	AHRI 1200	NSF 7	AHRI 1200	NSF 7	
4', 6', 8', 10', 12'	DELI	640	640	22	22	28~30	150~175
22.5 OS	DELI	2995	2995	22	22	30~32	150~175
90° OS	DELI	2410	2410	22	22	28~30	150~175
REAR STORAGE	DELI	100	90	22	22	30~34	380~600

CASE LENGTH	EST. REFG. CHRG. 404a (LBS)	GLYCOL (20°F INLET, 6° RISE) FRONT		GLYCOL (20°F INLET, 6° RISE) REAR STORAGE	
		GPM	PSI	GPM	PSI
4'	0.5	0.9	2.4	0.1	0.0
6'	0.7	1.4	5.4	0.2	0.2
8'	1.0	1.8	2.5	0.3	0.4
10'	1.4	2.2	4.3	0.3	0.6
12'	1.5	2.6	5.1	0.4	0.8
90° OS	0.3	0.7	1.4	N/A	N/A

**FRONT DISCHARGE AIR MEASURED INSIDE AIR CURTAIN HONEYCOMB; REAR STORAGE MEASURED AT EXIT TO COIL

*****REFRIGERATION NOTES:**

- 1) BTU'S DO NOT INCLUDE LIGHTS
- 2) AHRI 1200 RATING POINT FOR ENERGY CONSUMPTION COMPARISON ONLY
- 3) USE DEW POINT FOR HIGH GLIDE REFRIGERANTS. CARE SHOULD BE TAKEN TO USE THE DEW POINT IN P/T TABLES FOR MEASURING AND ADJUSTING SUPERHEAT. ADJUST EVAPORATOR PRESSURE AS NEEDED TO MAINTAIN THE DISCHARGE AIR TEMPERATURE SHOWN.
- 4) RATING CONDITION IS NSF TYPE I, 75°F/55% RH

REFRIGERATION DATA CONTINUED:

LOCATION	ELEC. THERMOSTAT / AIR SENSOR SETTINGS		DEFROS T TYPE	TIME (MIN)	DEFROST FREQUENCY (#/DAY)	TERM. TEMP (°F) COIL ONLY	DRIP TIME	DEFROST WATER (LBS/DAY/FT)
	USAGE	CUT IN (°F)						
FRONT	DELI	31	28	OFF TIME	35	4	N/A	4.2
REAR STORAGE	DELI	35	32					0.7

END PANEL WIDTH KEY		
# OF END PNLS	END PNL WIDTH (IN.)	TOTAL ADDED LENGTH (IN.)
1	1.125	1.125
2	1.125	2.25

ELECTRICAL DATA: STANDARD FANS, HEATERS, LED LIGHTS (115 VOLT)

CASE LENGTH	EVAPORATOR FANS; SELF-SERVICE SECTION					EVAPORATOR FANS; REAR STORAGE		CANOPY LIGHTS LED		OPTIONAL LED SHELF LIGHTS		MAX. LED LOAD (W/ ALL OPTIONS)		ANTI-SWEAT HEATERS		CONVENIENCE OUTLETS (OPTIONAL)		
	# OF EVAP FANS	BLADE DIA. (IN.)	BLADE PITCH (°)	AMPS	WATTS	AMPS	WATTS	AMPS	WATTS	AMPS	WATTS	AMPS	WATTS	AMPS	WATTS	# OUTLET S	VOLTS	AMPS
4'	2	6.7	15	0.24	16	0.30	9	0.09	10	0.09	10	0.18	21	0.17	20	N/A	N/A	N/A
6'	3	6.7	15	0.36	24	0.30	9	0.13	15	0.13	15	0.27	31	0.26	30	N/A	N/A	N/A
8'	4	6.7	15	0.48	32	0.30	9	0.18	21	0.18	21	0.36	41	0.35	40	N/A	N/A	N/A
10'	4	6.7	20	0.48	32	0.30	9	0.23	26	0.23	26	0.45	52	0.43	50	N/A	N/A	N/A
12'	6	6.7	15	0.72	48	0.30	9	0.27	31	0.27	31	0.54	62	0.52	60	N/A	N/A	N/A
22.5° OS	1	4	NA	1.8	48	0.30	9	0.27	31	0.27	31	0.54	62	0.52	60	N/A	N/A	N/A
90° OS	2	6.7	20	0.24	16	N/A	N/A	0.04	5	0.04	5	0.09	10	0.26	30	N/A	N/A	N/A

OPTIONAL HIGH OUTPUT LED LIGHTS (115 VOLT)

CASE LENGTH	CANOPY LIGHTS H.O. LED		OPTIONAL SHELF H.O. LED		MAX. H.O. LED LOAD	
	AMPS	WATTS	AMPS	WATTS	AMPS	WATTS
4'	0.13	15	0.26	30	0.40	46
6'	0.23	26	0.45	52	0.68	78
8'	0.26	30	0.53	61	0.79	91
10'	N/A	N/A	N/A	N/A	N/A	N/A
12'	0.40	46	0.79	91	1.19	137
22.5° OS	N/A	N/A	N/A	N/A	N/A	N/A
90° OS	N/A	N/A	N/A	N/A	N/A	N/A