



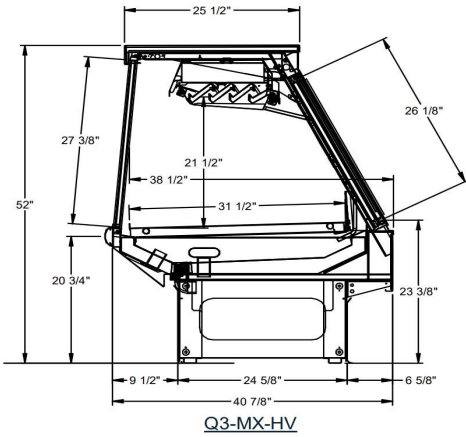
MEAT/FISH SERVICE
HUSSMANN - Q3-MX-HV-R (CHINO)

REVISION DATE

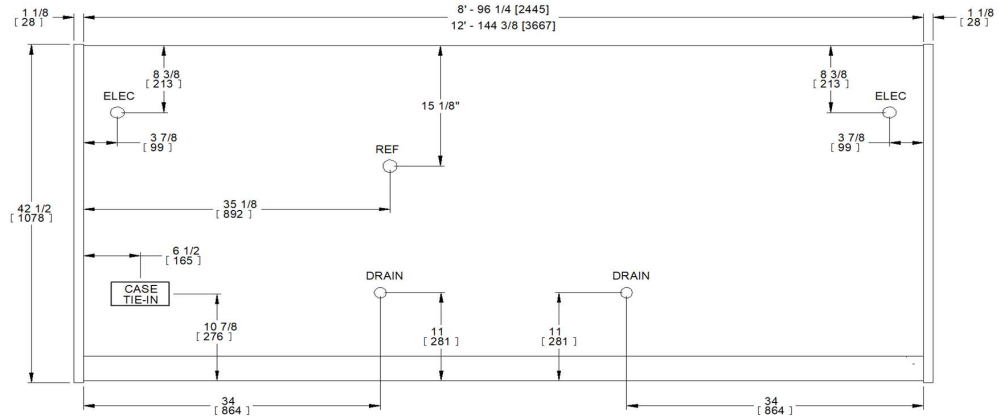
04/11/25

DOE 2017
Energy Efficiency
Compliant

Hussmann refrigerated merchandisers configured for sale for use in the United States meet or surpass the requirements of the DOE 2017 energy efficiency standards.



Q3-MX-HV



REFRIGERATION DATA:

CASE LENGTHS	CASE USAGE	CAPACITY *** (BTU/HR/FT)		TEMPERATURE (°F)			VELOCITY (FT/MIN)
		RATING CONDITION		EVAPORATOR (°F)		DISCHARGE AIR ** (°F)	
		NSF 7	AHRI 1200	NSF 7	AHRI 1200	NSF 7	
8', 12' - NO SHELF	MEAT/FISH	325	285	20	20	30~35	50~75

CASE LENGTHS	EST. REFG. CHR. 404A (LBS)	GLYCOL (20°F INLET, 6° RISE)			
		GRAVITY		SERPENTINE	
		GPM	PSI	GPM	PSI
8'	2.2	0.6	2.7	0.4	2.4
12'	3.5	0.8	6.3	0.6	5.6

**DISCHARGE AIR MEASURED BELOW GRAVITY COIL DRIP TRAY

***REFRIGERATION NOTES:

- 1) BTU'S INCLUDE CANOPY LIGHTS. ADD 10 BTUS/FT FOR EACH ADDITIONAL ROW OF LIGHTS
- 2) ADJUSTMENTS TO CONTROL SETTINGS SHOULD BE MADE IN 1°F INCREMENTS DEPENDING UPON MEAT DEPT AMBIENT CONDITIONS
- 3) AHRI 1200 RATING POINT FOR ENERGY CONSUMPTION COMPARISON ONLY
- 4) USE DEW POINT FOR HIGH GLIDE REFRIGERANTS. CARE SHOULD BE TAKEN TO USE THE DEW POINT IN P/T TABLES FOR MEASURING AND ADJUSTING SUPERHEAT. ADJUST EVAPORATOR PRESSURE AS NEEDED TO MAINTAIN THE DISCHARGE AIR TEMPERATURE SHOWN.
- 5) THE PRINCIPAL COOLING EFFECT IN FISH CASES IS ACCOMPLISHED WITH A TRADITIONAL ICE BED. THE REFRIGERATION PRESERVES THE ICE AND MAINTAINS A COLD PROTECTIVE LAYER OVER THE PRODUCT.
- 6) RATING CONDITION IS NSF TYPE I, 75°F/55% RH

REFRIGERATION DATA CONTINUED:

ELEC. THERMOSTAT / AIR SENSOR SETTINGS				DEFROST TYPE	TIME (MIN)	DEFROST FREQUENCY (#/DAY)	TERM. TEMP (°F) COIL ONLY	DRIP TIME	DEFROST WATER (LBS/DAY/FT)
LOCATION	CUT IN (°F)	CUT OUT (°F)	NO SHELF						
GRAVITY COIL DECK COILS	29	28	NO SHELF	OFF TIME	40	3	42	N/A	0.9

END PANEL WIDTH KEY		
# OF END PNLS	END PNL WIDTH (IN.)	TOTAL ADDED LENGTH (IN.)
1	1.125	1.125
2	1.125	2.25

ELECTRICAL DATA:

STANDARD FANS, HEATERS, LED LIGHTS (115 VOLT)

CASE LENGTH	CIRCULATION FANS			STANDARD CANOPY LIGHTS		OPTIONAL ADDITIONAL CANOPY LIGHTS		MAXIMUM LIGHT LOAD (ALL OPTIONS)		CASE SOLENOIDS		MAX ELECTRICAL LOAD	
	# OF FANS	AMPS	WATTS	AMPS	WATTS	AMPS	WATTS	AMPS	WATTS	AMPS	WATTS	AMPS	WATTS
8'	2	0.24	6	0.40	48	0.20	24	0.60	72	0.28	34	1.12	111
12'	3	0.36	9	0.60	72	0.30	36	0.90	107	0.28	34	1.54	150

CONVENIENCE OUTLETS (UP TO 3 OPTIONAL, RATING PER CIRCUIT)		
# OUTLETS	VOLTS	AMPS
1	115	15
1	115	15