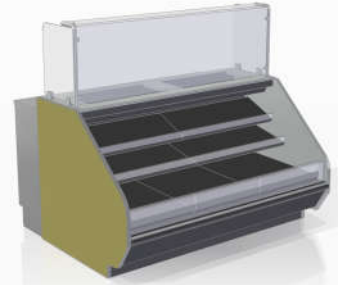
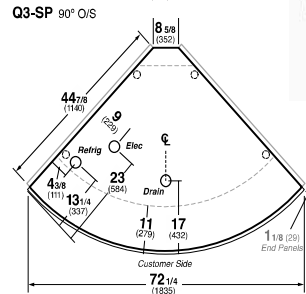
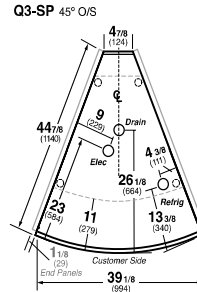
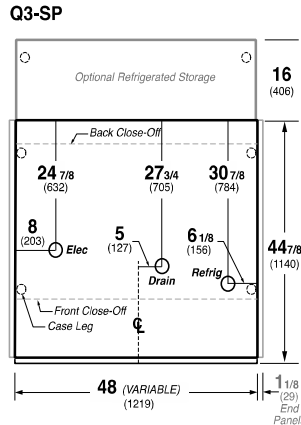
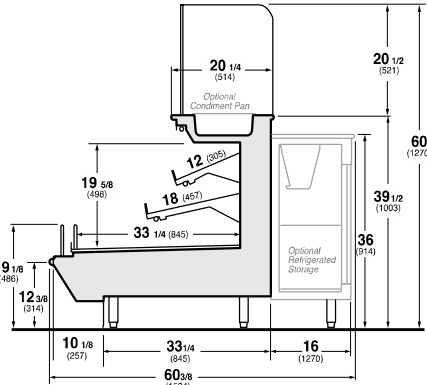




Hussmann refrigerated merchandisers configured for sale for use in the United States meet or surpass the requirements of the DOE 2017 energy efficiency standards.

**Q3-SP**  
Self-Service Front, Prep Top  
Shown with Optional Rear Storage, Condiment Pans



**REFRIGERATION DATA:**

CASE LENGTHS/ WEDGES	CASE USAGE	CAPACITY** (BTU/HR/FT) (TOTAL FOR WEDGES)		TEMPERATURE (°F)			VELOCITY (FT/MIN)
		RATING CONDITION		EVAPORATOR		DISCHARGE AIR * (°F)	
		NSF 7	AHRI 1200	NSF 7	AHRI 1200	NSF 7	
4', 5', 6', 8', 10', 12'	SS DELI	950	805	20	24	28~30	175~200
45° OS	SS DELI	2710	2710	20	20	28~30	200~250
90° OS	SS DELI	5150	5150	20	20	28~30	200~250
REAR STORAGE	SS DELI	100	90	20	26	28~30	380~600

\*FRONT DISCHARGE AIR MEASURED INSIDE AIR CURTAIN HONEYCOMB; REAR STORAGE MEASURED AT EXIT TO COIL

\*\*REFRIGERATION NOTES:

- 1) BTU'S INCLUDE CANOPY LIGHTS. ADD 10 BTUS/SHELF/FT FOR EACH SHELF (LIGHT)
- 2) AHRI 1200 RATING POINT FOR ENERGY CONSUMPTION COMPARISON ONLY
- 3) USE DEW POINT FOR HIGH GLIDE REFRIGERANTS. CARE SHOULD BE TAKEN TO USE THE DEW POINT IN P/T TABLES FOR MEASURING AND ADJUSTING SUPERHEAT. ADJUST EVAPORATOR PRESSURE AS NEEDED TO MAINTAIN THE DISCHARGE AIR TEMPERATURE SHOWN.
- 4) RATING CONDITION IS NSF TYPE I, 75°F/55% RH

CASE LENGTHS	EST. REFG. CHR.G. 404A (LBS)	GLYCOL (20°F INLET, 6° RISE)			
		FRONT		REAR STORAGE	
		GPM	PSI	GPM	PSI
4'	0.5	1.4	3.7	0.1	0.0
5'	0.7	1.7	5.9	0.2	0.0
6'	0.8	2.0	8.3	0.2	0.1
8'	1.1	2.6	3.8	0.2	0.2
10'	1.4	3.2	6.7	0.3	0.4
12'	1.6	3.8	7.7	0.3	0.6
45° OS	0.3	0.8	1.1	N/A	N/A
90° OS	0.3	1.6	3.6	N/A	N/A

**REFRIGERATION DATA CONTINUED:**

LOCATION	ELEC. THERMOSTAT / AIR SENSOR SETTINGS		DEFROST TYPE	TIME (MIN)	DEFROST FREQUENCY (#/DAY)	TERM. TEMP (°F) COIL ONLY	DRIP TIME	DEFROST WATER (LBS/DAY/FT)
	USAGE	CUT IN (°F)						
FRONT	SS DELI	31	28	OFF TIME	30	48	TBD	1.1
REAR STORAGE	SS DELI	33	29					

END PANEL WIDTH KEY		
# OF END PNLs	END PNL WIDTH (IN.)	TOTAL ADDED LENGTH (IN.)
1	1.125	1.125
2	1.125	2.25

**ELECTRICAL DATA:**

**STANDARD FANS, HEATERS, LED LIGHTS (115 VOLT)**

CASE LENGTH	EVAPORATOR FANS; SELF-SERVICE SECTION				EVAPORATOR FANS; REAR STORAGE		CANOPY LIGHTS LED		OPTIONAL LED SHELF LIGHTS		MAX. LED LOAD (W/ ALL OPTIONS)		ANTI-SWEAT HEATERS (ON FAN CIRCUIT)		CONVENIENCE OUTLETS (OPTIONAL)			
	# OF EVAP FANS	BLADE DIA. (IN.)	BLADE PITCH (°)	AMPS	WATTS	AMPS	WATTS	AMPS	WATTS	AMPS	WATTS	AMPS	WATTS	AMPS	WATTS	# OUTLETS	VOLTS	AMPS
4'	2	6.7	25	0.2	16	0.3	9	0.1	10	0.2	21	0.3	31	0.2	23	1	115	15
5'	2	6.7	30	0.2	16	0.3	9	0.1	13	0.2	26	0.3	39	0.2	29	1	115	15
6'	4	6.7	20	0.5	32	0.3	9	0.1	15	0.3	31	0.4	46	0.3	34	1	115	15
8'	4	6.7	25	0.5	32	0.3	9	0.2	21	0.4	41	0.5	62	0.4	46	1	115	15
10'	4	6.7	30	0.5	32	0.3	9	0.2	26	0.5	52	0.7	78	0.5	57	1	115	15
12'	6	6.7	25	0.7	48	0.3	9	0.3	30	0.5	62	0.8	92	0.6	68	2	115	30
45° OS	1	6.7	25	0.8	20	NA	NA	0.0	4	0.1	7	0.1	11	0.1	11	N/A	N/A	N/A
90° OS	3	6.7	25	0.4	24	NA	NA	0.0	4	0.1	7	0.1	11	0.2	29	N/A	N/A	N/A

**OPTIONAL HIGH OUTPUT LED LIGHTS (115 VOLT)**

CASE LENGTH	CANOPY LIGHTS H.O. LED		OPTIONAL SHELF		MAX. H.O. LED LOAD	
	AMPS	WATTS	AMPS	WATTS	AMPS	WATTS
4'	0.1	15	0.3	30	0.4	46
5'	N/A	N/A	N/A	N/A	N/A	N/A
6'	N/A	N/A	N/A	N/A	N/A	N/A
8'	0.3	30	0.5	61	0.8	91
10'	N/A	N/A	N/A	N/A	N/A	N/A
12'	N/A	N/A	N/A	N/A	N/A	N/A
45° OS	N/A	N/A	N/A	N/A	N/A	N/A
90° OS	N/A	N/A	N/A	N/A	N/A	N/A