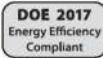
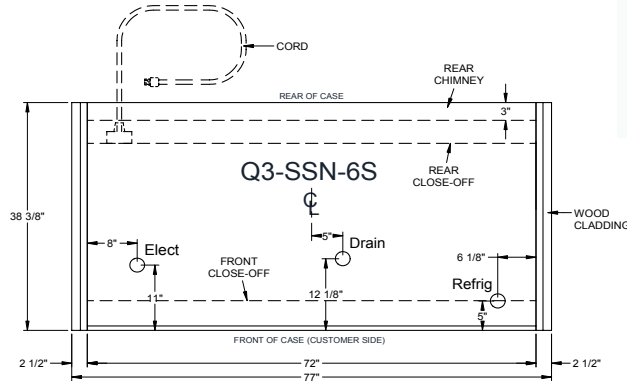
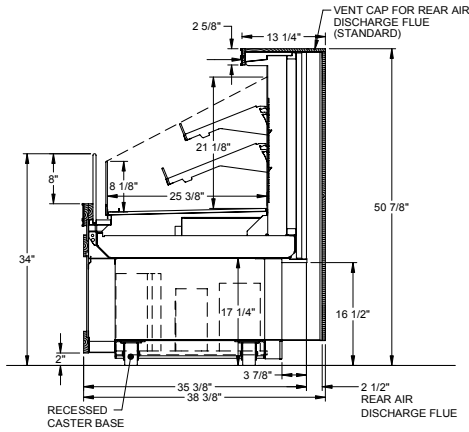




HUSSMANN - Q3-SSN-S



Hussmann refrigerated merchandisers configured for sale for use in the United States meet or surpass the requirements of the DOE 2017 energy efficiency standards.



REFRIGERATION DATA:

CASE LENGTHS	CASE USAGE	CAPACITY *** (BTU/HR/FT)	DISCHARGE AIR ** (°F) (SEE SET POINTS BELOW)	VELOCITY (FT/MIN)
6', 8', 10', 12'	PRODUCE	770	31~34	150~200
6', 8', 10', 12'	DELI	800	28~31	150~200
6', 8', 10', 12'	MEAT	850	26~29	150~200

**FRONT DISCHARGE AIR MEASURED INSIDE AIR CURTAIN HONEYCOMB

***REFRIGERATION NOTES:

- 1) CAPACITY FOR REFERENCE ONLY
- 2) USE DEW POINT FOR HIGH GLIDE REFRIGERANTS. CARE SHOULD BE TAKEN TO USE THE DEW POINT IN P/T TABLES FOR MEASURING AND ADJUSTING SUPERHEAT. ADJUST EVAPORATOR PRESSURE AS NEEDED TO MAINTAIN THE DISCHARGE AIR TEMPERATURE SHOWN.
- 3) RATING CONDITION IS NSF TYPE I, 75°F/55% RH

REFRIGERATION DATA CONTINUED:

ELEC. THERMOSTAT / AIR SENSOR SETTINGS			DEFROST TYPE	FAILSAFE TIME (MIN)	DEFROST FREQUENCY (#/DAY)	TERM. TEMP (°F) COIL ONLY	DRIP TIME	DEFROST WATER (LBS/DAY/FT)
USAGE	SET POINT (°F)	DIFFERENTIAL (°F)						
PRODUCE	28	8	OFF TIME	50	4	48	N/A	4.2
DELI	24	8						4.2
MEAT	20	8						4.2

END PANEL WIDTH KEY		
# OF END PNLS	END PNL WIDTH (IN.)	TOTAL ADDED LENGTH (IN.)
1	1.125	1.125
2	1.125	2.25

ELECTRICAL DATA:

STANDARD FANS, HEATERS, LED LIGHTS (115 VOLT)

CASE LENGTH	EVAPORATOR FANS				CANOPY LIGHTS LED		OPTIONAL LED SHELF LIGHTS		MAX. LED LOAD (W/ ALL OPTIONS)		ANTI-SWEAT HEATERS		CONVENIENCE OUTLETS (OPTIONAL)			
	# OF EVAP FANS	BLADE DIA. (IN.)	BLADE PITCH (°)	AMPS	WATTS	AMPS	WATTS	AMPS	WATTS	AMPS	WATTS	AMPS	WATTS	# OUTLETS	VOLTS	AMPS
6'	3	6.7	20	0.4	24	N/A	N/A	0.1	15	0.1	15	0.26	30	1	115	15
8'	4	6.7	20	0.5	32	N/A	N/A	0.2	21	0.2	21	0.35	40	1	115	15
10'	4	6.7	20	0.5	32	N/A	N/A	0.2	26	0.2	26	0.43	50	1	115	15
12'	6	6.7	20	0.7	48	N/A	N/A	0.3	31	0.3	31	0.52	60	2	115	30

CONDENSING UNIT AND EVAPORATIVE PANS

CASE LENGTH	CONDENSING UNIT				EVAPORATIVE PAN			NEMA PLUG	EST. REFG. CHR.G. (LBS/CU)	
	NOM.HP	REFRIG.	Hz/Ph	VOLTS	RLA	AMPS	VOLTS			WATTS
6'	3/4	R-404A	60 / 1	240	9.0	6.3	240	1500	L14-20P	5.4
8'	1		60 / 1	240	10.0	6.3	240	1500	L14-30P	8.1
10' *	3/4		60 / 1	240	13.6	8.3	240	2000	L14-30P	4.5
12' *	3/4		60 / 1	240	18.0	8.3	240	2000	L14-30P	5.4
6'	3/4	R-448A	60 / 1	240	9.0	6.3	240	1500	L14-20P	3.1
8'	1		60 / 1	240	10.0	6.3	240	1500	L14-30P	3.9
10' *	3/4		60 / 1	240	13.6	8.3	240	2000	L14-30P	3.9 x 2
12' *	3/4		60 / 1	240	18.0	8.3	240	2000	L14-30P	3.8 x 2

* 2 CONDENSING UNITS

OPTIONAL HIGH OUTPUT LED LIGHTS (115 VOLT)

CASE LENGTH	CANOPY LIGHTS H.O. LED		OPTIONAL SHELF		MAX. H.O. LED LOAD	
	AMPS	WATTS	AMPS	WATTS	AMPS	WATTS
6'	N/A	N/A	N/A	N/A	N/A	N/A
8'	N/A	N/A	0.3	30	0.3	30
10'	N/A	N/A	N/A	N/A	N/A	N/A
12'	N/A	N/A	0.4	46	0.4	46