

DELI / BAKERY SERVICE CASE
HUSSMANN - Q4-DV/BV (CHINO)

REVISION DATE 03/24/17

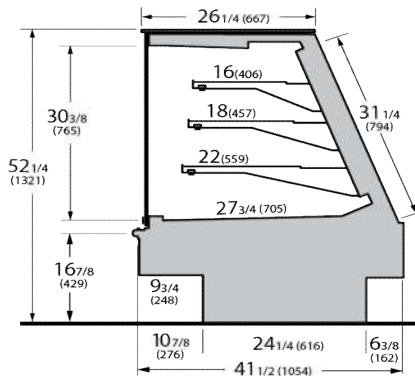
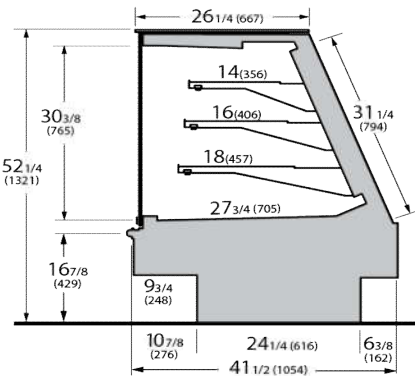


Hussmann refrigerated merchandisers configured for sale for use in the United States meet or surpass the requirements of the DOE 2017 energy efficiency standards.

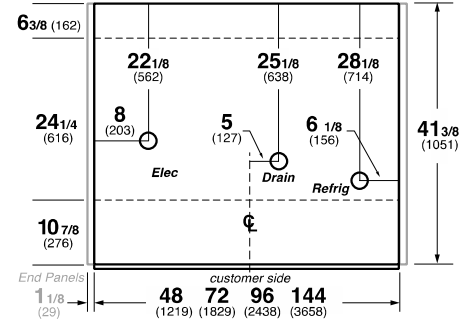


Q4-DV Multi-Deck Service Deli Case

Q4-BV Multi-Deck Service Bakery Case



Q4-DV, BV



REFRIGERATION DATA:

CASE LENGTHS	CASE USAGE	CAPACITY *** (BTU/HR/FT)		TEMPERATURE (°F)			VELOCITY (FT/MIN)
		RATING CONDITION		EVAPORATOR		DISCHARGE AIR ** (°F)	
		NSF 7	AHRI 1200	NSF 7	AHRI 1200	NSF 7	NSF 7
4',5',6',8',12'	DELI / BAKERY	400	400	22	22	25-27	250-400

CASE LENGTHS	EST. REFG. CHR.G. 404a (LBS)	20°F GLYCOL 6° RISE	
		GPM	PSI
4'	0.2	0.6	1.4
5'	0.3	0.8	2.3
6'	0.3	0.9	0.9
8'	0.4	1.2	1.7
12'	0.6	1.7	2.0

**FRONT DISCHARGE AIR MEASURED INSIDE AIR CURTAIN HONEYCOMB

***REFRIGERATION NOTES:

- 1) BTU'S INCLUDE TWO ROWS OF CANOPY LIGHTS. ADD 10 BTUS PER FOOT, PER SHELF FOR OPTIONAL LED LIGHTS
- 2) AHRI 1200 RATING POINT FOR ENERGY CONSUMPTION COMPARISON ONLY
- 3) RATING CONDITION IS NSF TYPE I, 75°F/55% RH

REFRIGERATION DATA CONTINUED:

ELEC. THERMOSTAT / AIR SENSOR SETTINGS			DEFROST TYPE	TIME (MIN)	DEFROST FREQUENCY (#/DAY)	TERM. TEMP (°F) COIL ONLY	DRIP TIME	DEFROST WATER (LBS/DAY/FT)
USAGE	CUT IN (°F)	CUT OUT (°F)						
DELI / BAKERY	27	24	OFF TIME	30	3	45	N/A	1.0

END PANEL WIDTH KEY		
# OF END PNLS	END PNL WIDTH (IN.)	TOTAL ADDED LENGTH (IN.)
1	1.125	1.125
2	1.125	2.25

ELECTRICAL DATA:

STANDARD FANS, HEATERS, LED LIGHTS (115 VOLT)

CASE LENGTH	EVAPORATOR FANS					AIRSWEEP FANS			CANOPY LIGHTS LED		OPTIONAL LED SHELF LIGHTS		MAX. LED LOAD (W/ ALL OPTIONS)		ANTI-SWEAT HEATERS (ON FAN CIRCUIT)		CONVENIENCE OUTLETS (OPTIONAL)		
	# OF EVAP FANS	BLADE DIA. (IN.)	BLADE PITCH (°)	AMPS	WATTS	# OF A/S FANS	AMPS	WATTS	AMPS	WATTS	AMPS	WATTS	AMPS	WATTS	AMPS	WATTS	# OUTLETS	VOLTS	AMPS
4'	2	6.7	20	0.24	16	1	0.04	5	0.30	35	0.27	31	0.57	66	1.30	150	1	115	15
5'	2	6.7	20	0.24	16	1	0.04	5	0.38	44	0.34	39	0.72	83	1.65	190	1	115	15
6'	4	6.7	20	0.48	32	2	0.08	9	0.42	49	0.26	30	0.69	79	1.96	225	1	115	15
8'	4	6.7	20	0.48	32	2	0.08	9	0.60	69	0.54	62	1.14	131	2.61	300	1	115	15
12'	6	6.7	20	0.72	48	3	0.12	14	0.90	104	0.81	93	1.71	197	3.91	450	2	115	30

OPTIONAL HIGH OUTPUT LED LIGHTS (115 VOLT)

CASE LENGTH	CANOPY LIGHTS H.O. LED		OPTIONAL SHELF		MAX. H.O. LED LOAD	
	AMPS	WATTS	AMPS	WATTS	AMPS	WATTS
4'	0.39	45	0.40	46	0.79	91
5'	N/A	N/A	N/A	N/A	N/A	N/A
6'	N/A	N/A	N/A	N/A	N/A	N/A
8'	0.78	90	0.79	91	1.57	181
12'	1.17	135	1.19	137	2.36	272