



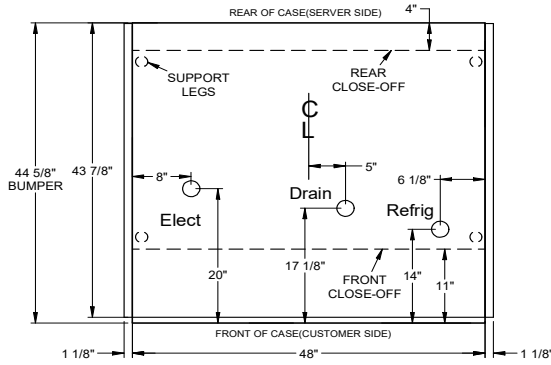
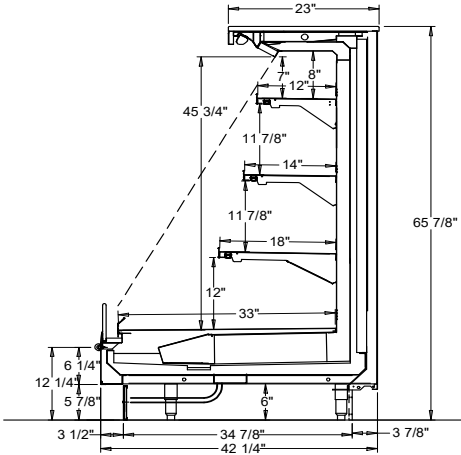
SELF-SERVICE DELI
HUSSMANN - Q5-SSEC-4R-BEV (CHINO)

REVISION DATE

01/31/24



Hussmann refrigerated merchandisers configured for sale for use in the United States meet or surpass the requirements of the DOE 2017 energy efficiency standards.



REFRIGERATION DATA:

CASE LENGTHS/ WEDGES	CASE USAGE	CAPACITY (BTU/HR/FT) (TOTAL FOR WEDGES)***		TEMPERATURE (°F)			VELOCITY (FT/MIN)
		RATING CONDITION		EVAPORATOR		DISCHARGE AIR ** (°F)	
		NSF 7	AHRI 1200	NSF 7	AHRI	NSF 7	
4'	Beverage	1050	1050	26	26	34-36	100-150

CASE LENGTHS	EST. REFG. CHRG. R404A (LBS)	20°F GLYCOL 6° RISE	
		GPM	PSI
4'	0.7	1.8	5.3

**FRONT DISCHARGE AIR MEASURED INSIDE AIR CURTAIN HONEYCOMB

***REFRIGERATION NOTES:

- 1) BTU'S INCLUDE CANOPY LIGHTS. ADD 10 BTUS/SHELF/FT FOR EACH SHELF (LIGHT)
- 2) IF WEDGES ARE IN LINEUP, STRAIGHT CASES IN LINEUP SHOULD BE SET TO 20°F EVAP
- 3) IF STRAIGHT CASES ARE SET TO 20°F EVAP, ADD 20 BTU/HR/FT TO CAPACITY AND REDUCE DA BY 2°F
- 4) AHRI 1200 RATING POINT FOR ENERGY CONSUMPTION COMPARISON ONLY
- 5) USE DEW POINT FOR HIGH GLIDE REFRIGERANTS. CARE SHOULD BE TAKEN TO USE THE DEW POINT IN P/T TABLES FOR MEASURING AND ADJUSTING SUPERHEAT. ADJUST EVAPORATOR PRESSURE AS NEEDED TO MAINTAIN THE DISCHARGE AIR TEMPERATURE SHOWN.
- 6) RATING CONDITION IS NSF TYPE I, 75°F / 55% RELATIVE HUMIDITY

REFRIGERATION DATA CONTINUED:

ELEC. THERMOSTAT / AIR SENSOR SETTINGS			DEFROST TYPE	TIME (MIN)	DEFROST FREQUENCY (#/DAY)	TERM TEMP (°F) COIL ONLY	DRIP TIME	DEFROST WATER (LBS/DAY/FT)
USAGE	CUT IN (°F)	CUT OUT (°F)						
Beverage	35	32	OFF TIME	20	12	48	N/A	TBD

END PANEL WIDTH KEY		
# OF END PNLS	END PNL WIDTH (IN.)	TOTAL ADDED LENGTH (IN.)
1	1.125	1.125
2	1.125	2.25

ELECTRICAL DATA: STANDARD FANS, HEATERS, LED LIGHTS (115 VOLT)

CASE LENGTH	EVAPORATOR FANS					CANOPY LIGHTS LED		OPTIONAL LED SHELF LIGHTS		MAX. LED LOAD (W/ ALL OPTIONS)		ANTI-SWEAT HEATERS		CONVENIENCE OUTLETS (OPTIONAL)		
	# OF EVAP FANS	BLADE DIA. (IN.)	BLADE PITCH (°)	AMPS	WATTS	AMPS	WATTS	AMPS	WATTS	AMPS	WATTS	AMPS	WATTS	# OUTLET S	VOLTS	AMPS
4'	2	6.7	25	0.6	48	0.2	27	0.2	21	0.4	48	N/A	N/A	N/A	N/A	N/A