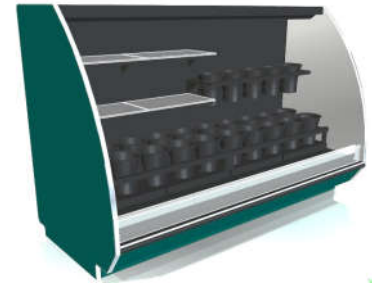
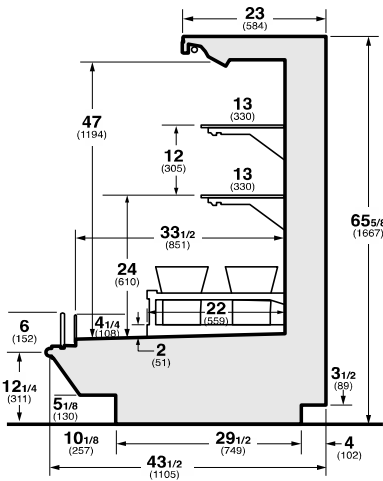




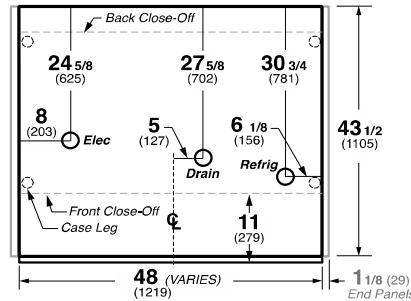
Hussmann refrigerated merchandisers configured for sale for use in the United States meet or surpass the requirements of the DOE 2017 energy efficiency standards.



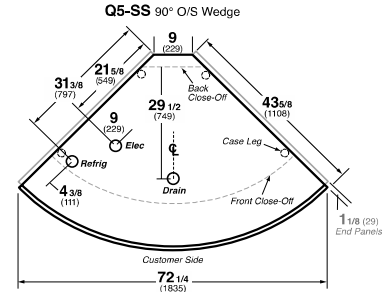
Q5-SSEC-F Floral Self Service Multi-deck



Q5-SS Multi-Deck Self-Service



Notes:
Contact your sales representative for information on possible availability of additional case lengths.



REFRIGERATION DATA:

CASE LENGTHS/ WEDGES	CASE USAGE*	CAPACITY (BTU/HR/FT) (TOTAL FOR WEDGES)**		TEMPERATURE (°F)			VELOCITY (FT/MIN)
		RATING CONDITION		EVAPORATOR		DISCHARGE AIR	
		NSF 7	AHRI	NSF 7	AHRI	** (°F)	
4',6',8',12'	FLORAL	1200	1200	30	30	34~36	100~150
90° OS	FLORAL	4950	4950	30	30	34~36	75~100

CASE LENGTHS	EST. REFG. CHR.G. R404A (LBS)	20°F GLYCOL 6° RISE	
		GPM	PSI
4'	0.7	1.7	4.8
6'	0.8	2.5	5.6
8'	1.1	3.3	3.2
12'	1.4	4.7	4.9
90° OS	0.4	1.8	4.2

*APPROVED FOR NON-CRITICAL TEMP FLORAL ONLY.

**FRONT DISCHARGE AIR MEASURED INSIDE AIR CURTAIN HONEYCOMB

***REFRIGERATION NOTES:

- 1) BTU'S DO NOT INCLUDE LIGHTS. ADD 10 BTUS/SHELF/FT FOR OPTIONAL LED LIGHTS.
- 2) AHRI 1200 RATING POINT FOR ENERGY CONSUMPTION COMPARISON ONLY.
- 3) USE DEW POINT FOR HIGH GLIDE REFRIGERANTS. CARE SHOULD BE TAKEN TO USE THE DEW POINT IN P/T TABLES FOR MEASURING AND ADJUSTING SUPERHEAT. ADJUST EVAPORATOR PRESSURE AS NEEDED TO MAINTAIN THE DISCHARGE AIR TEMPERATURE SHOWN.
- 4) RATING CONDITION IS NSF TYPE I, 75°F / 55% RELATIVE HUMIDITY.

REFRIGERATION DATA CONTINUED:

ELEC. THERMOSTAT / AIR SENSOR SETTINGS			DEFROST TYPE	TIME (MIN)	DEFROST FREQUENCY (#/DAY)	TERM TEMP (°F) COIL ONLY	DRIP TIME	DEFROST WATER (LBS/DAY/FT)
USAGE	CUT IN (°F)	CUT OUT (°F)						
FLORAL	35	32	OFF TIME	20	6	48	N/A	1.9

END PANEL WIDTH KEY		
# OF END PNLS	END PNL WIDTH (IN.)	TOTAL ADDED LENGTH (IN.)
1	1.125	1.125
2	1.125	2.25

ELECTRICAL DATA: STANDARD FANS, HEATERS, LED LIGHTS (115 VOLT)

CASE LENGTH	EVAPORATOR FANS					CANOPY LIGHTS LED		OPTIONAL LED SHELF LIGHTS		MAX. LED LOAD (W/ ALL OPTIONS)		ANTI-SWEAT HEATERS		CONVENIENCE OUTLETS (OPTIONAL)		
	# OF EVAP FANS	BLADE DIA. (IN.)	BLADE PITCH (°)	AMPS	WATTS	AMPS	WATTS	AMPS	WATTS	AMPS	WATTS	AMPS	WATTS	# OUTLETS	VOLTS	AMPS
4'	2	6.7	25	0.6	48	0.2	27	0.2	21	0.4	48	N/A	N/A	N/A	N/A	N/A
6'	4	6.7	25	1.2	96	0.3	39	0.3	31	0.6	69	N/A	N/A	N/A	N/A	N/A
8'	4	6.7	25	1.2	96	0.5	54	0.4	41	0.8	95	N/A	N/A	N/A	N/A	N/A
12'	6	6.7	25	1.7	144	0.7	81	0.5	62	1.2	143	N/A	N/A	N/A	N/A	N/A
90° OS	2	6.7	30	0.6	48	0.1	16	0.1	17	0.3	33	N/A	N/A	N/A	N/A	N/A

OPTIONAL HIGH OUTPUT LED LIGHTS (115 VOLT)

CASE LENGTH	CANOPY LIGHTS H.O. LED		OPTIONAL SHELF		MAX. H.O. LED LOAD	
	AMPS	WATTS	AMPS	WATTS	AMPS	WATTS
4'	0.3	32	0.3	30	0.5	62
6'	0.4	47	0.5	52	0.9	99
8'	0.6	64	0.5	61	1.1	125
12'	0.8	96	0.8	91	1.6	187
90° OS	N/A	N/A	N/A	N/A	N/A	N/A