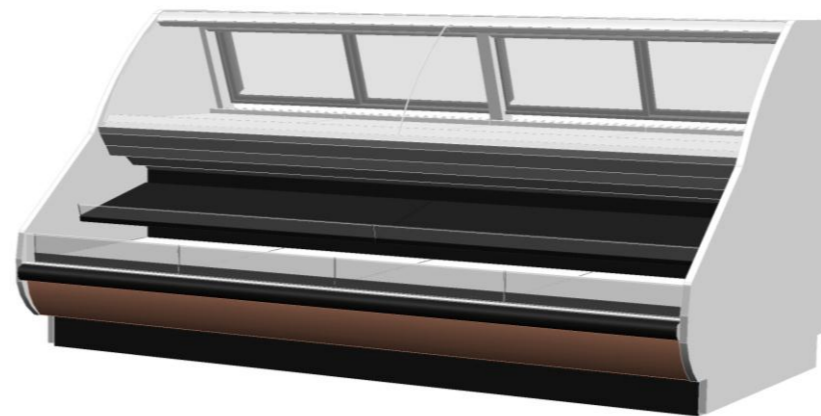




**DELI SERVICE - SELF SERVICE**  
**HUSSMANN - R3D-31/CR3D-31 (CHINO)**



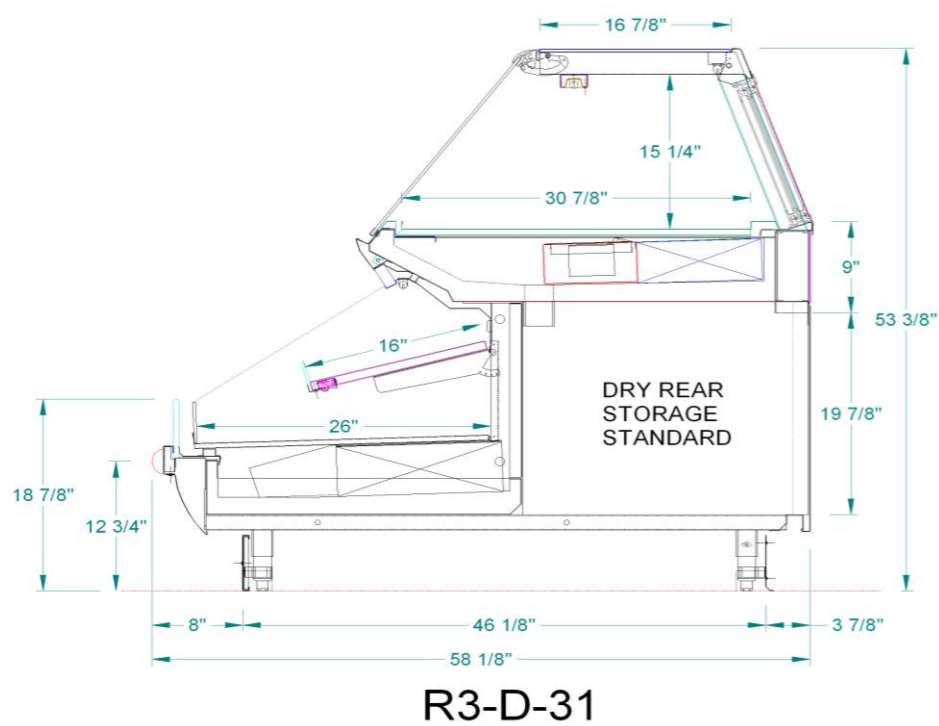
Hussmann refrigerated merchandisers configured for sale for use in the United States meet or surpass the requirements of the DOE 2012 energy efficiency standards.



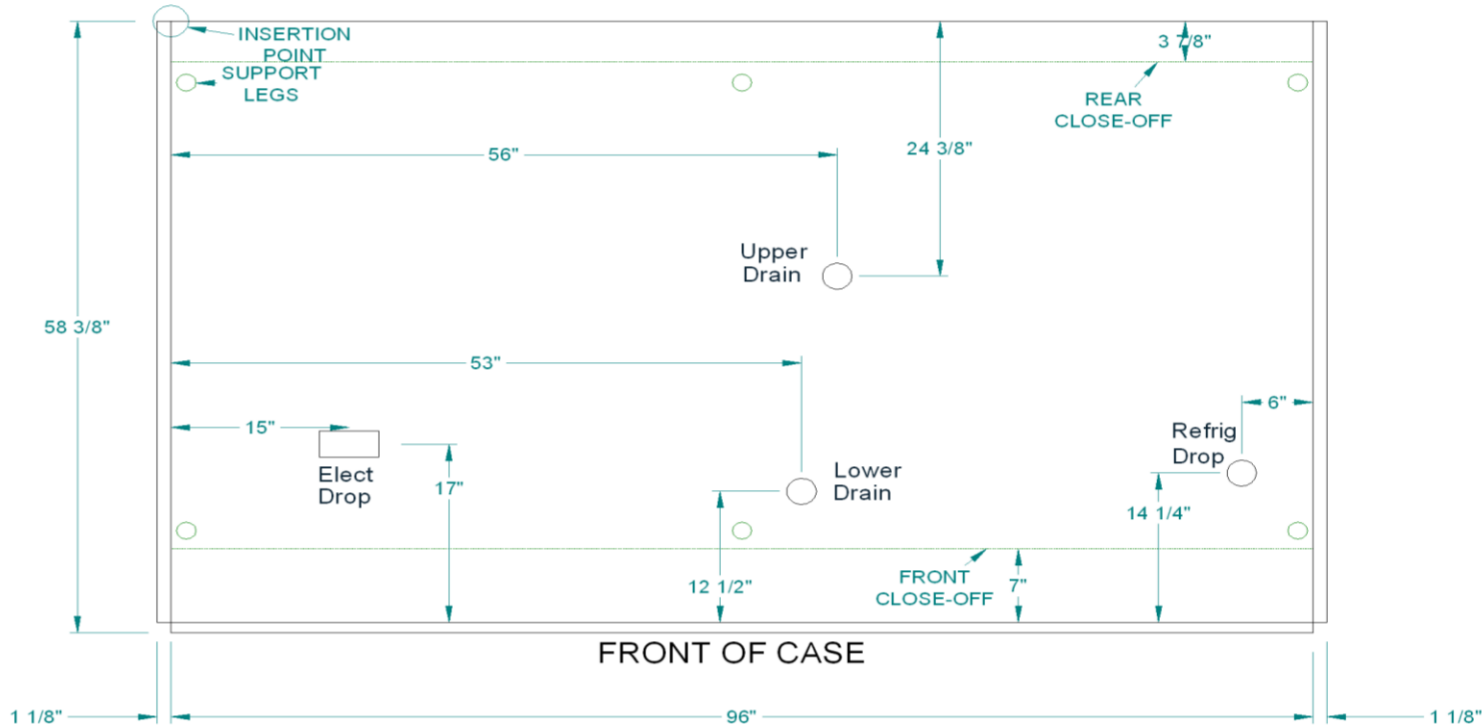
PHOTO

SECTION

PLAN



R3-D-31



**REFRIGERATION DATA:**

CASE LENGTH	CASE USAGE	*** CAPACITY (BTU/HR TOTAL)		TEMPERATURE (°F)						VELOCITY (FT/MIN)	EST. REFG. CHRGE. (LBS)	GLYCOL TOP REQUIREMENTS		GLYCOL FRONT REQUIREMENTS	
				EVAPORATOR		UNIT SIZING*		DISCHARGE AIR				GPM	PSI	GPM	PSI
				PAR	CONV	PAR	CONV	PAR	CONV			PAR	CONV	GPM	PSI
4'	DELI	4200	4830	20 TOP/ 20 FRONT	20 TOP/ 20 FRONT	18	18	24	24	200/250	1.1	0.4	0.4	1.1	5.7
5'	DELI	5250	6038	20 TOP/ 20 FRONT	20 TOP/ 20 FRONT	18	18	24	24	200/250	1.3	TBD	TBD	TBD	TBD
6'	DELI	6300	7245	20 TOP/ 20 FRONT	20 TOP/ 20 FRONT	18	18	24	24	200/250	1.5	0.5	1.3	1.6	3.6
8'	DELI	8400	9660	20 TOP/ 20 FRONT	20 TOP/ 20 FRONT	18	18	24	24	200/250	2.2	0.7	2.4	2.1	6.4
10'	DELI	10500	12075	20 TOP/ 20 FRONT	20 TOP/ 20 FRONT	18	18	24	24	200/250	2.7	0.9	3.9	TBD	TBD
12'	DELI	12600	14490	20 TOP/ 20 FRONT	20 TOP/ 20 FRONT	18	18	24	24	200/250	3	1.1	5.7	3.2	7

**END PANEL WIDTH KEY**

# OF END PNLS	END PNL WIDTH (IN.)	TOTAL ADDED LENGTH (IN.)
1	1.125	1.125
2	1.125	2.25

**LEGEND**

PAR- PARALLEL  
 CONV- CONVENTIONAL  
 N/A - NOT AVAILABLE  
 TBD - TO BE DETERMINED  
 A/S- AIRSWEEP

\*2° F less than evaporator for pressure loss in refrigerant lines

**REFRIGERATION DATA CONTINUED:**

ELEC. THERMOSTAT / AIR SENSOR SETTINGS			EPR SETTINGS			CONVEN. COMPRESS. SETTINGS					
USAGE	CUT IN (°F)	CUT OUT (°F)	R22 (PSIG)	R404A (PSIG)	R407A (PSIG)	R22		R404A		R407A	
						CUT IN (PSI)	CUT OUT (PSI)	CUT IN (PSI)	CUT OUT (PSI)	CUT IN (PSI)	CUT OUT (PSI)
DELI	+26	+22	40	53	N/A	40	10	40	10	40	10

**\*\*\* REFRIGERATION NOTES:**

- 1) BTU'S INCLUDE 2 ROWS (1 TOP; 1 FRONT) FLOURESCENT CANOPY LIGHTS BUT NO SHELF LIGHTS
- 2) ADD 10 BTU'S PER FOOT/PER SHELF FOR OPTIONAL LED SHELF LIGHTS
- 3) DEDUCT 10 BTU'S PER FOOT/PER ROW FOR OPTIONAL LED CANOPY LIGHTS

**ELECTRICAL DATA:**

STANDARD FANS AND HEATERS (120 VOLT)

CASE LENGTH	# OF FANS PER CASE	** TOTAL EVAPORATOR FANS		DRAIN PAN HEATERS		CANOPY LIGHTS LED TOP & FRONT		SHELF LIGHTS (OPTIONAL) LED			NOSE LIGHTS		LEDGE LIGHTS (OPTIONAL)		TOTAL LIGHTS LED TOP & FRONT W/SHELVES		ANTI-SWEAT HEATERS (On Evap. Fan Circuit)			
		AMPS	WATTS	AMPS	WATTS	AMPS	WATTS	# SHLVS	AMPS	WATTS	AMPS	WATTS	AMPS	WATTS	AMPS	WATTS	AMPS	WATTS	AMPS	WATTS
		4'	4	0.48	28	N/A	N/A	0.22	24	1	0.11	12	N/A	N/A	N/A	N/A	0.44	48	0.26	30
5'	4	0.48	28	N/A	N/A	0.28	30	1	0.14	15	N/A	N/A	N/A	N/A	0.56	60	0.26	30	1.58	190
6'	6	0.72	42	N/A	N/A	0.33	36	1	0.17	18	N/A	N/A	N/A	N/A	0.66	72	0.52	60	1.88	225
8'	8	0.96	56	N/A	N/A	0.44	48	1	0.22	24	N/A	N/A	N/A	N/A	0.88	96	0.52	60	2.5	300
10'	8	0.96	56	N/A	N/A	0.55	60	1	0.27	30	N/A	N/A	N/A	N/A	1.1	120	0.52	60	3.13	375
12'	12	1.44	84	N/A	N/A	0.67	72	1	0.33	36	N/A	N/A	N/A	N/A	1.34	144	0.78	90	3.75	450

**ELECTRICAL DATA CONTINUED:**

CASE LENGTH	CONDENSING UNIT 208V 1 PHASE		CONVENIENCE OUTLETS (Optional)		
	AMPS	WATTS	# OUTLETS	VOLTS	AMPS
4'	N/A	N/A	1	115	15
5'	N/A	N/A	1	115	15
6'	N/A	N/A	1	115	15
8'	N/A	N/A	1	115	15
10'	N/A	N/A	1	115	15
12'	N/A	N/A	2	115	30

**DEFROST DATA:**

CASE LENGTH	DEFROST TYPE	TIME (MIN.)	TERM. TEMP (°F) COIL ONLY	DRIP TIME (MIN.)	DEFROST PER DAY	ELECTRICAL DEFROST 208V 1 PHASE		DEFROST WATER (LB/DAY)	
						AMPS	WATTS	TBD	TBD
4'	OFF TIME	40	54	TBD	4	N/A	N/A	TBD	TBD
5'	OFF TIME	40	54	TBD	4	N/A	N/A	TBD	TBD
6'	OFF TIME	40	54	TBD	4	N/A	N/A	TBD	TBD
8'	OFF TIME	40	54	TBD	4	N/A	N/A	TBD	TBD
10'	OFF TIME	40	54	TBD	4	N/A	N/A	TBD	TBD
12'	OFF TIME	40	54	TBD	4	N/A	N/A	TBD	TBD

**OPTIONS/NOTES:**

- 1) GFCI receptacles are optional and are furnished with case when ordered
- 2) Metallic in-use cover shipped loose - installed in field
- 3) Mechanical Specs for CR3D are equal to R3D for equal case length