



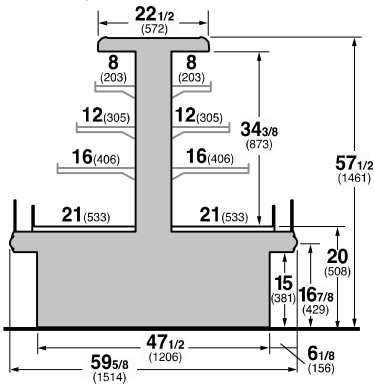
SELF-SERVICE DELI CHEESE
HUSSMANN - TY4-5 I-ISLAND (CHINO)

REVISION DATE 6/20/2018

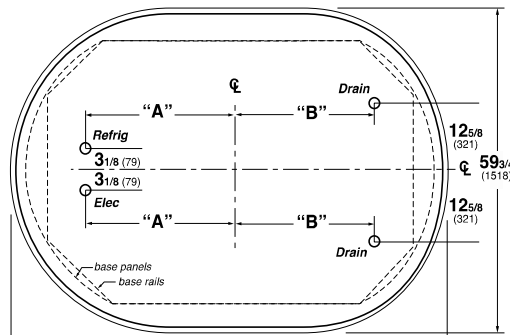


Hussmann refrigerated merchandisers configured for sale for use in the United States meet or surpass the requirements of the DOE 2017 energy efficiency standards.

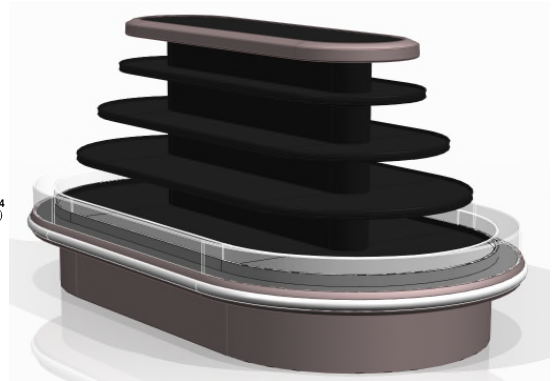
TY4-5 Entyce 4 level 5' wide island



TY-5 5' wide Island Merchandiser



	83 5/8 (2124)	107 5/8 (2734)	131 5/8 (3343)	155 5/8 (3953)	179 5/8 (4562)	203 5/8 (5172)
"A"	27 5/8 (702)	39 5/8 (1006)	51 5/8 (1311)	63 5/8 (1616)	75 5/8 (1921)	87 5/8 (2226)
"B"	27 5/8 (702)	39 5/8 (1006)	consult CADblock at hussmann.com			



REFRIGERATION DATA:

CASE LENGTHS	CASE USAGE	CAPACITY *** (BTU/HR) RATING CONDITION		TEMPERATURE (°F)			VELOCITY (FT/MIN)
		NSF 7	AHRI 1200	EVAPORATOR		DISCHARGE AIR ** (°F)	
				NSF 7	AHRI 1200	NSF 7	
71	DELI /	13660	13660	22	22	28-30	100-150
91	DELI /	17500	17500	22	22	28-30	100-150
111	DELI /	21340	21340	22	22	28-30	100-150
131	DELI /	25180	25180	22	22	28-30	100-150
151	DELI /	29000	29000	22	22	28-30	100-150
171	DELI /	32850	32850	22	22	28-30	100-150

CASE LENGTHS	EST. REFRG. CHR.G. 404A (LBS)	GLYCOL (20°F INLET, 6° RISE)	
		GPM	PSI
71	1.1	4.8	6.8
91	1.3	6.2	4.9
111	1.8	7.4	6.7
131	2.2	8.7	8.7
151	2.7	9.8	6.1
171	3.1	11.0	7.0

**FRONT DISCHARGE AIR MEASURED INSIDE AIR CURTAIN HONEYCOMB
 ***REFRIGERATION NOTES:

- 1) BTU'S SHOWN ARE WITHOUT LIGHTS.
- 2) ADD 10 BTU'S PER FOOT OF LED LIGHTS PER LIGHT MATRIX BELOW.
- 3) AHRI 1200 RATING POINT FOR ENERGY CONSUMPTION COMPARISON ONLY.
- 4) USE DEW POINT FOR HIGH GLIDE REFRIGERANTS. CARE SHOULD BE TAKEN TO USE THE DEW POINT IN P/T TABLES FOR MEASURING AND ADJUSTING SUPERHEAT. ADJUST EVAPORATOR PRESSURE AS NEEDED TO MAINTAIN THE DISCHARGE AIR TEMPERATURE SHOWN.
- 5) RATING CONDITION IS NSF TYPE I, 75°F/55% RH.

REFRIGERATION DATA CONTINUED:

ELEC. THERMOSTAT / AIR SENSOR SETTINGS			DEFROST TYPE	TIME (MIN)	DEFROST FREQUENCY (#/DAY)	TERM. TEMP (°F) COIL ONLY	DRIP TIME	DEFROST WATER (LBS/DAY/FT)
USAGE	CUT IN (°F)	CUT OUT (°F)						
DELI / CHEESE	31	28	OFF TIME	16	12	52	N/A	12

END PANEL WIDTH KEY		
# OF END PNLS	END PNL WIDTH (IN.)	TOTAL ADDED LENGTH (IN.)
1	1.125	1.125
2	1.125	2.25

ELECTRICAL DATA:

STANDARD FANS, HEATERS, LED LIGHTS (115 VOLT)

CASE LENGTH	EVAPORATOR FANS					CANOPY LIGHTS LED		OPTIONAL LED SHELF LIGHTS		MAX. LED LOAD (W/ ALL OPTIONS)		ANTI-SWEAT HEATERS (ON FAN CIRCUIT)		CONVENIENCE OUTLETS (OPTIONAL)			LIGHT MATRIX FT OF LED
	# OF EVAP FANS	BLADE DIA. (IN.)	BLADE PITCH (°)	AMPS	WATTS	AMPS	WATTS	AMPS	WATTS	AMPS	WATTS	AMPS	WATTS	# OUTLETS	VOLTS	AMPS	
71	6	8	20	1.8	48	0.12	14	0.57	66	0.70	80	0.43	50	1	115	15	34
91	8	8	20	2.4	64	0.22	25	0.85	98	1.07	123	0.61	70	1	115	15	50
111	10	8	20	3	80	0.30	35	1.11	128	1.41	162	0.78	90	1	115	15	66
131	12	8	15	3.6	96	0.40	46	1.39	160	1.79	205	0.96	110	1	115	15	82
151	14	8	15	4.2	112	0.49	56	1.67	192	2.16	249	1.04	120	1	115	15	98
171	16	8	15	4.8	128	0.57	65	1.90	219	2.47	284	1.22	140	1	115	15	114

OPTIONAL HIGH OUTPUT LED LIGHTS (115 VOLT)

CASE LENGTH	CANOPY LIGHTS H.O. LED		OPTIONAL SHELF		MAX. H.O. LED LOAD	
	AMPS	WATTS	AMPS	WATTS	AMPS	WATTS
71	N/A	N/A	N/A	N/A	N/A	N/A
91	N/A	N/A	N/A	N/A	N/A	N/A
111	N/A	N/A	N/A	N/A	N/A	N/A
131	N/A	N/A	N/A	N/A	N/A	N/A
151	N/A	N/A	N/A	N/A	N/A	N/A
171	N/A	N/A	N/A	N/A	N/A	N/A