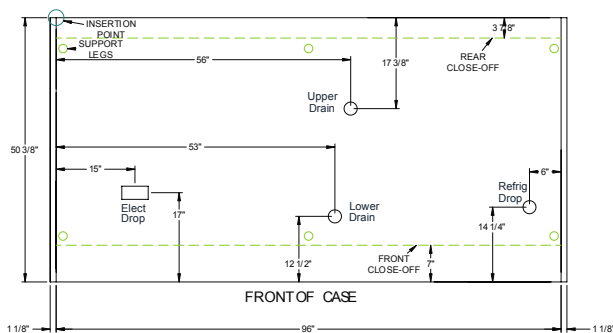
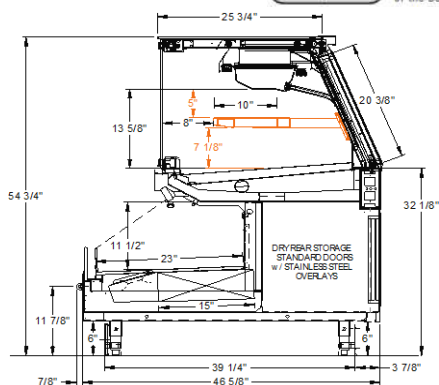




Hussmann refrigerated merchandisers configured for sale for use in the United States meet or surpass the requirements of the DOE 2017 energy efficiency standards.



REFRIGERATION DATA:

CASE LENGTHS	CASE USAGE	CAPACITY TOP/FRONT*** (BTU/HR/FT)		TEMPERATURE (°F)			VELOCITY TOP/FRONT (FT/MIN)
		RATING CONDITION		EVAPORATOR TOP/FRONT		DISCHARGE AIR TOP/FRONT **	
		NSF 7	AHRI 1200	NSF 7	AHRI 1200	NSF 7	NSF 7
4', 6', 8', 10', 12'	MEAT/FISH	230/450	230/450	26/26	26/26	33~36/33~36	50~100/150~200
REAR STORAGE	MEAT/FISH	90	90	26	26	33~35	380~600
4', 6', 8', 10', 12'	M/F w/SHELF	250/450	250/450	20/26*	20/26*	24~29/30~32	50~100/150~200
REAR STORAGE	M/F w/SHELF	90	90	26*	26*	33~35	380~600

CASE LENGTH	EST. REFG. CHR.G. 404A (LBS)	20°F GLYCOL 6° RISE					
		FRONT		TOP		REAR STORAGE	
		GPM	PSI	GPM	PSI	GPM	PSI
4'	1.8	0.7	1.5	0.4	0.3	0.1	0.0
6'	2.6	1.0	3.7	0.5	1.4	0.2	0.1
8'	3.5	1.3	1.7	0.7	0.4	0.2	0.3
10'	4.1	1.6	2.9	1.0	1.5	0.3	0.5
12'	5.2	1.9	3.5	1.0	1.4	0.4	0.7

*EPR REQUIRED FOR FRONT SECTION WHEN SHELF IS USED
 **FRONT DISCHARGE AIR MEASURED INSIDE AIR CURTAIN HONEYCOMB
 ***REFRIGERATION NOTES:

- 1) BTU'S DO NOT INCLUDE LIGHTS
- 2) ADD 10 BTU'S PER FOOT/PER SHELF FOR OPTIONAL LED SHELF LIGHTS
- 3) 2H OPTION; ADD 45 BTU/HR/FT FOR THE FRONT, ADD 5 BTU/HR/FT FOR THE REAR STORAGE.
- 4) 4H OPTION; ADD 80 BTU/HR/FT FOR THE FRONT, ADD 10 BTU/HR/FT FOR THE REAR STORAGE.
- 6) AHRI 1200 RATING POINT FOR ENERGY CONSUMPTION COMPARISON ONLY
- 7) USE DEW POINT FOR HIGH GLIDE REFRIGERANTS. CARE SHOULD BE TAKEN TO USE THE DEW POINT IN P/T TABLES FOR MEASURING AND ADJUSTING SUPERHEAT. ADJUST EVAPORATOR PRESSURE AS NEEDED TO MAINTAIN THE DISCHARGE AIR TEMPERATURE SHOWN.
- 8) RATING CONDITION IS NSF TYPE I, 75°F/55% RH
- 9) SHELF CASE GRAV COIL SUPERHEAT TYPICALLY 2°F, ALSO INCREASE DEFROST SCHEDULE ~1-2 MINUTES PER 1°F AMBIENT BELOW 75°F

REFRIGERATION DATA CONTINUED:

ELEC. THERMOSTAT / AIR SENSOR SETTINGS		DEFROST TYPE	TIME (MIN)	DEFROST FREQUENCY (#/DAY)	TERM. TEMP (°F) COIL ONLY	DRIP TIME	DEFROST WATER (LBS/DAY/FT)		
USAGE	CUT IN (°F) / CUT OUT (°F)								
TOP GRAV	33 / 32	OFF TIME	30	4	45	N/A	0.6		
TOP DECK	28 / 27				N/A	N/A			
FRONT	28 / 26				48	N/A		2.4	
REAR STORAGE	37 / 36	OFF TIME	45	4	45	N/A	0.2		
WITH SHELF = S									
S / TOP GRAV	27 / 25				43	N/A	1.0		
S / TOP DECK	33 / 32				N/A	N/A			
S / FRONT	28 / 26				48	N/A		2.6	
S / REAR STOR	37 / 36	45	N/A	0.2					

END PANEL WIDTH KEY		
# OF END PNLS	END PNL WIDTH (IN.)	TOTAL ADDED LENGTH (IN.)
1	1.125	1.125
2	1.125	2.25

ELECTRICAL DATA:

STANDARD FANS, HEATERS, LED LIGHTS (115 VOLT)

CASE LENGTH	EVAPORATOR FANS: TOP AND FRONT					CANOPY LIGHTS LED TOP AND FRONT		OPTIONAL LED SHELF LIGHTS TOP AND FRONT		MAX. LED LOAD (W/ ALL OPTIONS)		ANTI-SWEAT HEATERS		CONVENIENCE OUTLETS (OPTIONAL)		
	# OF EVAP FANS	BLADE DIA. (IN.)	BLADE PITCH FRONT (°)	AMPS	WATTS	AMPS	WATTS	AMPS	WATTS	AMPS	WATTS	AMPS	WATTS	# OUTLETS	VOLTS	AMPS
4'	3	6.70	15	0.4	24	0.3	31	0.1	10	0.4	41	0.9	100	1	115	15
6'	6	6.70	15	0.7	48	0.4	46	0.1	15	0.5	61	1.3	150	1	115	15
8'	6	6.70	15	0.7	48	0.5	62	0.2	21	0.7	82	1.7	200	1	115	15
10'	6	6.70	15	0.7	48	0.6	73	0.2	26	0.9	99	2.2	250	1	115	15
12'	9	6.70	15	1.1	72	0.8	93	0.3	31	1.1	124	2.6	300	2	115	30

OPTIONAL HIGH OUTPUT LED LIGHTS (115 VOLT)

CASE LENGTH	CANOPY LIGHTS H.O. LED TOP AND FRONT		OPTIONAL SHELF TOP AND FRONT		MAX. H.O. LED LOAD	
	AMPS	WATTS	AMPS	WATTS	AMPS	WATTS
4'	0.3	33	0.2	26	0.5	59
6'	N/A	N/A	N/A	N/A	N/A	N/A
8'	0.6	66	0.4	51	1.0	117
10'	N/A	N/A	N/A	N/A	N/A	N/A
12'	0.9	100	0.7	77	1.5	176

CASE LENGTH	EVAPORATOR FANS: REFRIGERATED REAR STORAGE (OPTIONAL)				
	# OF EVAP FANS	BLADE DIA. (IN.)	BLADE PITCH (°)	AMPS	WATTS
4'	1	6.70	30	0.3	8.8
6'	1	6.70	30	0.3	8.8
8'	1	6.70	30	0.3	8.8
10'	1	6.70	30	0.3	8.8
12'	1	6.70	30	0.3	8.8