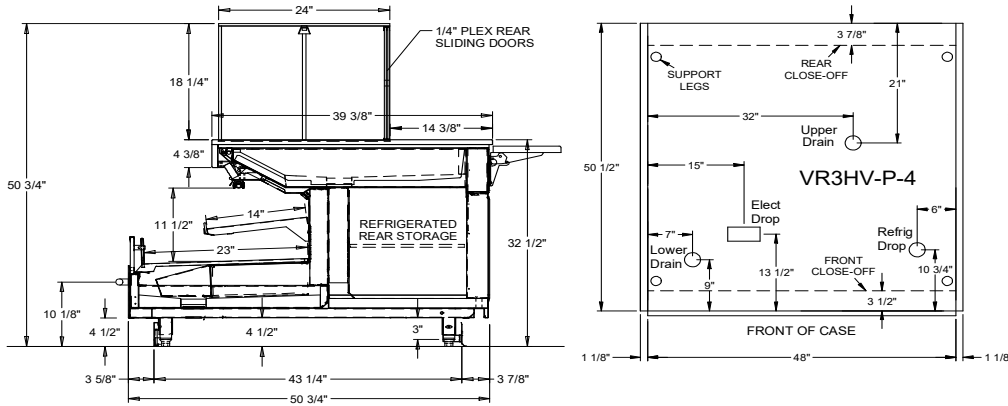




Hussmann refrigerated merchandisers configured for sale for use in the United States meet or surpass the requirements of the DOE 2017 energy efficiency standards.



**REFRIGERATION DATA:**

CASE LENGTHS	CASE USAGE	CAPACITY TOP/FRONT*** (BTU/HR/FT) (TOTAL FOR WEDEGES) RATING CONDITION		TEMPERATURE (°F)			VELOCITY TOP/FRONT (FT/MIN)
		NSF 7		AHRI 1200		DISCHARGE AIR TOP/FRONT** (°F)	
		NSF 7	AHRI 1200	NSF 7	AHRI 1200		
4', 6', 8', 12'	DELI	250/480	250/480	20/26	20/26	28~30/30~32	50~100/150~200
REAR STORAGE	DELI	90	90	26	26	32~34	600~725
45° IS	DELI	480	480	26	26	28~30/30~32	50~100/150~200

CASE LENGTHS	EST. REFG. CHR.G. 404A (LBS)	20°F GLYCOL 6° RISE					
		TOP		FRONT		REAR STORAGE	
		GPM	PSI	GPM	PSI	GPM	PSI
4'	1.2	0.4	7.7	0.7	2.8	0.1	0.0
6'	1.6	0.5	3.9	1.0	1.7	0.2	0.0
8'	2.1	0.7	7.5	1.4	3.1	0.2	0.3
12'	3.2	1.0	7.5	2.0	3.5	0.4	0.7

\*EPR REQUIRED FOR FRONT SECTION

\*\*FRONT DISCHARGE AIR MEASURED INSIDE AIR CURTAIN HONEYCOMB

\*\*\*REFRIGERATION NOTES:

- 1) BTU'S DO NOT INCLUDE LIGHTS. ADD 10 BTU'S PER FOOT, PER SHELF FOR OPTIONAL LED SHELF LIGHT.
- 2) 2H OPTION: ADD 45 BTU/HR/FT FOR THE FRONT, ADD 5 BTU/HR/FT FOR THE REAR STORAGE.
- 3) 4H OPTION: ADD 80 BTU/HR/FT FOR THE FRONT, ADD 10 BTU/HR/FT FOR THE REAR STORAGE.
- 4) AHRI 1200 RATING POINT FOR ENERGY CONSUMPTION COMPARISON ONLY
- 5) USE DEW POINT FOR HIGH GLIDE REFRIGERANTS. CARE SHOULD BE TAKEN TO USE THE DEW POINT IN P/T TABLES FOR MEASURING AND ADJUSTING SUPERHEAT. ADJUST EVAPORATOR PRESSURE AS NEEDED TO MAINTAIN THE DISCHARGE AIR TEMPERATURE SHOWN.
- 6) RATING CONDITION IS NSF TYPE I, 75°F/55% RH

**REFRIGERATION DATA CONTINUED:**

ELEC. THERMOSTAT / AIR SENSOR SETTINGS			DEFROST TYPE	TIME (MIN)	DEFROST FREQUENCY (#/DAY)	TERM. TEMP (°F) COIL ONLY	DRIP TIME	DEFROST WATER (LBS/DAY/FT)
USAGE	CUT IN (°F)	CUT OUT (°F)						
TOP	29	26	OFF TIME	30	4	45	N/A	0.3
FRONT	31	28						
REAR STORAGE	37	36						
45° IS	31	28						

END PANEL WIDTH KEY		
# OF END PNL'S	END PNL WIDTH (IN.)	TOTAL ADDED LENGTH (IN.)
1	1.125	1.125
2	1.125	2.25

**ELECTRICAL DATA:**

**STANDARD FANS, HEATERS, LED LIGHTS (115 VOLT)**

CASE LENGTH	TOTAL EVAPORATOR FANS FRONT AND TOP				CANOPY LIGHTS LED FRONT		OPTIONAL LED SHELF LIGHTS FRONT		MAX. LED LOAD (W/ ALL OPTIONS)		ANTI-SWEAT HEATERS		CONVENIENCE OUTLETS (OPTIONAL)			
	# OF EVAP FANS	BLADE DIA. (IN.)	BLADE PITCH FRONT (°)	AMPS	WATTS	AMPS	WATTS	AMPS	WATTS	AMPS	WATTS	AMPS	WATTS	# OUT-LETS	VOLTS	AMPS
4'	4	6.7	15	0.4	32	0.1	10	0.1	10	0.2	21	0.2	23	1	115	15
6'	8	6.7	15	0.9	64	0.1	15	0.1	15	0.3	31	0.3	34	1	115	15
8'	8	6.7	15	0.9	64	0.2	21	0.2	21	0.4	41	0.4	46	1	115	15
12'	12	6.7	15	1.3	96	0.3	31	0.3	31	0.5	62	0.6	68	2	115	30
45° IS	6	6.7	15	0.0	48	0.0	0.3	0.3	31	0.3	31	0.0	0	2	115	30

**OPTIONAL HIGH OUTPUT LED LIGHTS (115 VOLT)**

CASE LENGTH	CANOPY LIGHTS H.O. LED FRONT		OPTIONAL SHELF FRONT		MAX. H.O. LED LOAD	
	AMPS	WATTS	AMPS	WATTS	AMPS	WATTS
4'	0.1	15	0.2	26	0.4	41
6'	0.2	26	0.4	41	0.6	67
8'	0.3	30	0.4	51	0.7	81
12'	0.4	46	0.7	77	1.1	122
45° IS	0.4	46	0.7	77	1.1	122

**REFRIGERATED REAR STORAGE (OPTIONAL) EVAP. FANS**

CASE LENGTH	# OF EVAP FANS	BLADE DIA. (IN.)	BLADE PITCH (°)	AMPS	WATTS
4'	1	6.7	30	0.3	8.8
6'	1	6.7	30	0.3	8.8
8'	1	6.7	30	0.3	8.8
12'	1	6.7	30	0.3	8.8