

HUSSMANN®

SN / SM SERIES

Spot

Low Temperature Merchandisers

SN-075 SM-075
SN-090 SM-090
SN-115 SM-115
SN-140 SM-140
SN-190 SM0110

PLEASE READ THIS MANUAL BEFORE USING THE PRODUCT

Installation & Operation Manual

HUSSMANN – CORPORATION

Hussmann Monterrey, Mexico
Carretera Mexico-Laredo KM. 1009
Cienega de Flores, Nuevo Leon 65550
MEXICO
Phone: (52) 81-8318-6400
Fax: (52) 81-8318-6496

P/N 2400205 C
March, 2004

Table of Contents

SHIPPING DAMAGE

General	1-1
Apparent Loss or Damage	1-1
Concealed Loss or Damage	1-1
Location	1-1

PREPARATION OF CABINET FOR OPERATION

Removing Cabinet from Skid	2-1
Door installation (SN Models)	2-1
Operation	2-1
Load Limit	2-1

REFRIGERATION SYSTEM

Description	3-1
Defrosting Instructions	3-1

START UP / OPERATION

Electrical Supply	4-1
Temperature Control	4-1
High Pressure Switch	4-1
Draining	

MAINTENANCE

Maintenance	5-1
Cabinet Surfaces	5-1
Condenser	5-1

SHIPPING DAMAGE

General

All equipment should be thoroughly examined for shipping damage before and during unloading.

This equipment has been carefully inspected at our factory and the carrier has assumed responsibility for safe arrival. If damaged, either apparent or concealed, claim must be made to the carrier.

Apparent Loss Or Damage

If there is an obvious loss or damage, it must be noted on the freight bill or express receipt and signed by the carrier's agent; otherwise, carrier may refuse claim. The carrier will supply necessary forms.

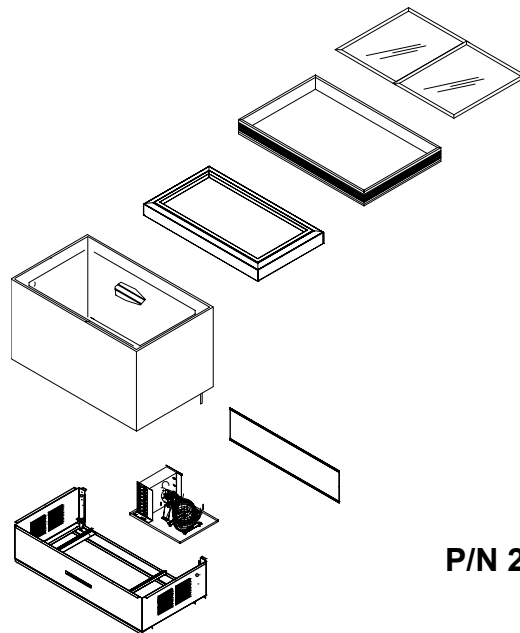
Concealed Loss Or Damage

When loss or damage is not apparent until after equipment is uncrated, a claim for concealed damage is made. Upon discovering damage, make request in writing to carrier for inspection within 15 days and retain all packing. The carrier will supply inspection report and required claim forms.

Location

The SN Models (with glass tops) are designed for indoor operation with a recommended operating room maximum ambient temperature range of 65 to 90°F (18-32°C)/50-65% rh. The SM models (open tops) are designed for indoor operation with a recommended operating room maximum ambient temperature of 75° F (24°C)/55% rh. Their performance is affected by store air currents when the doors are open. Do NOT allow air conditioning, electric fans, or open doors and windows to create air currents around these Spot Merchandisers nor should they be exposed to direct sunlight or other heat sources.

NOTE: The condensing unit draws ambient air through one side of the unit and discharges hot air out by the opposite side. In order to maintain proper refrigeration performance and compressor life, a minimum space of 4" (10 cm) must be maintained between the refrigerator and surrounding surfaces.



P/N 2400205 C

2-1

PREPARATION OF CABINET FOR OPERATION

Removing Cabinet From Skid

Move the Spot Merchandiser as close as possible to its permanent location and remove hold-down brackets at the front and rear of the cabinet. Check refrigeration lines to see that they are "free" and no damage has occurred during shipping . Check fan blades for free operation.

Door Installation (SN Models)

After the merchandiser has been placed at its final position, the doors may be installed. The doors must be positioned inside of each guide to have a good seal.

Operation

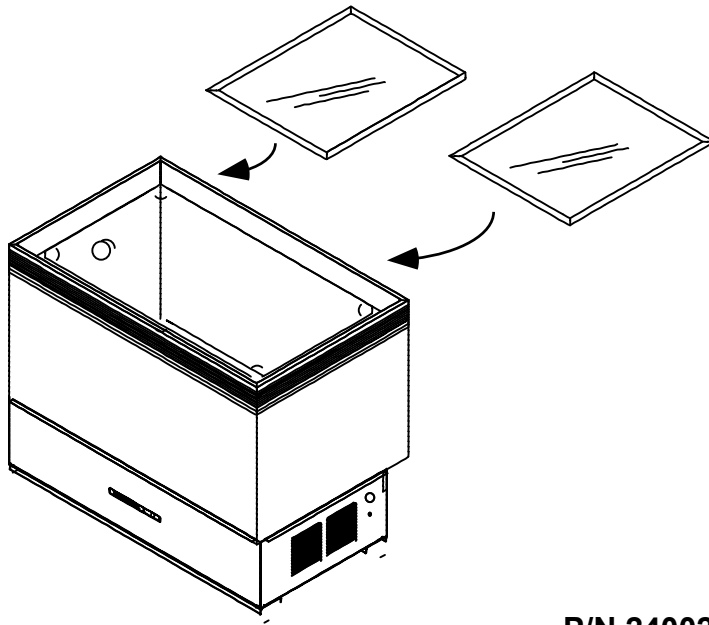
Always allow the cabinet to warm up to 65° F before starting the unit. If the cabinet has just been delivered from a cold ambient, such as winter, wait least 16 hours before starting.

Should the unit be disconnected when running, wait 5 minutes before restarting. This allows the refrigerant pressures to equalize and prevents the compressor from cycling on its overload protector.

It is advisable to run the unit for 30 to 60 minutes before loading with merchandise. This is to allow the air inside the Spot Merchandiser to cool down.

Load Limits

Each merchandiser has a load limit decal. At no time should merchandiser be stocked beyond the load limits indicated. If load limit is violated, it may result in loss of contents.



P/N 2400205 C

3-1

REFRIGERATION SYSTEM

Description

All Merchandisers are equipped with a hermetic compressor. The refrigeration system works with 404a refrigerant. It is really important not to change or mix refrigerants during service. If another refrigerant than the specified is used, the performance of the case will be affected.

The refrigerant used is CFC free. That means it does not damage the stratosphere ozone layer.

The condenser is fin and tube construction. The air is taken in at one side of the cabinet through the lower grill and discharged out by the opposite side.

Cooling is accomplished by the ambient created by the cold walls.

Defrosting Instructions

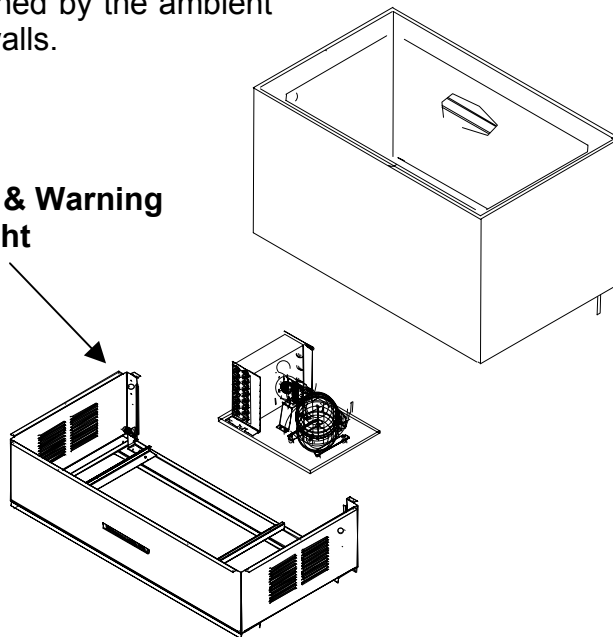
When defrosting is necessary, remove product, remove drain plug, disconnect electricity and allow frost to melt.

Do not remove frost with a pick, knife or by scraping with a sharp object.

Collect the water from defrost in a pan. DO NOT allow the water to drain on to the floor.

When the unit is finished defrosting, clean the inside as described in section 4.1, install the plug on the drain tube and connect the unit to the correct power supply.

Thermostat & Warning Light



START UP / OPERATION**Electrical Supply**

Wiring of the unit is complete when it is shipped from the factory. The unit is supplied with a three conductor electrical cord which extends from a side of the unit. Plug the unit into correct grounded outlet. It is recommended that a separate circuit be run for each cabinet to prevent the possibility of another appliance blowing a fuse, causing subsequent loss of product.

Temperature Control

An adjustable thermostat is provided for either medium or low temperature operation. The thermostat is easily reached by removing the plastic cover located on the base.

For low temperature operation, turn the screw on the thermostat clockwise. In the full clockwise position, the compressor will run 100% of the time. For medium temperature, set control screw midway between full clockwise and full counter clockwise.

The flow of room air over the top of the Spot Merchandiser should be minimized for best refrigerating results. Avoid placing your Spot Merchandiser in the direct rays of the sun or in the air stream from electric fans or open doorways.

High Pressure Switch

A high pressure limit switch is provided on all Spot Merchandiser Models. This switch is used to limit the discharge pressure of the compressor.

This switch will automatically cycle off the compressor and turn on a warning light on the base, when the discharge pressure in the system is too high.

If this condition occurs, first clean the condenser. If the warning light continues to illuminate, call service.

This pressure switch is a safety device and will not function during normal case